

From mountain to sea

# Clatt School Option Appraisal

## 1. Introduction

Aberdeenshire Council strives to allocate its resources in a way that ensures the quality of all its services. It attaches particular importance to providing the best possible educational experience for all pupils within its schools.

An update to the Aberdeenshire Learning Estate Strategy will be considered by Education and Children's Services Committee on [1 February 2024](#). The Council's strategy sets out the council's aspirations for our schools using a holistic place-based approach, which will ensure that services can be delivered in an optimum way, making the best use of available assets, whilst potentially identifying underperforming and surplus assets. The strategy also defines the ideal occupancy level of a school, which would be approximately 85%, with a target occupancy band between 75% and 90%. An excessively low level of occupancy is unlikely to be sustainable, affordable or leading to a best-value estate.

Government Guidelines within Scotland's Learning Estate Strategy "Connecting People, Places and Learning" Guiding Principle states that "Learning environments should support the wellbeing of all learners, meet varying needs to support inclusion and support transitions for all learners" and that "the Learning Estate should be well managed and maintained, making the best of existing resources, maximising occupancy and representing and delivering best value."

At its meeting on [7 October 2021](#), Education and Children's Services Committee agreed that when a primary school has eight or fewer pupils, then the Director of Education and Children's Services should consider mothballing, subject to an assessment of the school roll forecast that does not indicate that there will be sufficient in zone pupils to increase the roll above eight pupils in the next two years.

Mothballing is the temporary closure of a school which does not in itself lead to statutory consultation. This decision is taken in accordance with the Scottish Government's statutory guidance contained in the Schools (Consultation) (Scotland) Act of 2010. The Act requires that educational benefits should be at the heart of any proposal to make a significant change to schools, for current and future pupils in the area.

On [31 August 2023](#) Education and Children's Services Committee approved the preparation of an Option Appraisal on the future of Clatt School and supported community engagement as part of the Option Appraisal process to identify alternative options to consider.

## From mountain to sea

### 2. Background / Discussion

Officers regularly monitor the school rolls for all schools across Aberdeenshire to track changes to pupil numbers. In February 2022 the roll at Clatt School was six pupils and the roll was not forecast to increase in future years. Schools with a low roll prompt an assessment around the viability of the school and the educational benefits and wellbeing for the pupils. The Council was no longer able to deliver viable educational experience for the children at Clatt School.

Officers met with Ward Members to discuss the possible options for Clatt School due to the decreasing roll.

A decision to temporarily mothball Clatt School from the start of the new academic year, August 2022, was taken by the Director of Education & Children's Services in March 2022.

Meetings were held with the staff and the parents of Clatt School on 21 April 2022 to inform them of the intention to mothball the school. At that point, information was shared regarding the relocation of staff and also which schools would be made available to pupils with transport provided.

Pupils from Clatt School were offered a place at either Kennethmont School, Rhynie School or Premnay School.

The families were assured that, should mothballing continue, younger siblings who were yet to start school, would also be guaranteed a place at the school of choice.

Individual meetings with each parent/carer were held in April 2022 to discuss personal circumstances and to give support to each family.

Upon consultations with affected families and staff, all pupils were successfully placed at their chosen schools, namely: Kennethmont School and Rhynie School, and all staff were assisted with alternative arrangements.

On [1 September 2022](#) a report was presented to Education and Children's Services Committee informing the Committee of the decision that Clatt School would be mothballed from August 2022.

In May 2023, officers wrote to the residents within the Clatt School catchment area to inform them that there had been no P1 enrolments or placing request applications made for Clatt School and asked that any new families or existing families please contact Learning Estates should they wish to express an interest in returning to Clatt School. Only one family expressed an interest in their children enrolling at Clatt School for the 2023/24 school session.

## From mountain to sea

Due to there are an insufficient number of pupils wishing to return to Clatt School to make the educational experience viable, the school remained mothballed for the 2023/24 session.

On [31 August 2023](#), a report was presented to the Education and Children's Services. The Committee noted that Clatt School would be mothballed for a further academic year and approved the preparation of an option appraisal regarding the future of Clatt School.

The Primary 1 admission period for all Aberdeenshire Schools takes place in January each year. Press releases were issued to inform families that applications could be made for pupils to enrol at a school. No applications or out of zone requests to Clatt School have been received.

### **3. Community Engagement**

The Clatt community was kept informed and engaged to explore potential options for the future of Clatt School.

An online survey was made available to all residents in the Clatt School catchment and was completed by 21 respondents. The survey questions and a summary of submitted feedback have been provided in Appendix B1.

A community engagement drop-in session at Clatt Village Hall was held on 4 October 2023. All residents within the Clatt catchment area, Tap O'Noth Community Council and Local Councillors were invited to participate in the event. Communication regarding the session was also published on the Council's website and Facebook pages. Ten members of the public attended the meeting. A further engagement session is planned for 26 March 2024 to discuss the situation with members of the community.

### **4. Options Appraisal**

An options appraisal has been undertaken to consider the future of Clatt School to ensure the best educational and wellbeing benefits for pupils within the Clatt catchment area.

#### **4.1 Clatt School**

Clatt School is non-denominational and serves the settlement of Clatt and the surrounding rural area. Clatt is located 10 miles south of the town of Huntly.

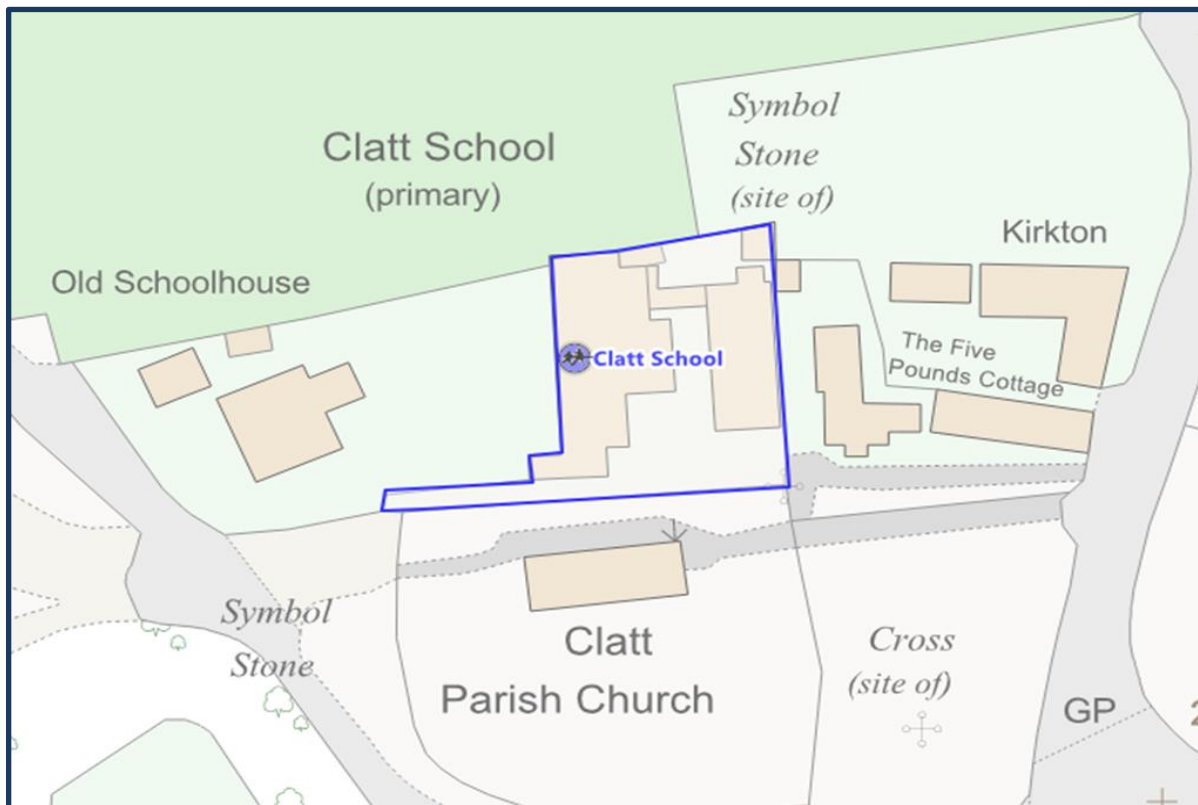
The school has a capacity of 50 pupils and was built in the nineteenth century and renovated in 1985. In 1995 an extension was completed which added a new general purpose space (GP Space). The accommodation of the school consists of a shared GP space with servery/dining area, library, and open plan classroom. The school has a servery and meals were prepared at Kennethmont School.

The school floorplan is attached as Appendix B2, and a map of the school grounds and its

## From mountain to sea

surrounding amenities is shown in Map 1 below.

Map 1 – Clatt School site plan



Clatt School delivered primary education from P1 to P7, and pupils were taught in a multi-composite single class. There is no nursery on site and local children often attended nursery at other nearby schools.

A high-level review of the title deeds has been requested. There is no record of the building, or any part of the building being listed with Historic Scotland.

### 4.2 Clatt School Core Facts

Condition is an assessment of the physical condition of the school building and its grounds. Clatt School was assessed in March 2022 and the overall condition rating for the property is 'B – Satisfactory', performing adequately but showing minor deterioration. Whilst the property is scored 'B', this is towards the lower end of the scale and on the edge of receiving an overall score of 'C – Poor', showing major problems and/or not operating optimally.

Within the condition survey the following elements received a grade 'C':

## From mountain to sea

- Main Building – heating, electrical power, lighting, paths and paved pedestrian areas, internal and external decorations.
- Temporary Accommodation – roof coverings, ceilings, external walls, heating, electrical power, lighting, fire precaution, internal and external decorations.

The condition survey considered maintenance required to maintain service delivery for the next five years and the total investment required is £236,900.00 equating to £626.72/m<sup>2</sup>.

Suitability is an assessment of the school as a whole, the buildings, the grounds and the impact they have on teaching and learning, leisure and social activities, as well as the health and wellbeing of users. The Suitability assessment of Clatt School was carried out in March 2019, the school was graded as 'B – Satisfactory', performing well but with minor problems (school buildings and grounds generally support the delivery of services).

The external facilities which include drop-off/pick up areas, the car park and bike storage were 'C – Poor', showing major problems and not operating optimally (the school buildings and grounds impede the delivery of activities that are needed for children and communities in the school). There is no dedicated drop off/pick up area

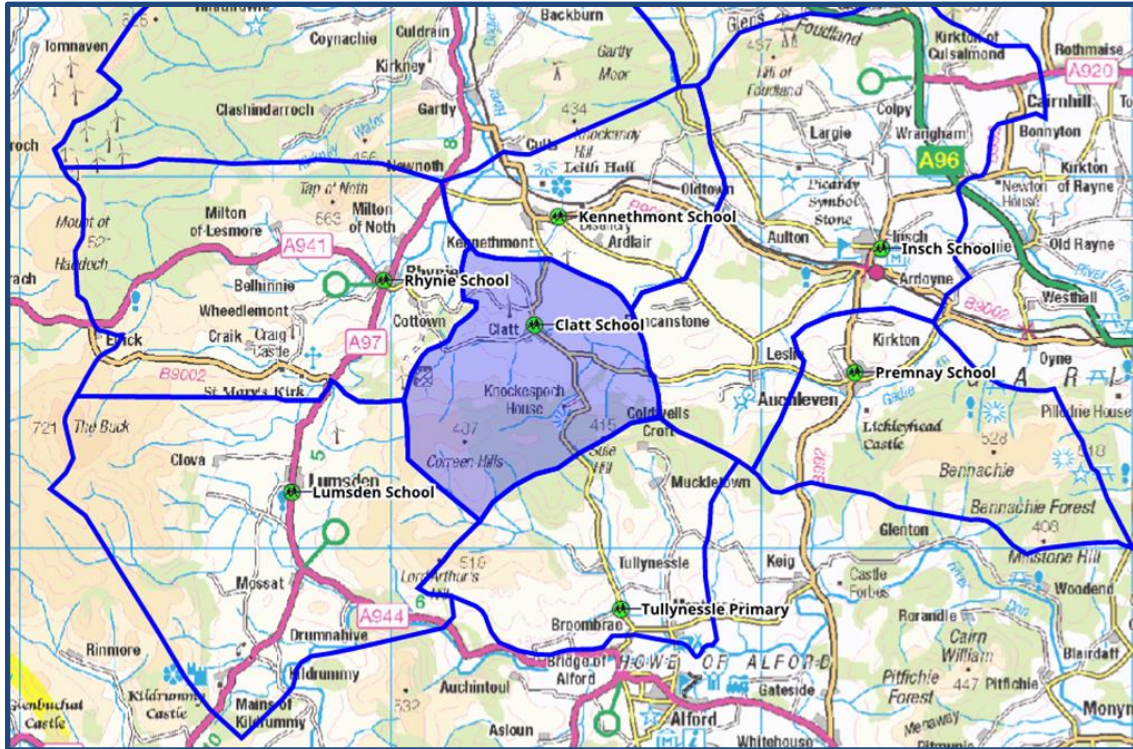
### **4.3 Clatt and Local Area**

Under the Scottish Government Urban Rural Classification Clatt School is in a 'remote rural area' (settlements with a population of less than 3,000 people, and with a drive time of over 30 minutes to a settlement of 10,000 or more).

The catchment area for the school, which extends from the Correen Hills in the south to Boghead in the North West of the catchment, is shown in Map 2 below.

Map 2 – Catchment area for Clatt School and surrounding schools

## From mountain to sea



Clatt School, Rhyynie School, Kennethmont School, Insch School, Premnay School are located within the Huntly Cluster. Lumsden School and Tullynessle School are within the Alford Cluster.

Distances between Clatt School and surrounding schools sourced from Google Maps are listed below:

- Kennethmont School – 2.5 miles
- Rhyynie School – 3.5 miles
- Insch School – 7.4 miles
- Premnay School – 5.9 miles
- Lumsden School – 7.6 miles
- Tullynessle School – 5.7 miles

The Scottish Index of Multiple Deprivation (SIMD) is a measure of deprivation across 6,976 data zones. SIMD ranks data zones from most deprived (ranked as 1) to least deprived (ranked as 6,976) and the Clashindarroch data zone is ranked at 4349. This indicates that pupils living within the Clatt School catchment are not considered living in socio-economical deprived households.

### 4.4 Rural Sustainability and Housing Development

## From mountain to sea

Members of the community travel to Inch or other nearby settlements such as Inch, Rhynie Huntly or Alford to access shops, post office, health centre and community sports facilities.

There are no Masterplans agreed for Clatt and any other housing developments located within the Clatt School catchment area. Therefore, there is little prospect of generating new pupils into the area to reinstate the school.

### **4.5 Demographics and Pupil Numbers**

Prior to the school being mothballed the roll at Clatt School had been changing due to parents submitting placing requests out of the school. The P1 intake ranged from one to three pupils.

In August 2022, when the school was mothballed, there would have been only seven pupils on the roll taught in one composite P1 to P7 class. There were two P1 age children who were in zone to attend, however a placing request was submitted for one of the children to attend a different school, leaving one P1 child starting in August 2022.

There are currently 13 children of P1-P7 age residing within the catchment area of Clatt School (SEEMIS extract March 2024). These children all attend other schools in the area, some through placement when the school was mothballed and others through parental choice in previous academic sessions. The majority attend Kennethmont School and Rhynie School. There is one nursery aged child enrolled at a nearby council nursery.

School roll forecasts show a very small number of families living in the catchment area with children that are under school age. According to the NHS data, five children within the catchment area could enroll for P1 between August 2024 and August 2026.

### **4.6 Occupancy**

During 2020/21 session at its peak there were eight pupils on the school roll. With the capacity of 50 the occupancy level was 16%. From August 2021, with a roll of only six pupils the utilisation of the school reduced to 12%. Such a low occupancy level does not support the wellbeing of all learners and does not meet their varying needs. In addition, low occupancy is unsustainable, unaffordable and does not offer the best value.

### **4.7 Pupil Enrolments**

As outlined above in Section 2 of this report, Aberdeenshire Council had written to parents/carers of pupils residing within the Clatt School catchment to enquire if they wished their children to continue their education at Clatt School, but there was an insufficient number of pupils wanting to return for the school to become operational again and to ensure the educational experience is viable.

Each year in January a press release is issued to inform families that applications can be made for pupils to enroll at the school. Since 2023/24 academic year \*\* families have

## From mountain to sea

approached Aberdeenshire Council to enroll their children at Clatt School. Similarly, each year the deadline for submitting placing requests for August start is 15 March and there have been no applications received or any expression of interest for pupils wishing to attend Clatt School since the school was mothballed.

From the data held by the Service, all children known to be residing in the Clatt School catchment have now submitted placing requests to attend other schools.

### 4.8 Clatt Community

While in operation, the school did not operate a breakfast or after school club. The school building was rarely used as a community facility during the time it was operational as a school. This indicates that the community does not rely on the school as a public/community facility. The village is well served by a village hall and the Auld Kirk and a small library.

As discussed above in Section 4.4, residents travel to the nearby settlements to access services, such as GP, dental surgeries, shops and other community facilities.

The evidence outlined above indicates that there will be little impact on the existing arrangements of the community as well as its sustainability if the school was closed.

## 5. Options for Consideration

Alternative suggestions for the school building were received, some are educational/community based, whilst others would involve commitment from other agencies or private companies. These cannot be implemented or trialed without the formal closure of the school.

A summary list of suggestions and comments with an overview of the requirements for them to be implemented can be found in the below table.

Table 1

No.	Comment/Suggestion	Requirement for implementation
1	Use as stand-alone nursery	School closure process - further engagement with other sectors within Aberdeenshire Council, community or private sector commitment
2	Remove hall/dining and relocate for elsewhere to use.	The village has a community village, library and use of the Auld Kirk. Relocation of the non linked accommodation in which the dining is housed would not be viable.
3	Day Care Centre for senior citizens for social activities for a hot meal.	School closure process - further engagement with other sectors within Aberdeenshire Council, community or private sector commitment.
4	Use as a multi-site school for Kennethmont (dual zone) or P1-3 stage	This would not follow standard practice for a cohesive educational experience.



## From mountain to sea

5	Shop or small supermarket	School closure process - private sector commitment
6	School could be leased from the council by a trust formed by the village and used as holiday accommodation/hostel.	School closure process - further engagement with other sectors within Aberdeenshire Council, community or private sector commitment
7	Sell for private dwelling	School closure process - private sector commitment

The following options were considered for the future of Clatt School as part of the options appraisal:

- 1 Reopen the school – Reopening of the school requires families who wish to enroll their children at the school. No pupils have enrolled at the school and no families have indicated that they would wish to attend the school for the 2024/25 session. This option has been discounted.
- 2 Continue Status Quo – The school remains mothballed for a further session and potentially beyond. The school has been mothballed since August 2022. The longer the school is mothballed it causes more uncertainty for the families and the local community. The janitorial team are carrying out routine checks of the building and will organise for repairs if required and when appropriate however, there is a greater chance of mechanical failure of the heating system while it is not operational. Unoccupied buildings deteriorate more quickly than operational premises and are more likely exposed to potential crimes and acts of vandalism. The option to continue the status quo option has been discounted.
- 3 Consider the closure of Clatt School and rezone pupils to a different school in the area.

## 6. Conclusion

One of the options identified as part of the options appraisal is to close Clatt School. This is currently considered to be the only viable option for the school; therefore, Aberdeenshire Council must undertake a statutory consultation under the Schools (Consultation) (Scotland) Act 2010. As a rural school, there is a presumption against closure and Aberdeenshire Council must ensure all other alternatives have been identified and robustly considered prior to undertaking any statutory consultation on this matter.

## From mountain to sea

### Appendix B1

#### Online Survey Summary

On 13 September 2023, letters were sent to all residents residing within the catchment area of Clatt School to obtain their views on the future of the school. The letter contained information on the survey as well as a link and a scannable QR code, and that the survey would close on 6 October 2023 and anyone in a household, including children could have participated. A total of 21 responses were received.

Additionally, any further suggestions could have been submitted by email to [LearningEstates@aberdeenshire.gov.uk](mailto:LearningEstates@aberdeenshire.gov.uk) or posted to Aberdeenshire Council, Gordon House, Blackhall Road, Inverurie, AB51 3WA. Three emails were received with further comments/suggestions.

The survey asked questions about the future of Clatt School as well as any alternatives and suggestions to the school closure. This report shows a summary of the results received.

Question 1 - The participants were asked what group of interest they represent.

The survey was completed by nine parents/carers, seven members of the community, one former staff member and four were former pupils and a grandparent.

Question 2 - The participants were asked if they live in the Clatt School catchment area.

The majority (18) of participants indicated that they reside in the Clatt catchment area.

Question 3 - The participants were asked whether they have school aged children and which school or nursery they attend.

Nine respondents have school age or younger children. Five of whom are attending Kennethmont School and the rest either The Gordon Schools or a private early years setting.

Question 4 - The participants were asked what year group their children are in.

The parents/carers responded that they have nursery and primary and secondary aged children.

Question 5 – The participants were asked if they would wish their children to attend Clatt School if it reopens.

14 people responded and five indicated that should the school reopen they would like their children to attend. The breakdown of age groups is two children in nursery, two in P1-3, two in P6-7.

## From mountain to sea

Question 6 – The participants were asked what if there is sufficient interest from families to reopen, what should happen with Clatt School.

Of the 21 participants, 15 were of the opinion that the school should reopen (seven of these have children who attend either nursery, primary or secondary school). The rest of the participants who selected yes to this question are members of the community, former staff member and previous students. One was of the opinion mothballing should continue. Three participants were of the opinion the school should be permanently closed.

Question 7 - The participants were asked if there is anything that they thought Aberdeenshire Council could do to encourage families to register at Clatt School and help the school to reopen.

The comments were as follows:

- The problem is that as the school is already mothballed, encouraging parents to move children already settled is a near impossible task.  
Also, parents are not going to enrol a child with the constant worry of closure over their heads. Clatt roll has always been fluid as the council well knows. The council have always had this as their goal following their failed attempt to close the school a number of years ago. My feelings are there was always a long game being played and ultimately the council have achieved their intention of closing the school. It's appalling that the lack of information and exclusion of residents lead to a fait accompli. Congratulations, another rural school gone.
- Don't allow pupils that live in the Clatt School catchment area go to other schools in the area unless there is a justifiable reason as there are quite a number who had done this previously. If they hadn't done that perhaps the school might not have closed.
- Sadly, no. Given approx. 17 kids in the area, 3 new borns, 2x age 2-4 = 12 kids. 4 of those only have 2 years left of school. This quickly leaves 8...10.... then by the time the 3 babies are old enough you lose another 5... back to 8. It's a shame as the families get on well and its sad, we're now split between Kennethmont & Rhynie but feel you'd never have the same environment with different staff and also feel the children have more opportunities in a bigger environment/peer group.
- I doubt there is any meaningful way to encourage parents to place their children in Clatt - we chose to put our sons out of zone to Inch around 2005 as they'd been at nursery there and with no other children near our home we felt they needed a better size of peer group.  
There is still a lack of primary school children in the catchment area - I see a significant area is the Whitehaugh Forest which only has 6 houses, including one which is a holiday/weekend retreat and the demographic of the residents means there won't be any children unless houses are sold and subsequently bought by a family of an appropriate age to have children.
- Make an attractive offer extolling the virtues of small rural schooling with the promise a new head teacher would be sought.

## From mountain to sea

- Advertise for a new HT, expand the Clatt catchment as Kennethmont has currently taken on the Gartly catchment
- Review the catchment area. Open a nursery. Parental choice should only be viable if the child's needs cannot be met in the catchment school provided for them to attend. Remove the threat of closure which has hung over the school for the past 15 years, having a negative impact on those attending it, or considering attending.
- No
- Engage with all residents within the catchment area and specifically state that the school is Not permanently closed as of the current date, or ask families if they would consider relocating their child to the school if they are close enough to the school to do so
- Not allow school children to go other schools close to the village and invest in building more houses within Clatt as well as ensuring better transport links.
- Clatt School has always had fluctuating roles due to its geographical area. The lack of certainty over its future coupled with the Headteacher's lack of experience lead to a toxic environment that parents sought to remove their children from. There may have only be 6 children in the school but there were more choosing to go to other schools due to this that would keep the role above 8. The council did nothing to question or fix this. Give Clatt a good teacher, with an experienced head teacher over seeing it, the children will be there....instead of in another school increasing the carbon footprint as Maxine pointed out.
- Provide a teaching environment which embraces local values and involves parents/carers. Listen to parents' concerns. Demonstrate children are encouraged to achieve their full potential.

Question 8 - The participants were asked if the school closes, which school catchment area should Clatt School be realigned to.

Many of the participants left more than one answer to the question in which they chose both Kennethmont School and Rhynie School which could indicate the desire for a dual zone, but this was not offered as an option. The majority are of the opinion that the catchment should be rezoned to Kennethmont School. The results are; Kennethmont (11), Rhynie (9), Tullynessle (2), Inch (2) and Premnay (1).

Question 9 - The participants were asked for suggestions on the future of Clatt School, including alternative uses for the building.

The participants provided the following comments/suggestions:

- It has been suggested that the school building would make a good nursery. I am unfamiliar with the need for such a service, but wished to make the suggestion as it came from a local mother with children.  
I would also like to make known my wishes to be kept informed of the use/non-use or potential sale of the school building as the property sits next to my home and overlooks my property.

## From mountain to sea

- It would very much depend on who would be expected to support options financially. Clatt is a small community who would struggle to support another building.
- If the hall/dining room building could be removed, relocate it elsewhere and use it. As Clatt Village Hall does not get much use, I can't see a use for the school as it is or of be of any use to the community. Therefore, probably sell it for a dwelling house conversion.
- This building should NOT be redeveloped into housing
- Sadly no. The hall is a great asset to the village with the grounds also. The school playground is nice for the kids to use their bikes/play basketball still. It could be rented out to the public but again we are spoilt for local halls. It was set up with funded preschool items, it would be great if these could go to the hall for the new babies in the village if they wish to meet or to Kennethmont or the newly established Garty toddlers at the Tin hut.
- Use Clatt for p1-3 as Kennethmont expands.
- I think it should stay within the AC education estate, it could be used as a standalone nursery, or the senior pupils from Kennethmont could go there to relieve pressure on numbers within the Kennethmont building. It is a lovely school and its loss has been a blow to the community. Having a school served to create community feeling, networks and a sense of place for children and parents alike. Being able to walk to the school, meet with local parents, children and staff, all with a shared aim (children's education) really helped with the sense of community. Throughout the year there would be connections to the community with school shows in the local hall and church. It is a real miss.
- Day Centre for senior citizens to attend for a hot meal and social activities.  
- Nursery
- If the school does permanently close, an ideal use of the building would be for it to become a local shop, as the village has plenty of community buildings already, however, is in desperate need of a small local shop with essentials in. This would help greatly, especially during the winter periods where elderly or anxious residents can get food/drink without having to go to Huntly, Inch, or Alford.
- The building could be used as a nursery.
- Use as a multi-site school for Kennethmont primary, as it is nearly at capacity, (lower primary years) or use as a nursery as it is ideal as a free flow arrangement with the rooms.
- The school could be bought from the council or leased on a peppercorn rent by a trust formed by the village. It could be rented as holiday accommodation / hostel for people exploring the area and managed by the community. There is so much history that very few people would want to lose it. Could be used as a nursery or kindergarten.
- The building is a school, it was built to teach, it's used for teaching and it should continue to be used for teaching for many generations to come. The council need to look at their role in why this is where it is, how they can use Clatt school to alleviate the very obvious pressures in the surrounding schools and teach our children. Don't mask money saving tasks behind care for children's education. Anyone can see a small

## From mountain to sea

school can work well with the right teacher. Work with the community instead of putting it in the gutter.

### **Drop in session**

At the drop in session on 4 October 2023, the attendees were told they could email Learning Estates with any further comments and that the time period for submissions would be extended until 30 November. Three people responded with the same email message:

“As discussed at the meeting in Clatt hall I would like to propose that Clatt School be dualled with Kennethmont School, and that the people of Kennethmont are given the chance to place their children in Clatt school. The dualling of the schools could be a great opportunity to offer a broader range of experience and potentially quieter environment for those who benefit from it. The loss of the school has been felt all across the village. For some isolated folk it provided some of the few social engagements they had, not to mention the food hampers the PTA organised each year for the older residents. Anything that could be done to keep the school part of the learning estate should be considered. There are already a number of new babies in the village, and it wouldn't be hard to imagine a point in the very near future that the numbers would be viable again”.

### **Online Survey and Drop in Session Conclusions**

Of the 15 participants who were of the opinion that the school should be reopened if sufficient interest from families, seven of them have children who would be eligible to enroll at the school. This equates to two pre-school age children and four who are P1-3 age.

The majority of the participants believed that should Clatt School close then the catchment area should be realigned to Kennethmont School or Rhynie School.

Comments were made that the council should not allow the children who live in the catchment area to attend other schools. This would not adhere to the parents charter which allows for parental choice when choosing an educational setting for a child.

There is a lack of pre-school/primary age children in the Clatt catchment area, which is not expected to change in future years. There are no housing allocations in the Local Development Plan for the area.

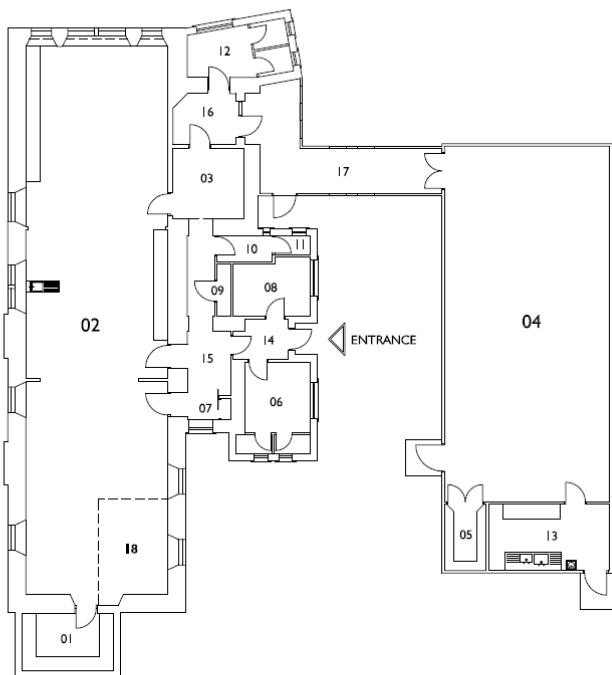


From mountain to sea

Appendix B2

Clatt School Floorplan

THIS DRAWING IS FOR GENERAL REFERENCE PURPOSES ONLY - ALL DIMENSIONS ARE TO BE CHECKED ON SITE.



**EDUCATIONAL AREAS**

- 01 9.1sqm Store
- 02 125.6sqm Open Plan Classroom - approx. area
- 03 8.9sqm Resources / Library
- 04 104.0sqm GP Room / Dining (temp)
- 05 4.9sqm PE Store (temp)

EDUCATIONAL AREA MAIN BUILDING = 143.6sqm  
EDUCATIONAL AREA TEMP. ACCOMMODATION = 108.9sqm

**ANCILLARY AREAS**

- 06 10.8sqm Boys' Toilets
- 07 0.4sqm Electrical Cubd
- 08 7.4sqm Staff Room
- 09 1.3sqm Cleaner's Store
- 10 2.6sqm Staff Toilet (outer)
- 11 1.2sqm Staff Toilet (inner)
- 12 9.0sqm Girls' Toilets
- 13 14.2sqm Servery (temp)
- 18 11.9sqm Office Area - approx. area

ANCILLARY AREA MAIN BUILDING = 44.6sqm  
ANCILLARY AREA TEMP. ACCOMMODATION = 14.2sqm

**CIRCULATION AREAS**

- 14 3.7sqm Entrance Vestibule
- 15 11.5sqm Main Corridor
- 16 5.6sqm Girls' Toilets Corridor
- 17 20.6sqm GP Corridor (temp)

CIRCULATION AREA MAIN BUILDING = 20.8sqm  
CIRCULATION AREA TEMP. ACCOMMODATION = 20.6sqm

**GROSS INTERNAL FLOOR AREAS :-**

MAIN BUILDING	=	<u>233.4sqm</u>
TEMPORARY ACCOMMODATION	=	<u>144.8sqm</u>

Floor Plan - NOT TO SCALE sheet 1 of 1

Amended 5th June 2003

REFERENCE DRAWING No. G1257 RFI  
Date Surveyed 28 JUL 98  
Date Drawn 07 OCT 98  
CLATT PRIMARY SCHOOL  
Clatt, Huntly