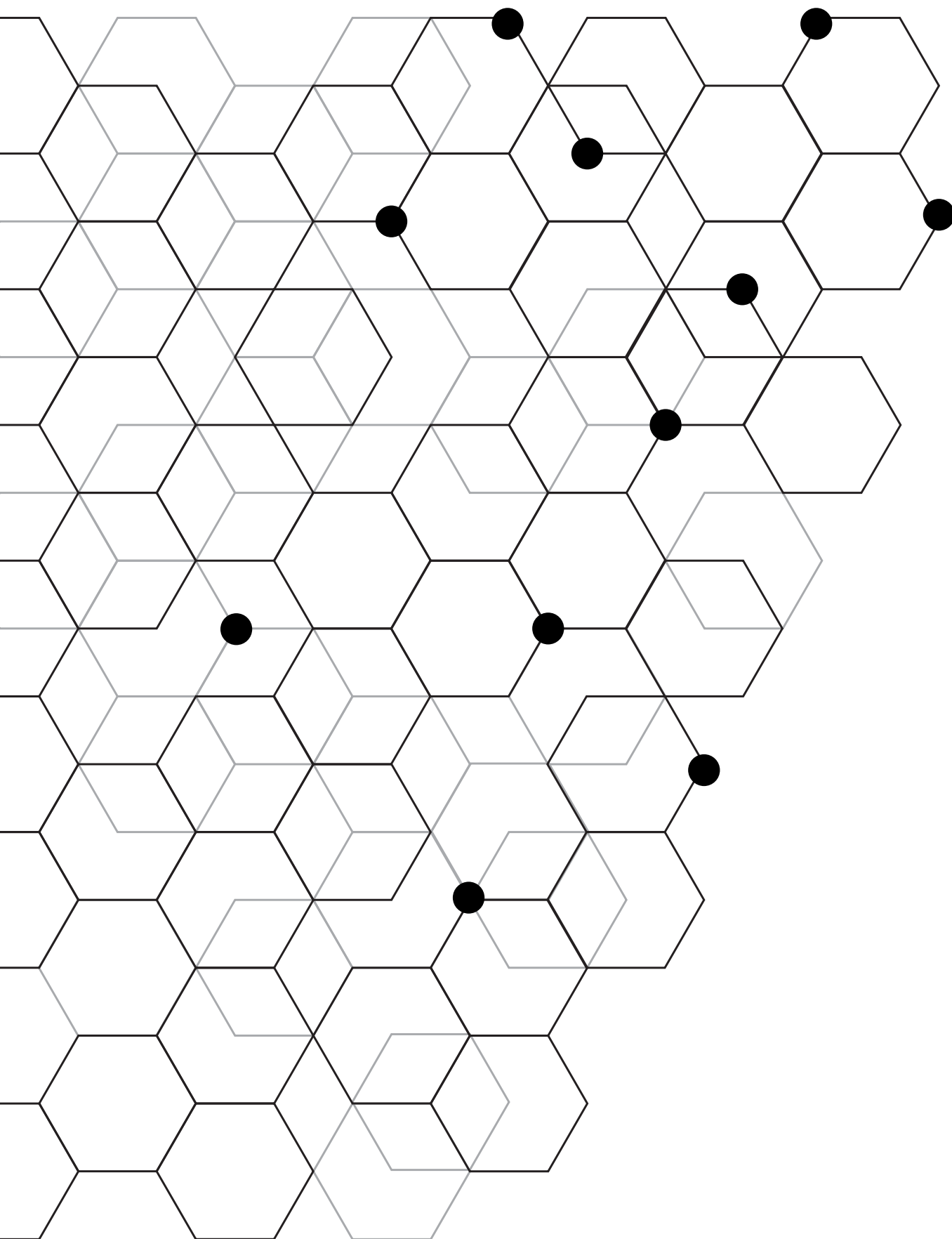


APPENDIX 04

BOUNDARIES OF THE GREEN BELT



APPENDIX 4

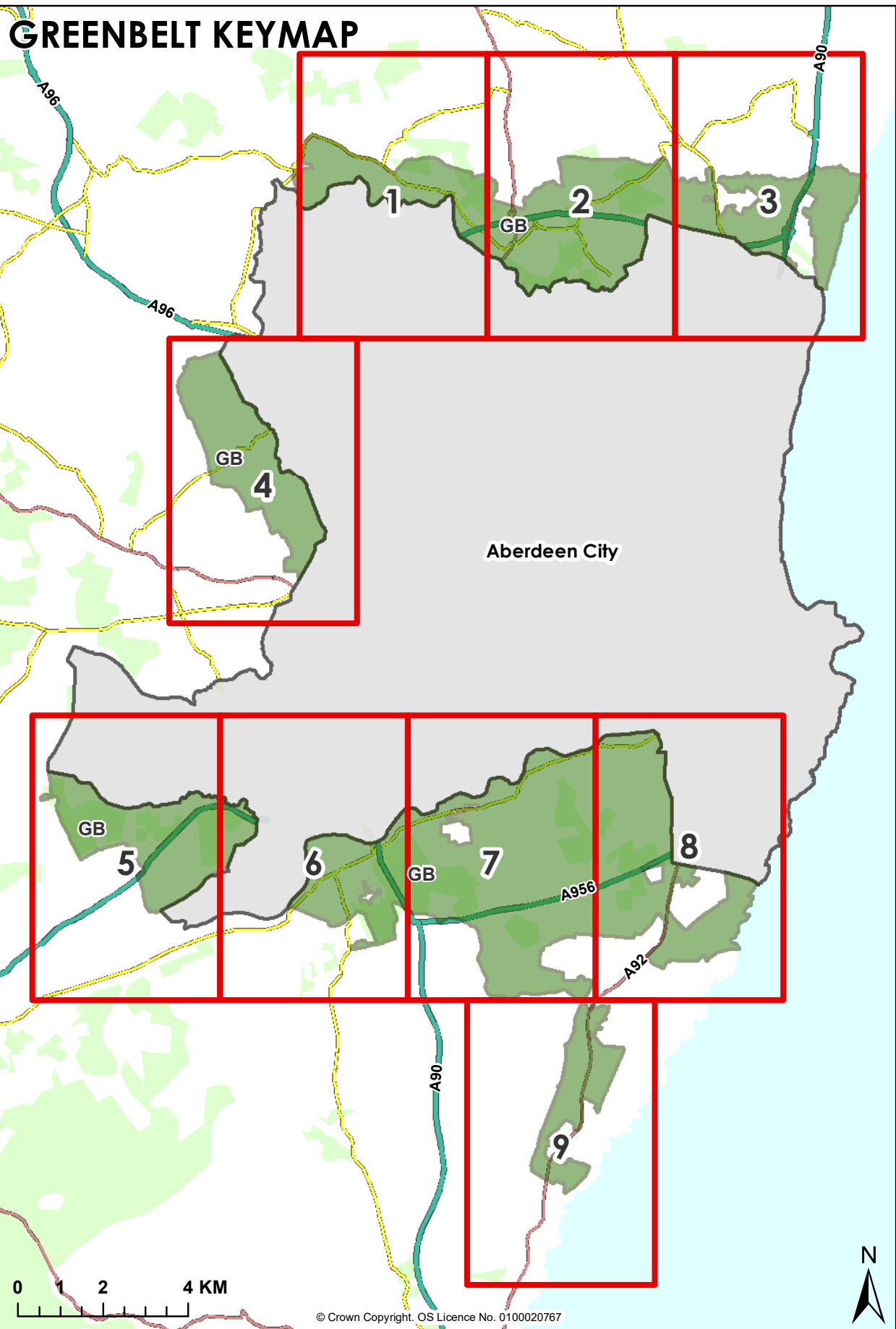
BOUNDARIES OF THE GREEN BELT

The green belt has boundaries defined by an empirical assessment of the countryside areas around Aberdeen and the function that they currently have in the development plan. This can impact on the outer edge of the green belt itself, and in particular the width of the green belt as it is found in Aberdeenshire. Strategic and Local Development Plans should be based on Spatial Strategies that are deliverable, taking into account the scale and type of development pressure and the need for growth and regeneration. For most settlements, a green belt is not necessary as other policies can provide an appropriate basis for directing development to the right locations (such as the rural development policies).

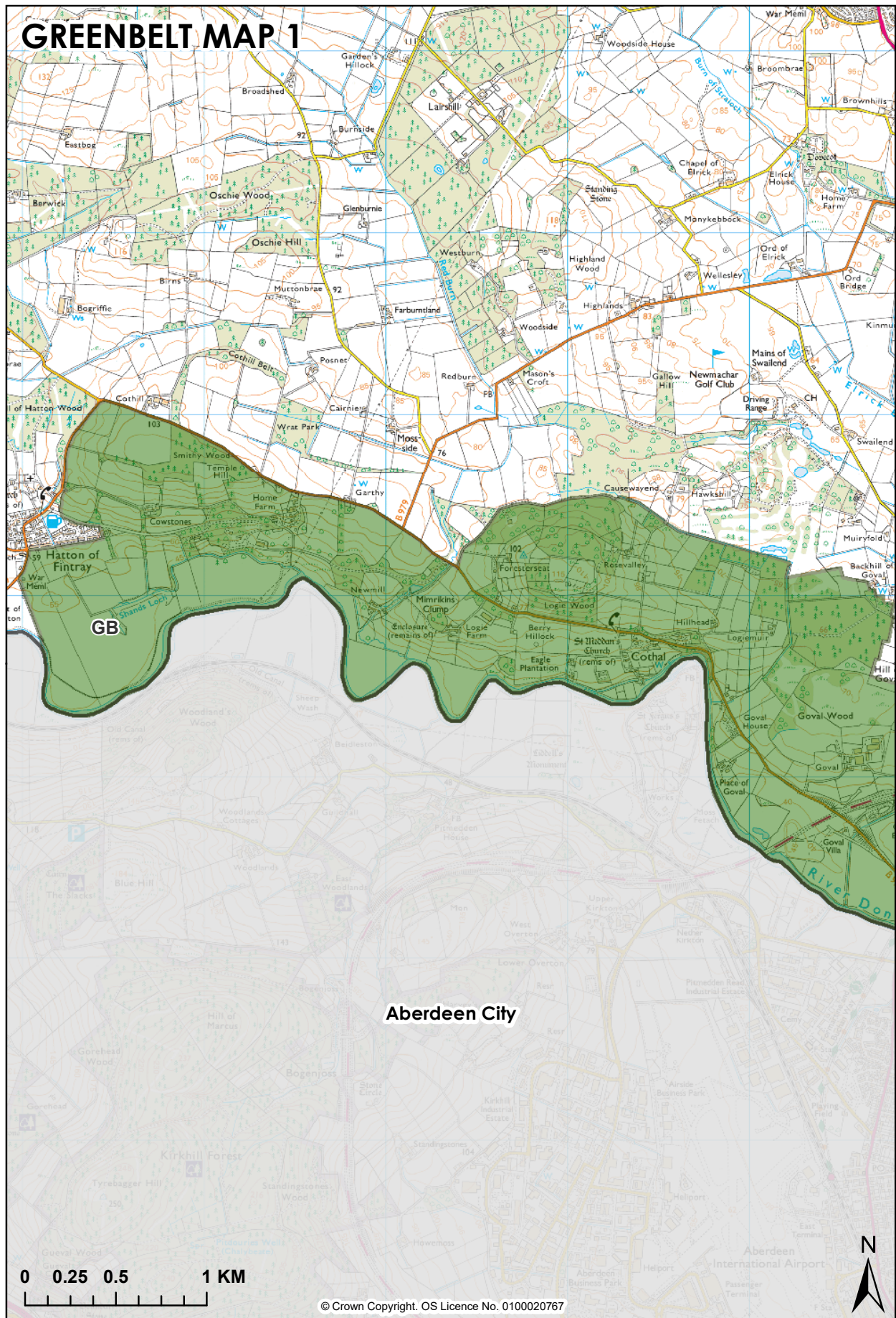
However, where the Planning Authority considers it appropriate, the development plan may designate a green belt around a city or town to support the Spatial Strategy by:

- directing development to the most appropriate locations and supporting regeneration;
- protecting and enhancing the character, landscape setting and identity of the settlement; and
- protecting and providing access to open space.

The maps that follow this appendix details the green belt boundaries.



GREENBELT MAP 1



GREENBELT MAP 2

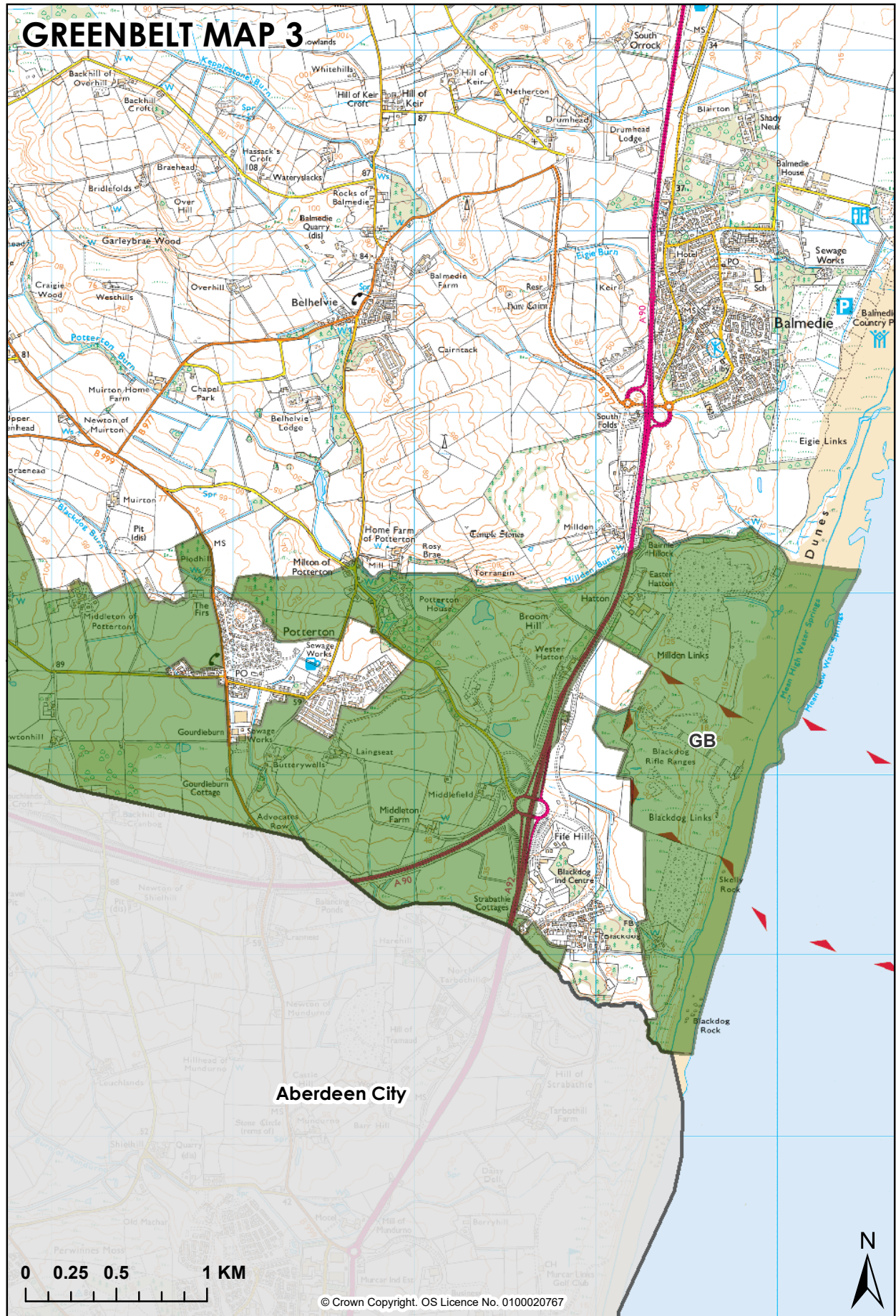
GREENBELT MAP 2

0 0.25 0.5 1 KM

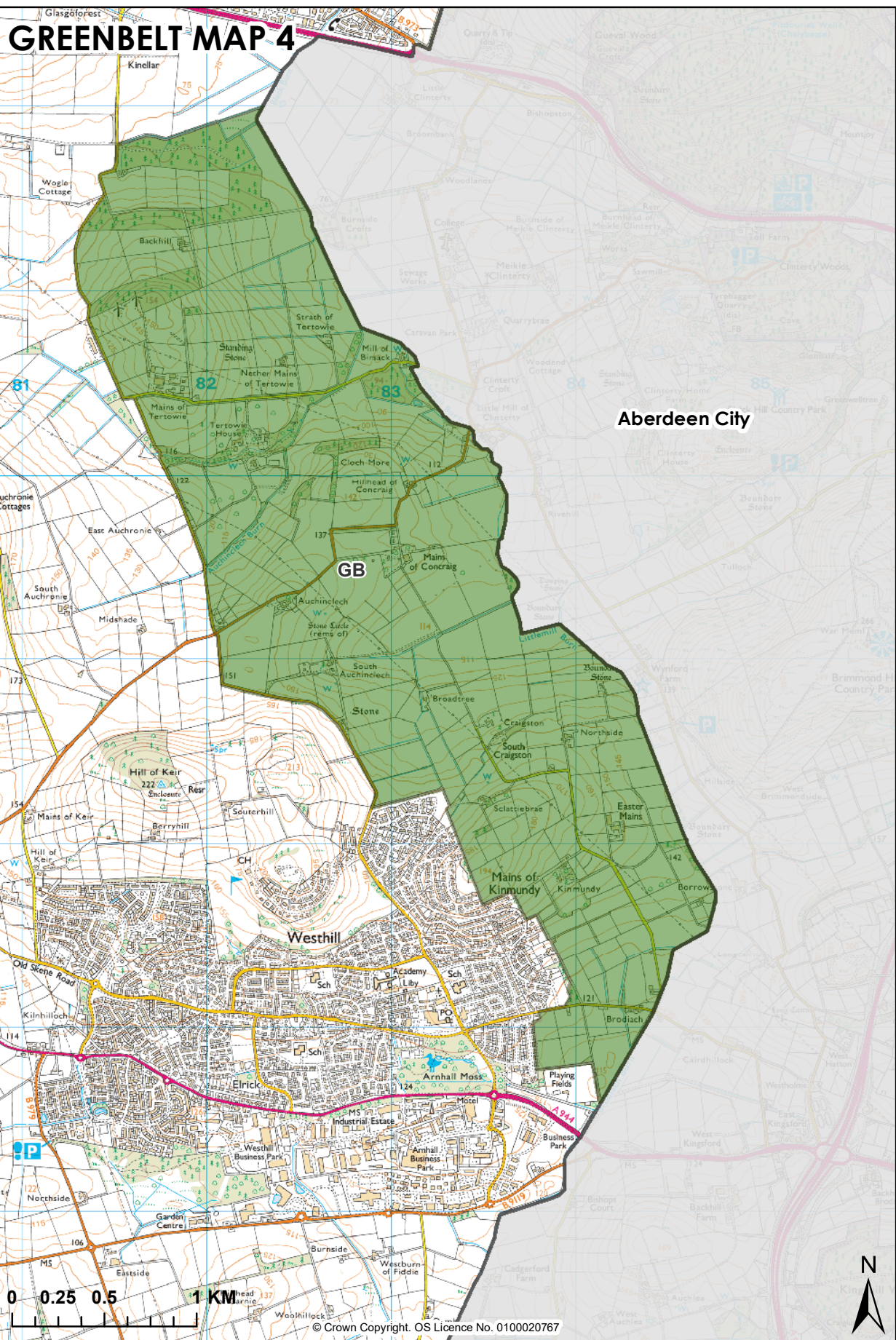
Aberdeen City

© Crown Copyright. OS Licence No. 0100020767

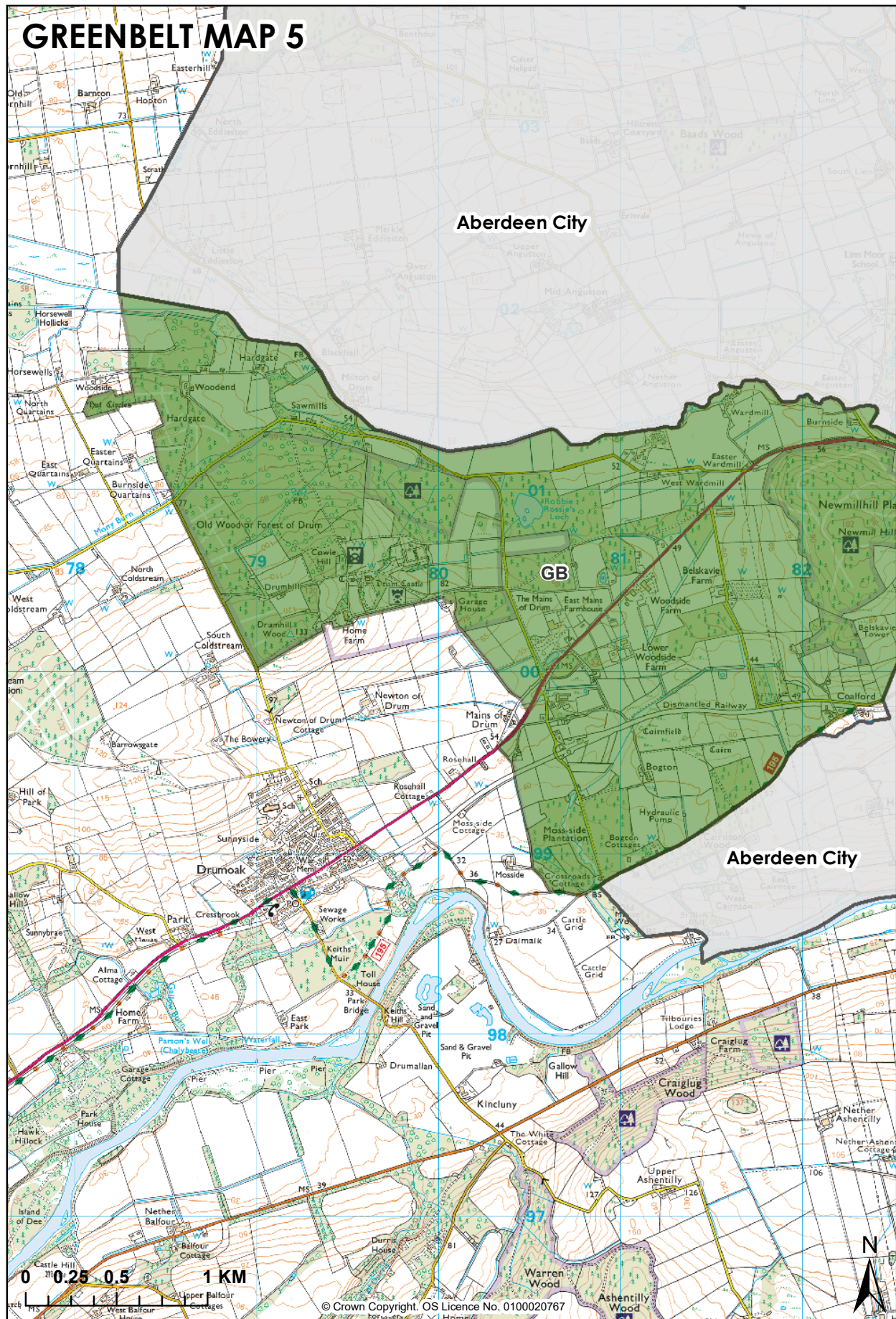
GREENBELT MAP 3



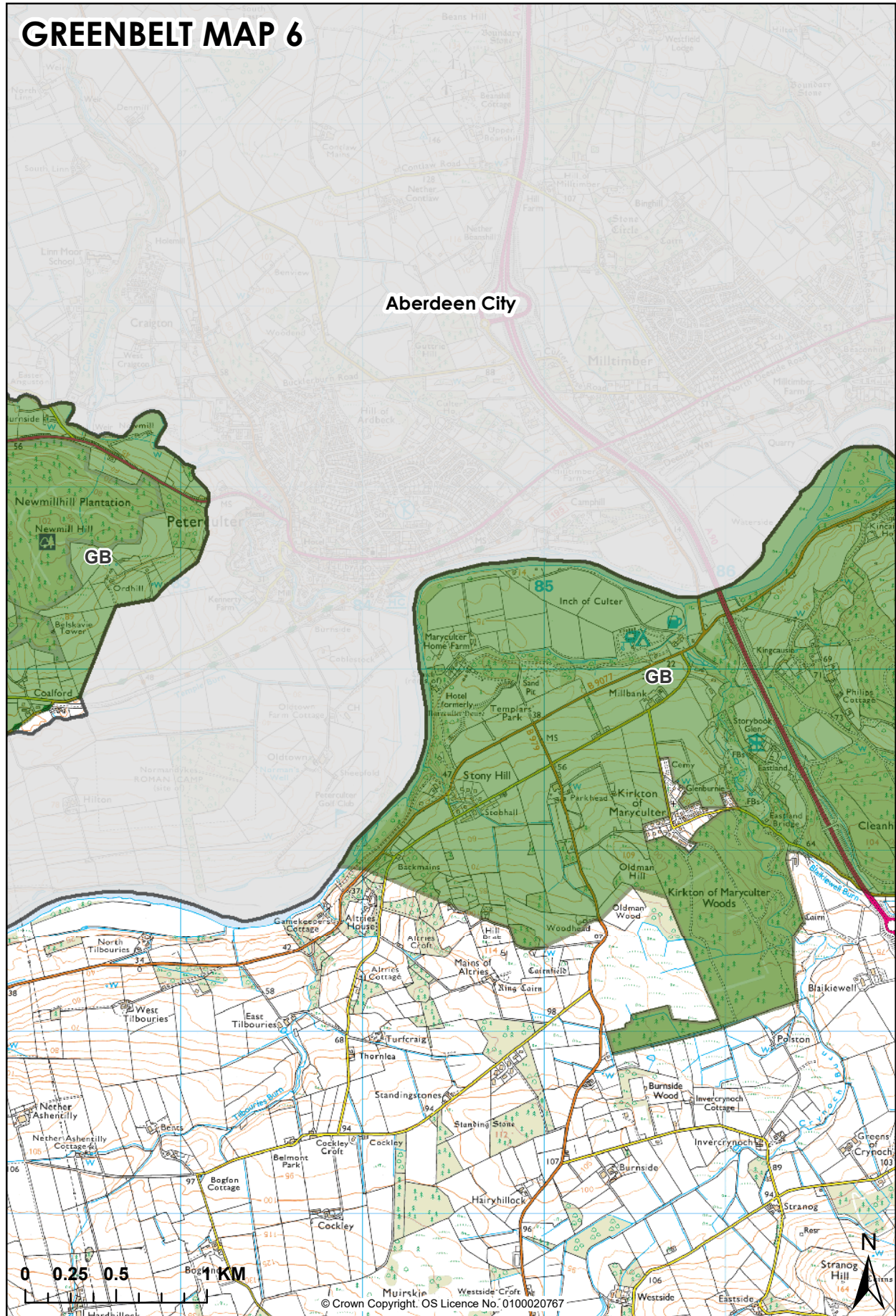
© Crown Copyright. OS Licence No. 0100020767



GREENBELT MAP 5

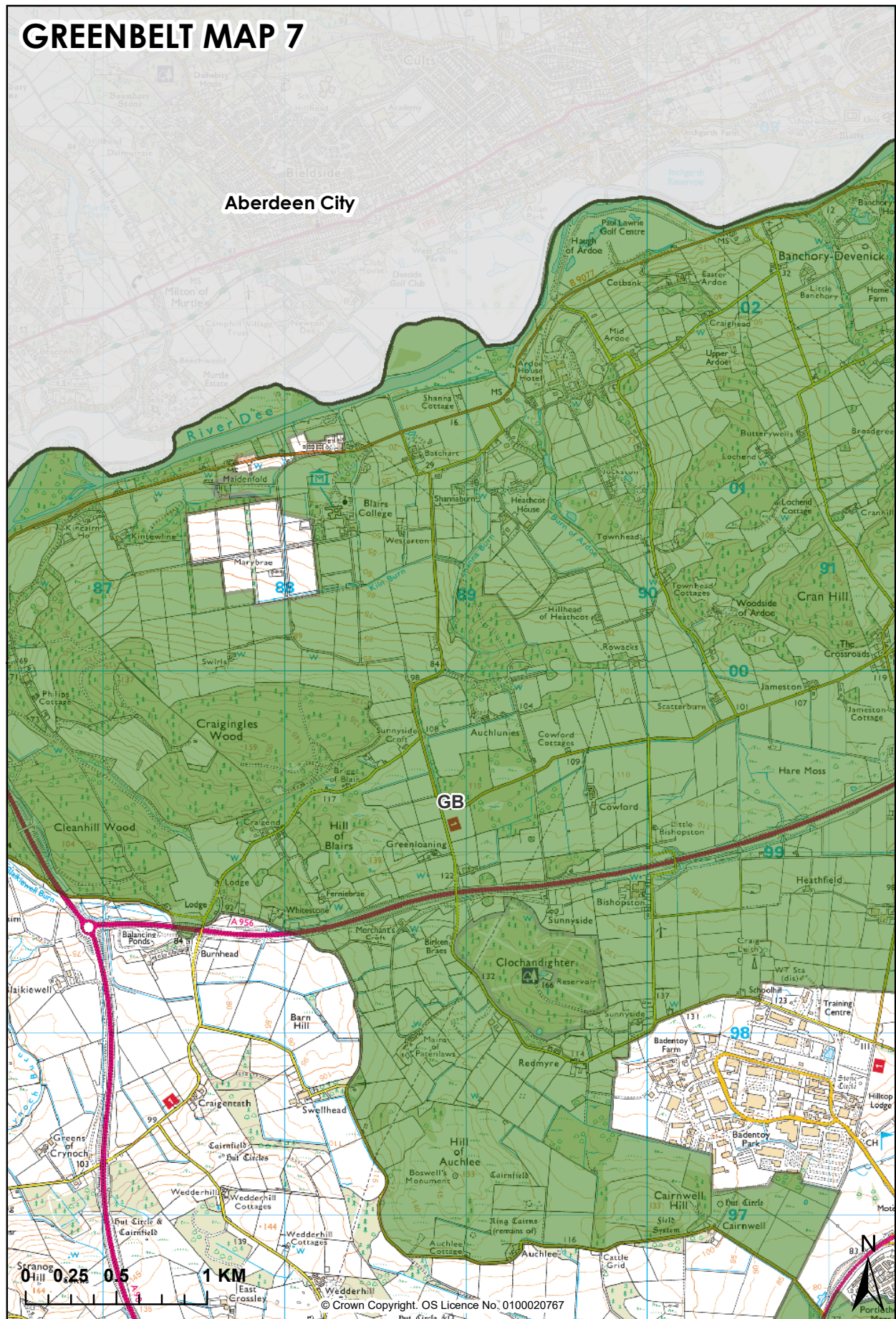


GREENBELT MAP 6

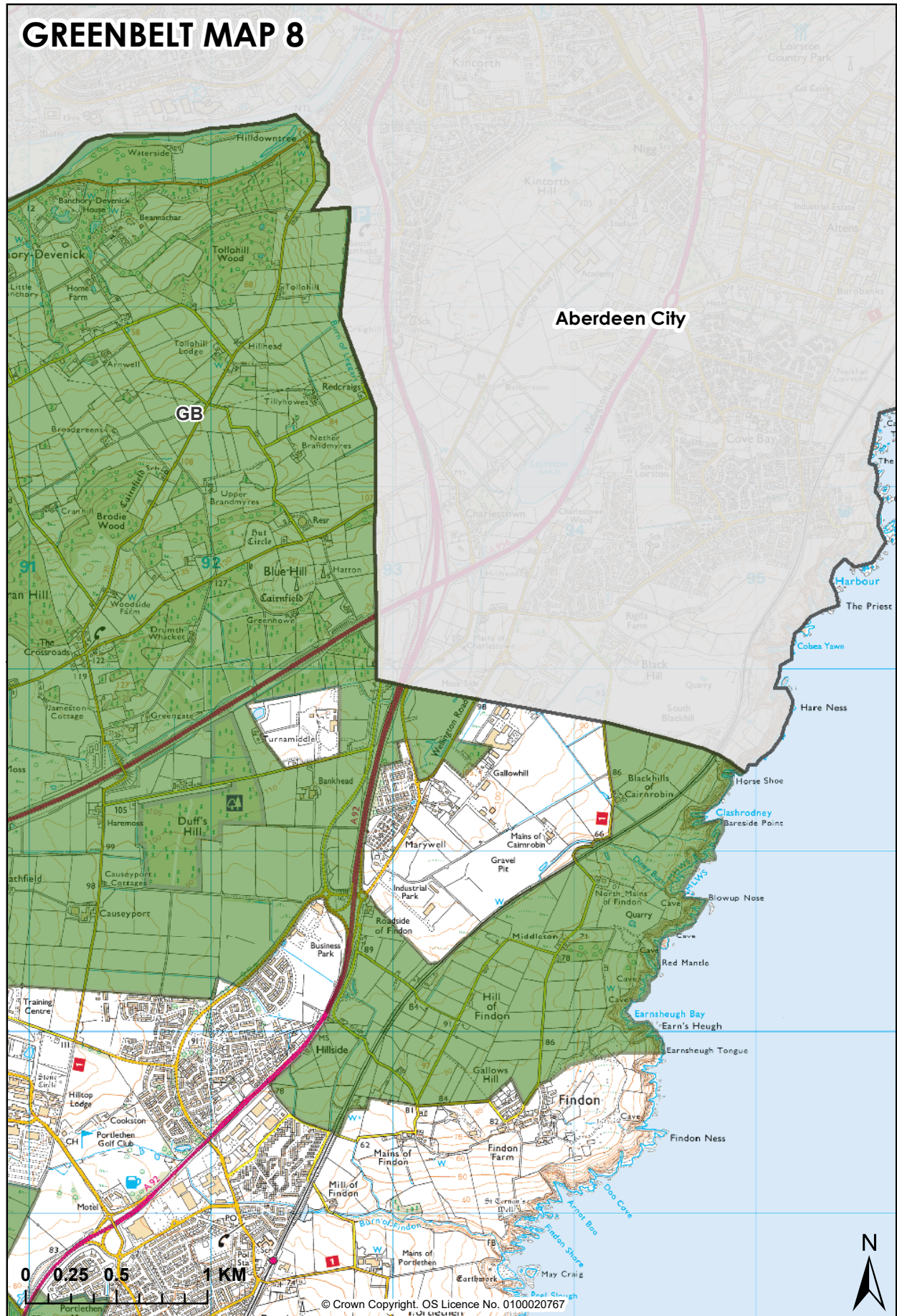


GREENBELT MAP 7

Aberdeen City



GREENBELT MAP 8



GREENBELT MAP 9

This map shows the Greenbelt area, a large green-shaded region in the center. Surrounding towns and villages include Portlethen to the north, Newtonhill to the east, and Muchalls to the south. The map features numerous geographical details such as the River Ugie, various hills (e.g., West Clasheshar, Cran Hill), and smaller settlements like Cammachmore and Newtonhill Farm. A scale bar at the bottom left indicates distances up to 1 km, and a north arrow is located at the bottom right. The map is labeled with various place names and geographical features, providing a comprehensive view of the area.

