

© Crown copyright and database rights 2014. Ordnance Survey 100020767

© Mott MacDonald
This document is issued for the party which commissioned it and for specific purposes connected with the captioned project only. It should not be relied upon by any other party or used for any other purpose.
We accept no responsibility for the consequences of this document being relied upon by any other party, or being used for any other purpose, or combining any error or omission which is due to an error or omission in data supplied to us by other parties.
P:\Inverness\Projects\DR\AWM\CS\345087_Scheme\aven FPS\80000_Sheet Layouts\MMD-345087-C-DR-00-XX-8000_P2.dwg Jun 19, 2015 - 1:59PM 1681 1685

- Notes
1. These drawings are in accordance with the requirements of Section 60 and Schedule 2 of the Flood Risk Management (Scotland) Act 2009.
 2. These drawings are to be read in conjunction with Stonehaven Flood Protection Scheme, Description of Operations, Report Reference 345087_018.
 3. All levels are in metres relative to Ordnance Datum Newlyn
 4. Existing walls will require removal and / or rebuilding, as necessary, to construct the scheme.
 5. Existing structures, as noted, will require removal and rebuilding, as necessary.
 6. Operations shall be carried out in accordance with the Flood Protection Scheme, Description of Operations and Landscaping.
 7. Any outfall discharging into Carron Burn and Burn of Glaslaw identified within the operations, will incorporate appropriate backflow prevention measures.
 8. Information received from statutory undertakers has been used to identify locations of services. Exact locations of these services will be determined during detailed design.

Key to symbols

— Limits of land affected by the operations and of land upon which entry is required for the purpose of carrying out the operations and executing temporary works.

Reference drawings

- | | |
|----------------------------|---------------------|
| MMD-345087-C-DR-00-XX-8001 | FPO GA Sheet 1 of 6 |
| MMD-345087-C-DR-00-XX-8002 | FPO GA Sheet 2 of 6 |
| MMD-345087-C-DR-00-XX-8003 | FPO GA Sheet 3 of 6 |
| MMD-345087-C-DR-00-XX-8004 | FPO GA Sheet 4 of 6 |
| MMD-345087-C-DR-00-XX-8005 | FPO GA Sheet 5 of 6 |
| MMD-345087-C-DR-00-XX-8006 | FPO GA Sheet 6 of 6 |

P2	23/08/15	SS	Flood Risk Management Act Issue	LC	SGR
P1	02/06/15	SS	Preliminary Issue	LC	SGR
Rev	Date	Drawn	Description	Chk'd	App'd



Merry House
16-18 Bank Street
Inverness, IV1 1GY
United Kingdom
T +44 (0)1463 235523
F +44 (0)1463 235523
W www.mottmac.com



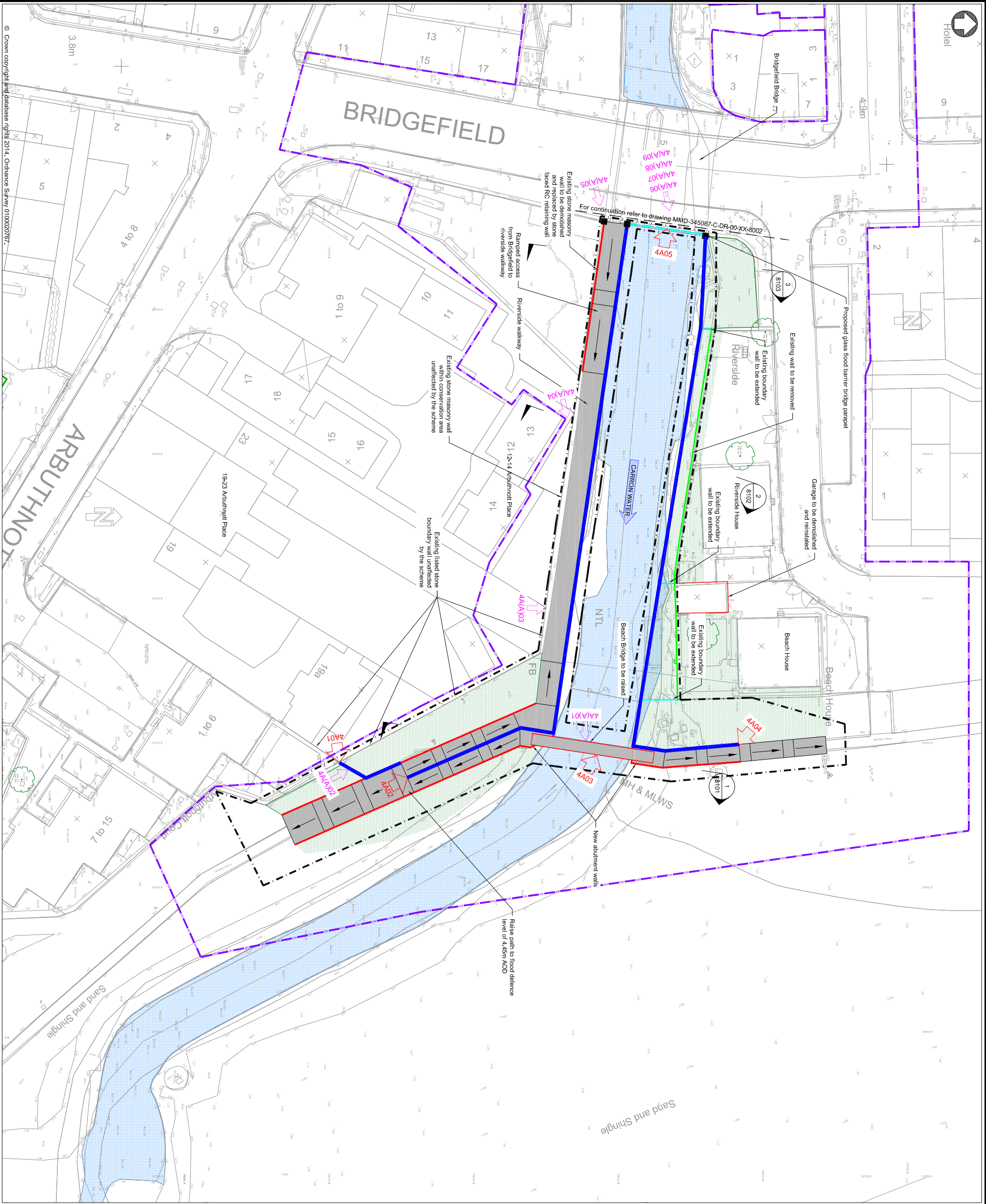
Title

Stonehaven FPS
Flood Protection Operations
Overall Scheme Layout

Designed	DS	DS	Eng check	LC	LC
Drawn	SS	SS	Coordination	LC	LC
Dwg check	DS	DS	Approved	SGR	SGR
Scale at A1	1:1250	PRE	Rev	P2	STD

Drawing Number

MMD-345087-C-DR-00-XX-8000



- Notes
- These drawings are in accordance with the requirements of Section 60 and Schedule 2 of the Flood Risk Management (Scotland) Act 2009.
 - These drawings are to be read in conjunction with Stonehaven Flood Protection Scheme, Description of Operations, Report Reference 345087_018.
 - All levels are in metres relative to Ordnance Datum Newlyn
 - Existing walls will require removal and / or rebuilding, as necessary, to construct the scheme.
 - Existing structures, as noted, will require removal and rebuilding, as necessary, to construct the scheme.
 - Operations along Carron, Water and Burn of Glasgow will be finished with a scheme of planting and landscaping.
 - Any outfall discharging into Carron Water and Burn of Glasgow identified within the operations, will incorporate appropriate backflow prevention measures.
 - Information received from statutory undertakers has been used to identify locations of services. Exact locations of these services will be determined during detailed design.

Key to symbols

--- Limits of Deviation as defined in Description of Operations
Report 345087_018

--- Limits of land affected by the operations and of land upon which entry is required for the purpose of carrying out the operations and executing temporary works.

--- Glass Flood Barrier

--- Flood Wall

--- Flood Wall

--- Flood Gate

--- Self closing barrier

--- Retaining Wall

--- Existing wall to be removed

--- River bed lowering

--- Regraded area

--- Typical water surface

--- Tree to be retained

--- Tree to be removed

--- Flood Operation

--- Ancillary Flood Operation

Reference drawings

MMD-345087-C-DR-00-XX-8000	FPO Overall Scheme Layout
MMD-345087-C-DR-00-XX-8001	FPO GA Sheet 1 of 6
MMD-345087-C-DR-00-XX-8002	FPO GA Sheet 2 of 6
MMD-345087-C-DR-00-XX-8003	FPO GA Sheet 3 of 6
MMD-345087-C-DR-00-XX-8004	FPO GA Sheet 4 of 6
MMD-345087-C-DR-00-XX-8005	FPO GA Sheet 5 of 6
MMD-345087-C-DR-00-XX-8006	FPO GA Sheet 6 of 6

P3	24/06/15	SS	Flood Risk Management Act Issue	LC	SGR
P2	23/08/15	SS	Secondary Issue	LC	SGR
P1	02/06/15	SS	Preliminary Issue	LC	SGR
Rev	Date	Drawn	Description	Chk'd	App'd



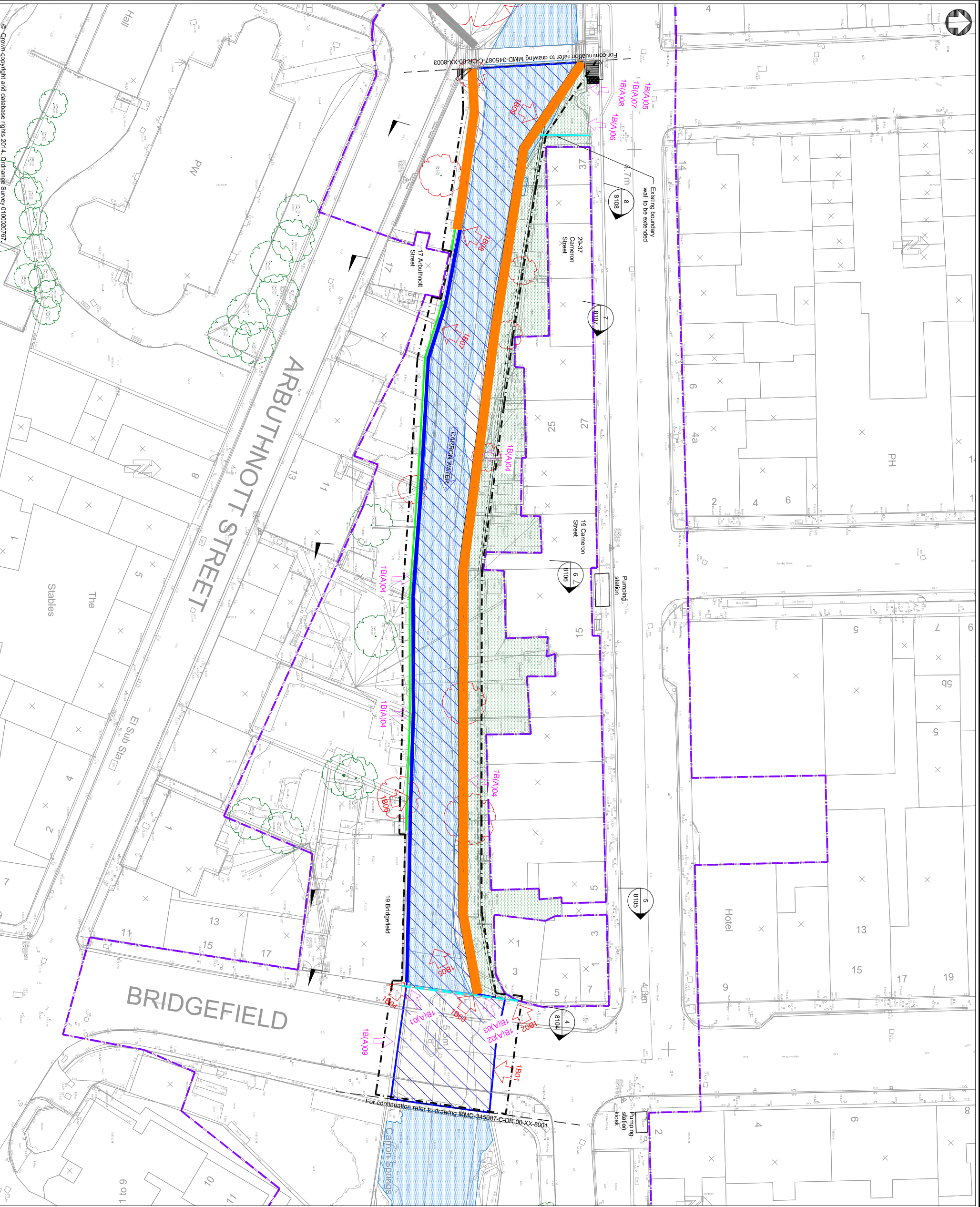
Mott MacDonald
16-18 Bank Street
Inverness, IV1 1QY
United Kingdom
T +44 (0)1463 235523
F +44 (0)1463 235523
W www.mottmac.com



Title
Stonehaven FPS
Flood Protection Operations
General Arrangement
Sheet 1 of 6

Designed	DS	DS	Eng check	LC	LC
Drawn	SS	SS	Coordination	LC	LC
Dwg GCR	DS	DS	Approved	SGR	SGR
Scale at A1	Status	PRE	Rev	P3	STD
1:250					

Drawing Number
MMD-345087-C-DR-00-XX-8001



- Notes
- These drawings are in accordance with the requirements of Section 60 and Schedule 2 of the Flood Risk Management (Scotland) Act 2009.
 - These drawings are to be read in conjunction with Stonehaven Flood Protection Scheme, Description of Operations, Report Reference 345087_018.
 - All levels are in metres relative to Ordnance Datum Newlyn.
 - Existing walls will require removal and / or rebuilding, as necessary, to construct the scheme.
 - Existing structures, as noted, will require removal and rebuilding, as necessary.
 - Operations along Caron Water and Burn of Glaslaw will be finished with a scheme of planting and landscaping.
 - Any outfalls discharging into Caron Water and Burn of Glaslaw identified within the operations, will incorporate appropriate backflow prevention measures.
 - Information received from statutory undertakers has been used to identify locations of services. Exact locations of these services will be determined during detailed design.

Key to symbols

--- Limits of Deviation as defined in Description of Operations
Report 345087_018

--- Limits of land affected by the operations and of land upon which entry is required for the purpose of carrying out the operations and executing temporary works.

--- Glass Flood Barrier

--- Flood Wall

--- Flood Wall

--- Flood Wall

--- Self closing barrier

--- Retaining wall to be removed

--- Existing wall to be removed

--- River bed lowering

--- Regraved area

--- Typical water surface

--- Tree to be retained

--- Tree to be removed

--- Flood Operation

--- Ancillary Flood Operation

Reference drawings

MMD-345087-C-DR-00-XX-8001	FPO Overall Scheme Layout
MMD-345087-C-DR-00-XX-8001	FPO GA Sheet 1 of 6
MMD-345087-C-DR-00-XX-8002	FPO GA Sheet 2 of 6
MMD-345087-C-DR-00-XX-8003	FPO GA Sheet 3 of 6
MMD-345087-C-DR-00-XX-8004	FPO GA Sheet 4 of 6
MMD-345087-C-DR-00-XX-8005	FPO GA Sheet 5 of 6
MMD-345087-C-DR-00-XX-8006	FPO GA Sheet 6 of 6

P3	24/06/15	SS	Flood Risk Management Act Issue	LC	SGR
P2	23/06/15	SS	Secondary Issue	LC	SGR
P1	02/06/15	SS	Preliminary Issue	LC	SGR
Rev	Date	Drawn	Description	Chkd	Appd



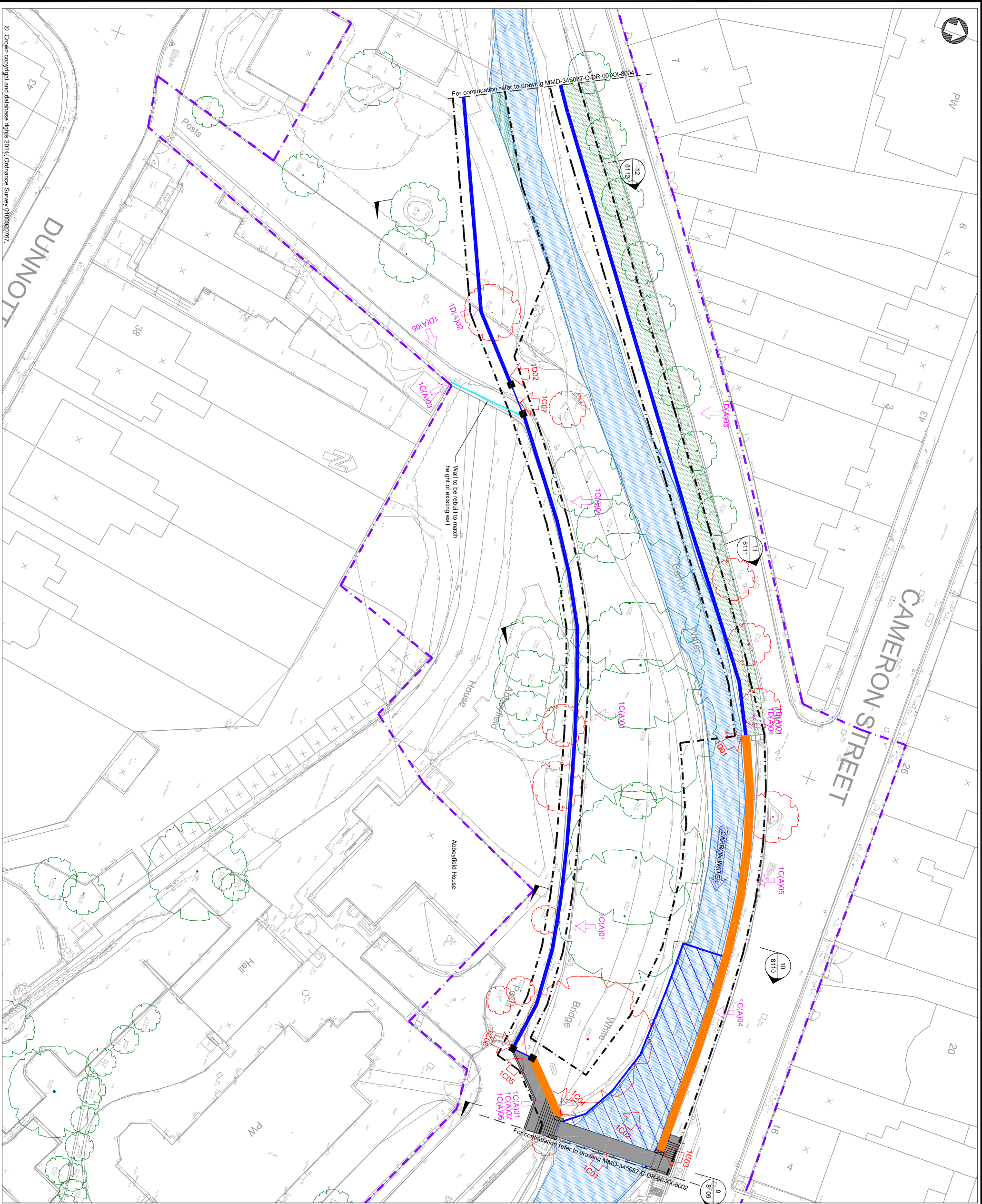
Mott MacDonald
16-18 Bank Street
Inverness, IV1 1QY
United Kingdom
T +44 (0)1463 235523
F +44 (0)1463 235523
W www.mottmac.com



Title
Stonehaven FPS
Flood Protection Operations
General Arrangement
Sheet 2 of 6

Designed	DS	DS	Eng check	LC	LC
Drawn	SS	SS	Coordination	LC	LC
Dwg check	DS	DS	Approved	SGR	SGR
Scale at A1	1:250	PRE	Rev	P3	STD

Drawing Number
MMD-345087-C-DR-00-XX-8002



- Notes
- These drawings are in accordance with the requirements of Section 60 and Schedule 2 of the Flood Risk Management (Scotland) Act 2009.
 - These drawings are to be read in conjunction with Stonehaven Flood Protection Scheme, Description of Operations, Report Reference 345087_018.
 - All levels are in metres relative to Ordnance Datum Newlyn.
 - Existing walls will require removal and / or rebuilding, as necessary, to construct the scheme.
 - Existing structures, as noted, will require removal and rebuilding, as necessary.
 - Construction of the scheme, Water and Burn of Glaslaw will be finished with a scheme of planting and landscaping.
 - Any outfalls discharging into Carron Water and Burn of Glaslaw identified within the operations, will incorporate appropriate backflow prevention measures.
 - Information received from statutory undertakers has been used to identify locations of services. Exact locations of these services will be determined during detailed design.

Key to symbols	
	Limits of Deviation as defined in Description of Operations Report 345087_018
	Limits of land affected by the operations and of land upon which entry is required for the purpose of carrying out the operations and executing temporary works.
	Glass Flood Barrier
	Flood Wall
	Flood Gate
	Self closing barrier
	Retaining Wall
	Existing wall to be removed
	River bed lowering
	Regrated area
	Typical water surface
	Tree to be retained
	Tree to be removed
	Flood Operation
	Auxiliary Flood Operation

Reference drawings					
MMD-345087-C-DR-00-XX-8000		FPO Overall Scheme Layout			
MMD-345087-C-DR-00-XX-8001		FPO GA Sheet 1 of 6			
MMD-345087-C-DR-00-XX-8002		FPO GA Sheet 2 of 6			
MMD-345087-C-DR-00-XX-8003		FPO GA Sheet 3 of 6			
MMD-345087-C-DR-00-XX-8004		FPO GA Sheet 4 of 6			
MMD-345087-C-DR-00-XX-8005		FPO GA Sheet 5 of 6			
MMD-345087-C-DR-00-XX-8006		FPO GA Sheet 6 of 6			
P3	24/06/15	SS	Flood Risk Management Act Issue	LC	SGR
P2	23/06/15	SS	Secondary Issue	LC	SGR
P1	02/06/15	SS	Preliminary Issue	LC	SGR
Rev	Date	Drawn	Description	Chkd	Appd

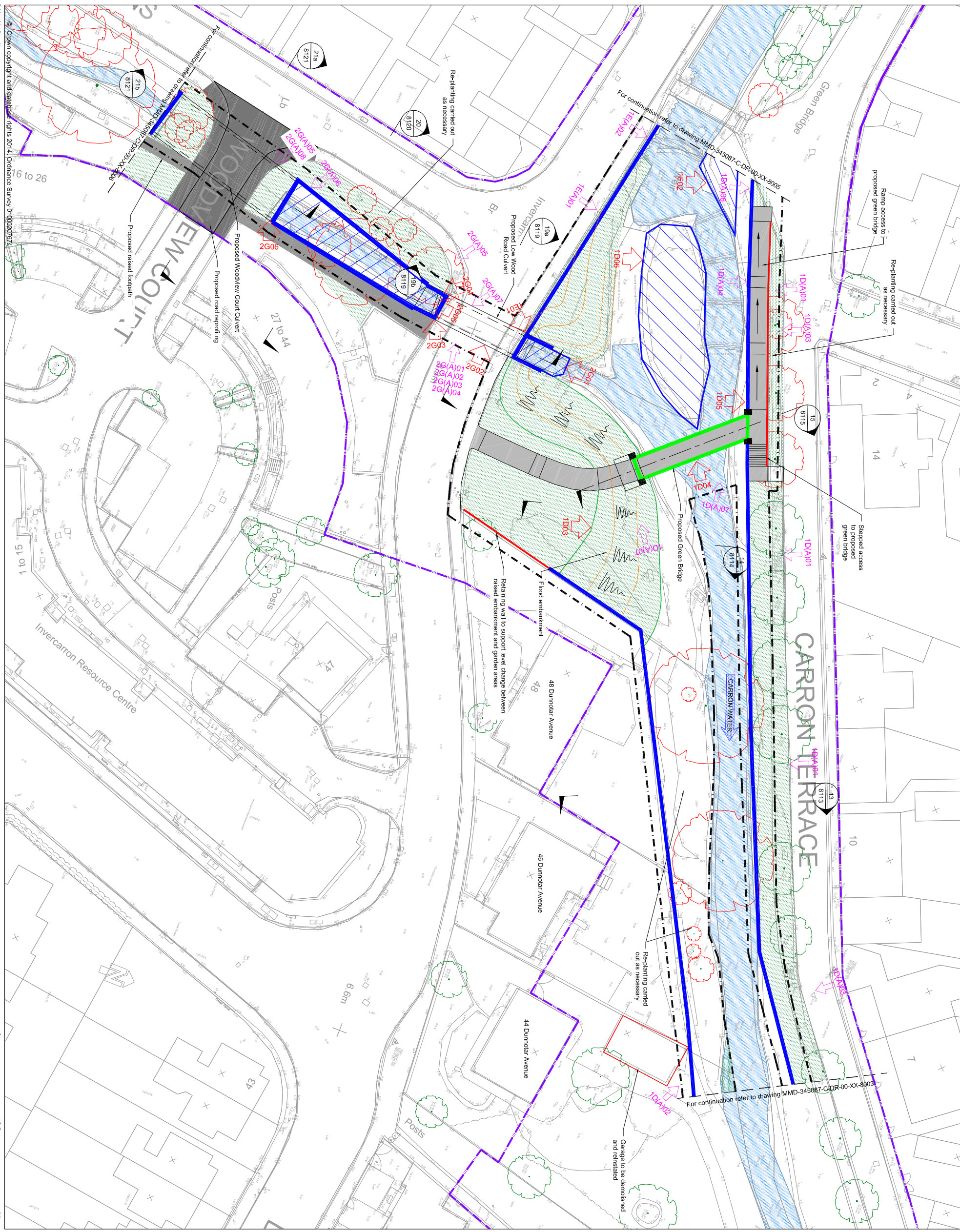


Mott MacDonald
16-18 Bank Street
Inverness, IV1 1QY
United Kingdom
T +44 (0)1463 238323
F +44 (0)1463 238324
W www.mottmac.com



Title
Stonehaven FPS
Flood Protection Operations
General Arrangement
Sheet 3 of 6

Designed	DS	DS	Eng check	LC	LC
Drawn	SS	SS	Coordination	LC	LC
Dwg check	DS	DS	Approved	SGR	SGR
Scale at A1	1:250	PRE	Status	P3	STD
Drawing Number	MMD-345087-C-DR-00-XX-8003				



- Notes
- These drawings are in accordance with the requirements of Section 60 and Schedule 2 of the Flood Risk Management (Scotland) Act 2009.
 - These drawings are to be read in conjunction with Stonehaven Flood Protection Scheme, Description of Operations, Report Reference 345087_018.
 - All levels are in metres relative to Ordnance Datum Newlyn.
 - Existing walls will require removal and / or rebuilding, as necessary, to construct the scheme.
 - Existing structures, as noted, will require removal and rebuilding, as necessary.
 - Operations along Carron Water and Burn of Glasfaw will be finished with a scheme of planting and landscaping.
 - Any outfall discharging into Carron Water and Burn of Glasfaw identified within the operations, will incorporate appropriate backflow prevention measures.
 - Information received from statutory undertakers has been used to identify locations of services. Exact locations of these services will be determined during detailed design.

Key to symbols

--- Limits of Deviation as defined in Description of Operations
Report 345087_018

--- Limits of land affected by the operations and of land upon which entry is required for the purpose of carrying out the operations and executing temporary works.

- Glass Flood Barrier
- Flood Wall
- Flood Gate
- Self closing barrier
- Retaining Wall
- Existing wall to be removed
- River bed lowering
- Regraded area
- Typical water surface
- Tree to be retained
- Tree to be removed
- Flood Operation
- Auxiliary Flood Operation

Reference drawings

MMD-345087-C-DR-00-XX-8000	FPO Overall Scheme Layout
MMD-345087-C-DR-00-XX-8001	FPO GA Sheet 1 of 6
MMD-345087-C-DR-00-XX-8002	FPO GA Sheet 2 of 6
MMD-345087-C-DR-00-XX-8003	FPO GA Sheet 3 of 6
MMD-345087-C-DR-00-XX-8004	FPO GA Sheet 4 of 6
MMD-345087-C-DR-00-XX-8005	FPO GA Sheet 5 of 6
MMD-345087-C-DR-00-XX-8006	FPO GA Sheet 6 of 6

P3	24/06/15	SS	Flood Risk Management Act Issue	LC	SGR
P2	23/06/15	SS	Secondary Issue	LC	SGR
P1	02/06/15	SS	Preliminary Issue	LC	SGR
Rev	Date	Drawn	Description	Chk'd	App'd

Mott MacDonald

Merry House
16-18 Bank Street
Inverness, IV1 1QY
United Kingdom
T +44 (0)1463 233523
F +44 (0)1463 233523
W www.mottmac.com

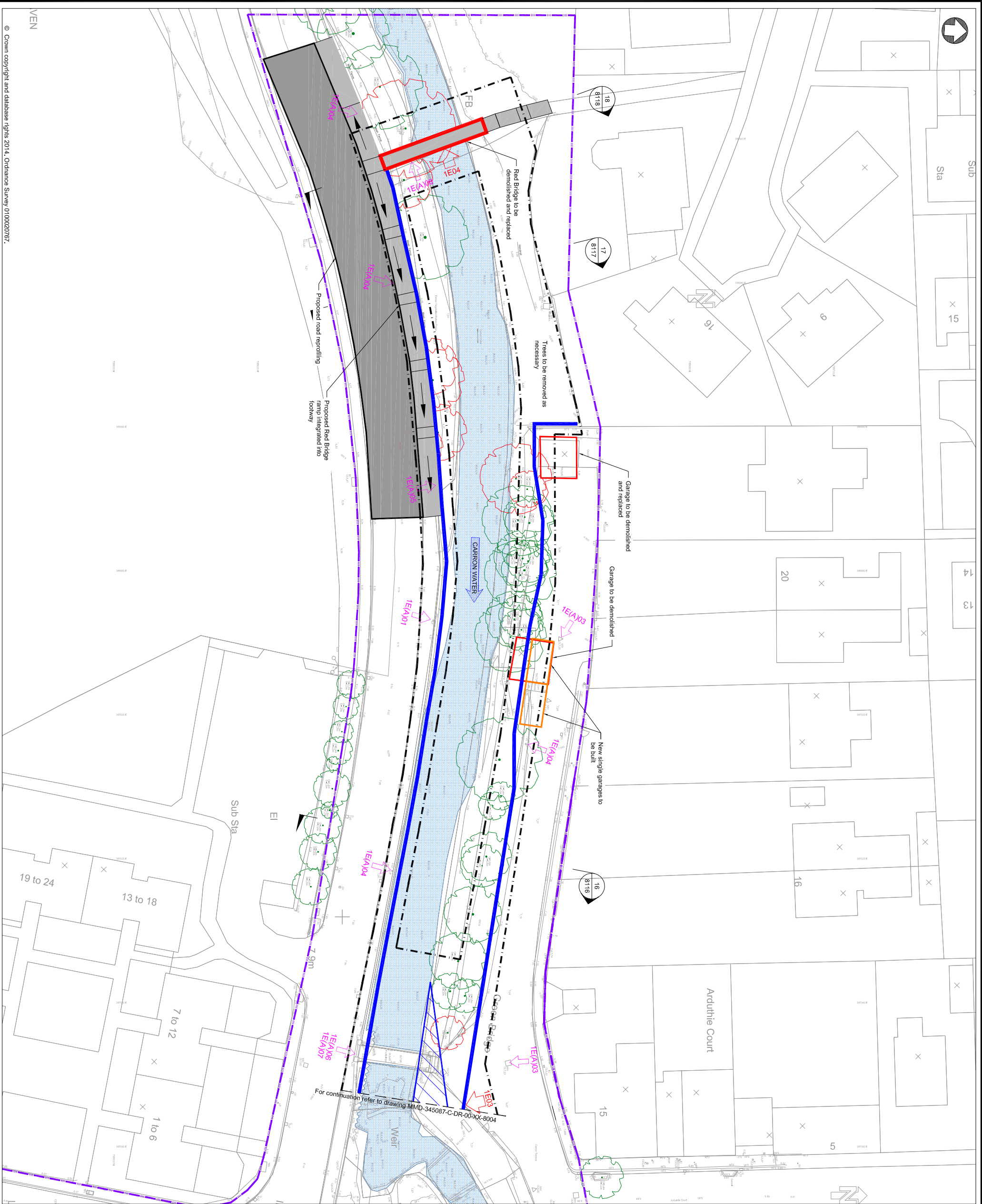
Aberdeenshire COUNCIL

A

Title
**Stonehaven FPS
Flood Protection Operations
General Arrangement
Sheet 4 of 6**

Designed	DS	DS	Eng check	LC	LC
Drawn	SS	SS	Coordination	LC	LC
Dwg check	DS	DS	Approved	SGR	SGR
Scale at A1	Status	PRE	Rev	P3	STD

Drawing Number
MMD-345087-C-DR-00-XX-8004



- Notes
- These drawings are in accordance with the requirements of Section 60 and Schedule 2 of the Flood Risk Management (Scotland) Act 2009.
 - These drawings are to be read in conjunction with Stonehaven Flood Protection Scheme, Description of Operations, Report Reference 345087_018.
 - All levels are in metres relative to Ordnance Datum Newlyn.
 - Existing walls will require removal and / or rebuilding, as necessary, to construct the scheme.
 - Existing structures, as noted, will require removal and rebuilding, as necessary, to construct the scheme.
 - Operations along Carrow Water and Burn of Glaslaw will be finished with a scheme of planting and landscaping.
 - Any outfall discharging into Carrow Water and Burn of Glaslaw identified within the operations, will incorporate appropriate backflow prevention measures.
 - Information received from statutory undertakers has been used to identify locations of services. Exact locations of these services will be determined during detailed design.

Key to symbols

--- Limits of Deviation as defined in Description of Operations
Report 345087_018

--- Limits of land affected by the operations and of land upon which entry is required for the purpose of carrying out the operations and executing temporary works.

--- Glass Flood Barrier

--- Flood Wall

--- Flood Wall

--- Flood Gate

--- Self closing barrier

--- Retaining Wall

--- Existing wall to be removed

--- River bed lowering

--- Regraded area

--- Typical water surface

--- Tree to be retained

--- Tree to be removed

--- Flood Operation

--- Auxiliary Flood Operation

Reference drawings

MMD-345087-C-DR-00-XX-8000	FPO Overall Scheme Layout
MMD-345087-C-DR-00-XX-8001	FPO GA Sheet 1 of 6
MMD-345087-C-DR-00-XX-8002	FPO GA Sheet 2 of 6
MMD-345087-C-DR-00-XX-8003	FPO GA Sheet 3 of 6
MMD-345087-C-DR-00-XX-8004	FPO GA Sheet 4 of 6
MMD-345087-C-DR-00-XX-8005	FPO GA Sheet 5 of 6
MMD-345087-C-DR-00-XX-8006	FPO GA Sheet 6 of 6

P3	24/06/15	SS	Flood Risk Management Act Issue	LC	SGR
P2	23/06/15	SS	Secondary Issue	LC	SGR
P1	02/06/15	SS	Preliminary Issue	LC	SGR
Rev	Date	Drawn	Description	Chk'd	App'd

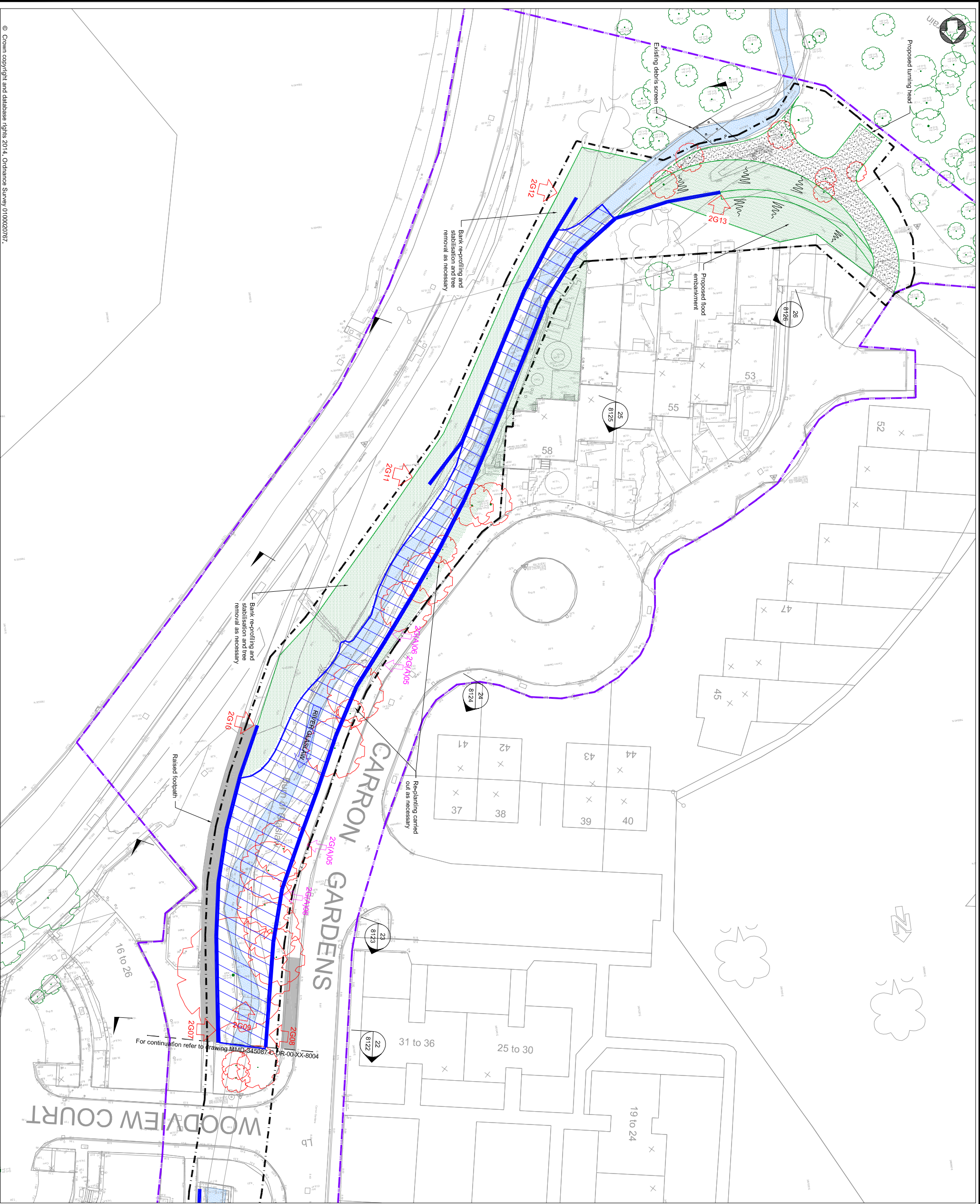


Mott MacDonald
Murray House
16-18 Bank Street
Inverness, IV1 1QY
United Kingdom
T +44 (0)1463 235523
F +44 (0)1463 235523
W www.mottmac.com



Title
Stonehaven FPS
Flood Protection Operations
General Arrangement
Sheet 5 of 6

Designed	DS	DS	Eng check	LC	LC
Drawn	SS	SS	Coordination	LC	LC
Dwg check	DS	DS	Approved	SGR	SGR
Scale at A1	1:250	PRE	Rev	P3	STD
Drawing Number	MMD-345087-C-DR-00-XX-8005				



- Notes
- These drawings are in accordance with the requirements of Section 60 and Schedule 2 of the Flood Risk Management (Scotland) Act 2009.
 - These drawings are to be read in conjunction with Stonehaven Flood Protection Scheme, Description of Operations, Report Reference 345087_018.
 - All levels are in metres relative to Ordnance Datum Newlyn.
 - Existing walls will require removal and / or rebuilding, as necessary, to construct the scheme.
 - Existing structures, as noted, will require removal and rebuilding, as necessary, to construct the scheme.
 - Operations along Carron Water and Burn of Glasgow will be finished with a scheme of planting and landscaping.
 - Any outfall discharging into Carron Water and Burn of Glasgow identified within the operations, will incorporate appropriate backflow prevention measures.
 - Information received from statutory undertakers has been used to identify locations of services. Exact locations of these services will be determined during detailed design.

Key to symbols

— — — — —	Limits of Deviation as defined in Description of Operations Report 345087_018
— — — — —	Limits of land affected by the operations and of land upon which entry is required for the purpose of carrying out the operations and executing temporary works.
— — — — —	Glass Flood Barrier
— — — — —	Flood Wall
— — — — —	Flood Gate
— — — — —	Self closing barrier
— — — — —	Retaining Wall
— — — — —	Existing wall to be removed
— — — — —	River bed lowering
— — — — —	Regrated area
— — — — —	Typical water surface
— — — — —	Tree to be retained
— — — — —	Tree to be removed
— — — — —	Flood Operation
— — — — —	Auxiliary Flood Operation

Reference drawings

MMD-345087-C-DR-00-XX-8000	FPO Overall Scheme Layout
MMD-345087-C-DR-00-XX-8001	FPO GA Sheet 1 of 6
MMD-345087-C-DR-00-XX-8002	FPO GA Sheet 2 of 6
MMD-345087-C-DR-00-XX-8003	FPO GA Sheet 3 of 6
MMD-345087-C-DR-00-XX-8004	FPO GA Sheet 4 of 6
MMD-345087-C-DR-00-XX-8005	FPO GA Sheet 5 of 6
MMD-345087-C-DR-00-XX-8006	FPO GA Sheet 6 of 6

P3	24/06/15	SS	Flood Risk Management Act Issue	LC	SGR
P2	23/06/15	SS	Secondary Issue	LC	SGR
P1	02/06/15	SS	Preliminary Issue	LC	SGR
Rev	Date	Drawn	Description	Chk'd	App'd



Mott MacDonald
16-18 Bank Street
Inverness, IV1 1QY
United Kingdom
T +44 (0)1463 233323
F +44 (0)1463 233323
W www.mottmac.com



Title
Stonehaven FPS
Flood Protection Operations
General Arrangement
Sheet 6 of 6

Designed	DS	DS	Eng check	LC	LC
Drawn	SS	SS	Coordination	LC	LC
Dwg check	DS	DS	Approved	SGR	SGR
Scale at A1	1:250	PRE	Rev	P3	STD

Drawing Number
MMD-345087-C-DR-00-XX-8006