

**DOORS
OPEN
DAYS** 2024

Aberdeenshire 
COUNCIL

Aberdeenshire

DoorsOpenDays2024

Saturday 21st & Sunday 22nd September

find out more online at

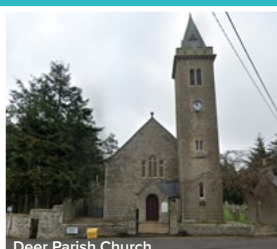
www.doorsopendays.org.uk\aberdeenshire



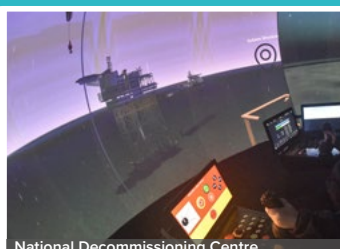
[Aberdeenshire Architecture Heritage Design](#)



Kinnaird Head Castle and Lighthouse



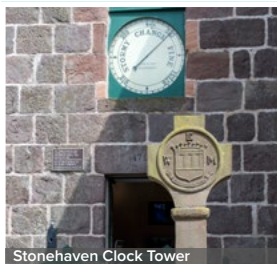
Deer Parish Church



National Decommissioning Centre



Elyza Fraser Mausoleum



Stonehaven Clock Tower



Cairngorm Bothies



HISTORIC
ENVIRONMENT
SCOTLAND

ÀRAINNEACHD
EACHDRAIDHEIL
ALBA

Aberdeenshire
COUNCIL



Welcome to Doors Open Days **Aberdeenshire 2024**

This year's event will be held over two days, **Saturday 21st and Sunday 22nd September 2024**, allowing visitors the best opportunity to visit a wide range of properties and experiences across the length and breadth of Aberdeenshire.

We have an exciting and varied programme with over 50 properties taking part, some for the first time. There will also be tours, exhibitions, and refreshments at many of the venues, hosted by Doors Open Days volunteers.

Come along and join us in celebrating Aberdeenshire's rich heritage!

Doors Open Days is Scotland's largest free annual architectural event. It is coordinated nationally by the Scottish Civic Trust and forms part of European Heritage Days, a joint initiative of the Council of Europe and the European Union alongside Scottish Archaeology Month. Both events are supported by Historic Environment Scotland.

This year's Aberdeenshire event has been organised by Aberdeenshire Council's Historic Environment Team, and coordinated by Clare Tierney.

Our gratitude and thanks go to all those who have generously agreed to open their buildings to make this event possible, and to all the volunteers who have given up their valuable time.

OPENING TIMES

Please note that **not all properties are open on both days**. Please check the opening times of the properties you wish to visit before you travel. Openings may also be subject to unavoidable last-minute changes. For the most up to date information on the buildings taking part, please check the event's national website

<http://www.doorsopendays.org.uk/> or our Facebook page

 <https://www.facebook.com/AberdeenshireArchitectureHeritageDesign/>

With so many buildings to visit across Aberdeenshire on Doors Open weekend, there's something for everyone – what better excuse to explore the region!

With so many buildings to visit across Aberdeenshire on Doors Open weekend, there's something for everyone – what better excuse to explore the region



Deer Parish Church



Beannachar Camphill Community



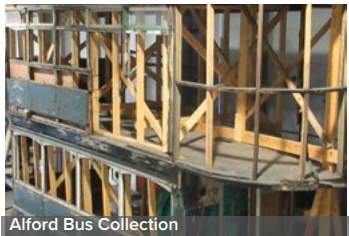
Victoria & Albert Halls



Kinnaird Head Castle & Light House



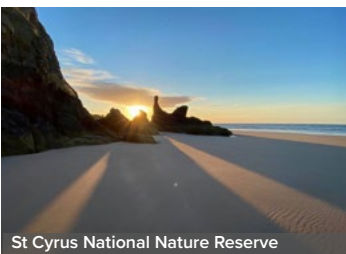
Delgaty Castle



Alford Bus Collection



1 High Shore Banff



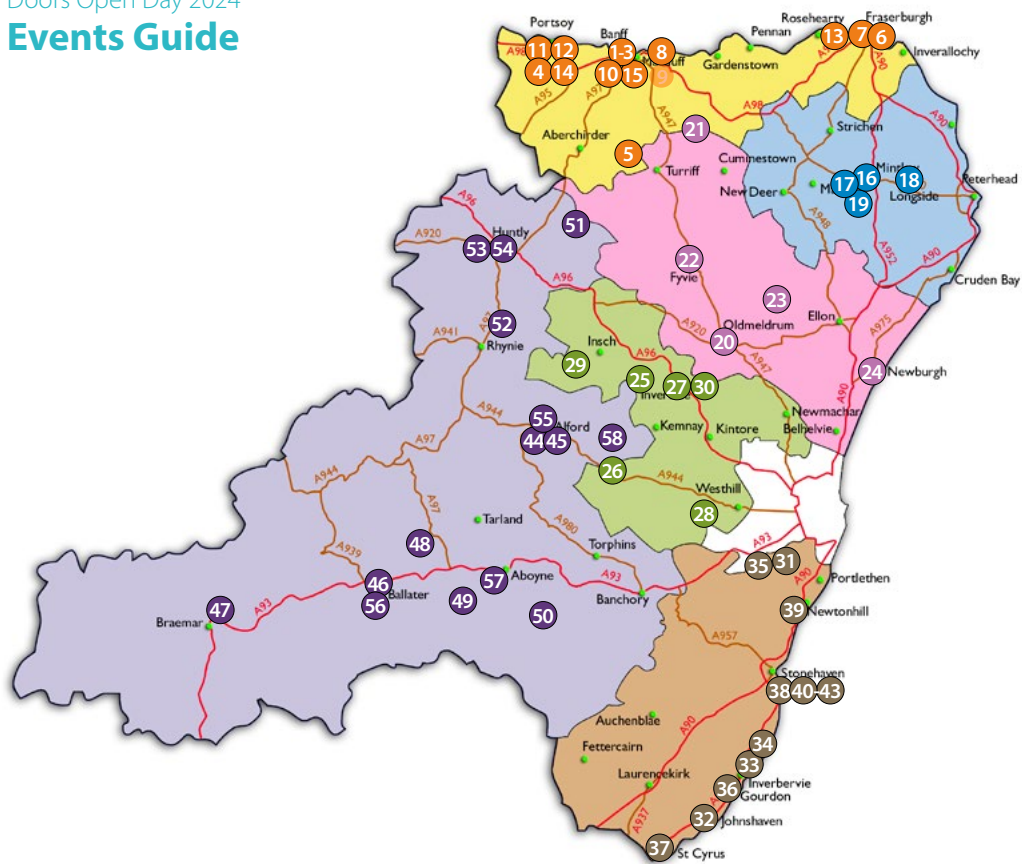
St Cyrus National Nature Reserve



Cairngorm Bothies



Vanilla Ink Smiddy



KEY TO VENUE SYMBOLS



Parking



Events for Children



Refreshments



Hearing Loop



Toilets



Wheelchair Accessible Toilet



Wheelchair Accessible Building



Not an Accessible Building



Limited Access

Please note that visitors entering buildings do so at their own risk.

Children must be accompanied by an adult. None of the participating buildings or organisations are responsible for any accidents or damage that might be incurred.

The owners/custodians of the buildings retain the right to refuse access.

Venue Quick Links

- 1

1 High Shore, Banff (Merchant's House)
- 2

Banff Parish Church
- 3

Duff House Mausoleum
- 4

Durn House
- 5

Forglen Hall
- 6

Fraserburgh South Church
- 7

Kinnaird Head Castle and Lighthouse and The Museum of Scottish Lighthouses
- 8

Macduff Parish Church
- 9

Macduff War Memorial **WITHDRAWN**
- 10

Museum of Banff
- 11

Portsoy Boat Shed
- 12

Portsoy Salmon Bothy
- 13

Sandhaven Meal Mill
- 14

The Granary, Portsoy
- 15

Vanilla Ink The Smiddy
- 16

Aberdeenshire Museums Service
Discovery Centre
- 17

Deer Parish Church
- 18

Longside Parish Church
- 19

The Old Manse, Stuartfield
- 20

Aberdeenshire Libraries Headquarters
- 21

Delgatie Castle
- 22

Fyvie Parish Church
- 23

Tarves Heritage Centre
- 24

The National Decommissioning Centre
- 25

Bennachie Visitor Centre
- 26

Elyza Fraser Mausoleum
- 27

Garioch Heritage Centre
- 28

Garlogie Mill Beam Engine and Turbine House
- 29

Leslie Castle
- 30

The Lodge of St Anthony, Inverurie
- 31

Beannachar Camphill Community
- 32

Benholm and Johnshaven Heritage Museum
- 33

Hallgreen Castle
- 34

Kinneff Old Church
- 35

Maryculter Trinity Church
- 36

Mill of Benholm
- 37

St Cyrus National Nature Reserve
- 38

St James Episcopal Church, Stonehaven
- 39

St Ternan's Scottish Episcopal Church
- 40

Stonehaven Clock Tower
- 41

Stonehaven Community Fire Station
- 42

Stonehaven Lifeboat Station
- 43

Tolbooth Museum
- 44

Alford Heritage Museum
- 45

Alford Valley Community Railway
- 46

Ballater Masonic Lodge
- 47

Braemar Castle
- 48

Cairngorm Bothies
- 49

Chapel of Saint Lesmo
- 50

Finzean Bucket Mill
- 51

Forgue Old Kirk
- 52

Leith Hall
- 53

Number 30, The Square, Huntly
- 54

St Margaret's Church, Huntly
- 55

The Bus Collection at Alford
- 56

The Victoria and Albert Halls, Ballater
- 57

Walled Garden, Ballogie
- 58

'Prehistory in the Garioch' at Monymusk Hall

Our gratitude and thanks go to all those who have generously agreed to open their buildings to make this event possible and to the volunteers who have given up their time.

BANFF & BUCHAN

1 1 High Shore, Banff (Merchant's House)

1 High Shore, Banff, AB45 1DB



Opening Times:

Saturday 21st 10am - 4pm

Sunday 22nd 10am - 1pm

1 High Shore is an original Merchant's house in the centre of Banff, adjacent to the Silversmith's House and the Market Arms; they are three of the oldest houses in Banff, forming a historic grouping. Opposite lies a medieval churchyard.

Merchant's House continues its life as a private family home engulfed with history and architectural detail. Probably dating from before 1675, as dated on the outside, with fortified ground floor and evidence of entry at first floor level.

Each of the three floors offer architectural delights, including a huge fireplace, spiral stone stairs and turret. The courtyard garden offers a fine view of the back of the staircase tower. Guided access will be granted to the attic for the able-bodied, to see the numbered beams, cap room and views across the bay. The ground floor is wheelchair accessible.

Only open to the public on Doors Open Days, the event provides an extraordinarily unique opportunity to glimpse into the history of Banff.



2 Banff Parish Church

High Street, Banff, AB45 1AE



Opening Times:

Saturday 21st 10am - 4pm

Sunday 22nd 10am - 4pm

(open for worship 11am-12pm)

Banff Parish Church originates from 1789 and was designed by Andrew Wilson architect and builder. The iconic spire that can be seen in the landscape was added by William Robertson in 1849. The spire stands majestically on top of a tower constructed in tooled and polished ashlar. The chancel was latter added and the interior altered in 1929. A small chapel was created at the rear of the church in 1994. The pulpit, font, communion table and stained glass in the chancel were all gifted in 1929. Take a moment out of your busy Doors Open Days adventure to stop and contemplate within the walls of this magnificent category B listed church in the heart of Banff.

www.banffparishchurchofscotland.co.uk

[f www.facebook.com/p/Banff-Parish-Church-of-Scotland-100064391693731](https://www.facebook.com/p/Banff-Parish-Church-of-Scotland-100064391693731)



3 Duff House Mausoleum

Wrack Woods (1 mile south of Duff House),
Banff, AB45 3SX



Opening Times:

Saturday 21st CLOSED
Sunday 22nd 10.30am - 3.30pm

Built on the site of a Carmelite burial ground, in an extremely peaceful and picturesque location above the river Deveron, this “Gothick” structure houses the remains of the first five Earls (starting in 1705) and other Duff family members, with several interesting memorials. Outside is a tomb that used to be in Banff cemetery and was falsely used by the 2nd Earl to claim a family connection to Robert the Bruce – with an interesting, linked story involving the Carmelite monks from the nearby “Mount Carmel” (also worth a visit, a further 300m along the track). The mausoleum also contains several excellent examples of quite early Coade stone, an 18th century artificial stone that can weather extremely well – even here after more than 200 years in what is perhaps the most northerly example. Available at the Mausoleum will be leaflets with a map showing walks around Wrack Woods highlighting key features. A separate leaflet with the history of the Mausoleum will also be available, to supplement the information the stewards on the day get a chance to talk about!

Subject to weather and good fitness of visitors, ad hoc walks (circa 20 mins) may be conducted to Mount Carmel, Hospital Island and St Mary’s Well.

Main parking is near Duff House; most visitors are then asked to walk to the Mausoleum (about 1 mile which will be signed), either along a track or the lower footpath. There is space adjacent to the Mausoleum for just 2 cars, reserved for disabled parking. The Mausoleum is fully wheelchair accessible outside. To get to the flat floor inside there are 3 steps.

www.friendsofduffhouse.org.uk

[f friendsofduffhouse](https://www.facebook.com/friendsofduffhouse)



4 Durn House

Durn Road, Portsoy, AB45 2XT



Opening Times:

Saturday 21st 11am - 4pm

Sunday 22nd 11am - 4pm

Nestled on the outskirts of the old fishing town of Portsoy lies the enchanting late 18th century striking Georgian mansion, originally home to the Menzies of Durn, now used as a guesthouse, restaurant, and wedding venue. Magnificent both inside and out, Doors Open Days allows visitors to take a guided tour of the building with talks and tales on the history of this unobtrusively majestic building. In addition, visitors will be allowed to sneak peek into the behind the scenes day-to-day operations of the hotel business.

Come for the history, stay for the hospitality!

www.durnhouse.com

[f durnhouseportsoy](#)

[ig newdurnhouse](#)



5 Forglen Hall

Forglen, Turriff, AB53 4JL



Opening Times:

Saturday 21st CLOSED

Sunday 22nd 10am - 4pm

2024 is the Centenary Year of the listed Rural Hall built in 1924 by members of the community in Forglen who were gifted a stained-glass window depicting Jacob's Dream designed by Clayton and Bell, world famous manufacturers of religious stained-glass windows. The window was restored in 2019 by Linda Cannon, art conservator from Glasgow.

There is a War Memorial within the grounds and a Role of Honour and plaque to Piper Findlater in the Hall.

Listen to a talk on the history of the building. Refreshments and activities for children will be available.

[f forglenhall](#)



6 Fraserburgh South Church

Seaforth Street, Fraserburgh, AB43 9BD



Opening Times:

Saturday 21st 10am - 4pm

Sunday 22nd 10am - 4pm

Opened in 1810 for worship, the architect John Bridgeford Pirie along with Arthur Clyne entered a design competition resulting in the commission of Fraserburgh South Church. Located within the Fraserburgh Town conservation area the category B listed church demonstrates a fine example of a blend of white and pink granite and although some historians describe the work as 'French Gothic' it is a freestyle architecture of the type that emerged from the High Victorian Era of 1880's and 1890's. The tall spire which acts as a landmark on the skyline is detailed with lancet windows and a wooden coffered roof. The interior reflects much of the art Nouveau style that Pirie incorporated into his designs. The navel-like 'patera' can be seen as a stylised rose or sunflower. The gallery front is decorated with iron sunflowers. The church hosts the 'Moses Stone' which was first sited at Fraserburgh University in the late 1590's. The interior of the church was refurbished in 2007.

 www.facebook.com/p/Fraserburgh-South-Church-100068663553739



7 Kinnaird Head Castle and Lighthouse and The Museum of Scottish Lighthouses

Kinnaird Head, Stevenson Road, Fraserburgh, AB43 9DU



Opening Times:

Saturday 21st CLOSED

Sunday 22nd 10am - 4pm

Come and visit Kinnaird Head Castle and Lighthouse, the very first lighthouse on mainland Scotland (1787) and visit the purpose-built museum which sits alongside. The museum tells the great story of the Northern Lighthouse Board, the engineers who built the lights and the keepers who tended them. **It is a story of skill, courage, technical genius, and brilliant organisation.**

Both 'The Museum of Scottish Lighthouses' and 'Kinnaird Head Castle and Lighthouse' will be free to visit on Doors Open Days, an opportunity not to be missed.

Tickets to partake in a tour of the lighthouse will be available for collection in the museum building. Visitors are advised to park their vehicles in the museum car park while they attend both venues.

www.lighthousemuseum.org.uk



8 Macduff Parish Church

Church Street, Macduff, AB44 1UN



Opening Times:

Saturday 21st 10am - 4pm

Sunday 22nd 10am - 4pm

(Sunday service 11am-12pm)

The parish church occupies a prominent position in the community of Macduff. On a hill overlooking the harbour, the building was opened in 1805. With its Italianate square tower, domed roof and cupola added in 1865, it is a landmark for boats approaching the town. Points of architectural interest include the stained-glass windows installed in 1922 to the memory of local people who died in the World War 1. These were created by the City Glass Company of Glasgow and displayed at the Royal Academy in London. More recently stained-glass windows by the artist Jennifer-Jane Bayliss, were added to the vestibule to commemorate the links with Malawi. The organ was built in 1903.

The building has been continually updated and renovated to meet the needs of an active congregation. On Sunday, visitors in the morning will be able to attend the regular service of



worship that starts at 11am.

The graveyard surrounding the church is also worth a visit with many interesting gravestones as well as several Commonwealth Commission Graves.

Over the weekend guides will be available to talk about the church building and the work of the congregation.

www.macduffparishchurch.org.uk

 [MacduffParishChurch](https://www.facebook.com/MacduffParishChurch)



9 Macduff War Memorial

The Knowles, Macduff, AB9 1JG



Opening Times:

Saturday 21st 10am - 4pm

Sunday 22nd 1pm - 4.30pm

Macduff War Memorial is a striking octagonal tower standing approximately 21 meters in height and 5 meters wide across the base. Standing tall and proud, the Knowles majestically overlooking Macduff and the coastline beyond. The names of the fallen are cut into panels of Kemnay granite. Internally the tower is divided into storeys with cement floors and a cement stair leading to the top. The work was carried out by 2 experienced masons namely Alexander Brown, Turner Street, Macduff then aged 79 years and Magnus Johnstone, High Street, Macduff then aged 68 years, built as a tribute to the young men they had known. The view from the top is spectacular on a clear day.

Climbing the tower is at a person's own risk and requires care.



10 Museum of Banff

High Street, Banff, AB45 1AE



Opening Times:

Saturday 21st 10am - 4pm

Sunday 22nd 1pm - 4pm

The present museum and library building were built in 1902. Banff Preservation and Heritage Society currently runs the Museum in partnership with Aberdeenshire Museums Service. The building also houses the town's Library. The museum can claim to be the oldest museum in Scotland north of Perth.

The exhibits show a vast range of interesting artefacts from the neolithic age to the modern day. They reflect life in Banffshire and show some stunning examples of our historical past in Banff and Macduff including a varied collection of Banff Silver.

There is a lift to allow access to the first floor.

www.bphsmob.org.uk



11 Portsoy Boat Shed

90 Church Street, Portsoy, AB45 2QR



Opening Times:

Saturday 21st Closed

Sunday 22nd 12pm - 4pm

In the late 1800s Portsoy had several active boat builders and sail making in the Sail Loft on the Back Green. In 2004, the Boat Festival Trust began its policy of working with children to teach and revive basic principles of wooden boat building. Through outreach projects coordinated by the Boat Festival Trust, children have created over 60 dinghies and several small boats called Curraghs and a North Sea Faering and a St Ayles Skiff.

It was subsequently identified that a permanent premises was essential to the continued teaching of boat crafting skills and Portsoy Maritime Heritage gifted derelict buildings on the Old Harbour to Portsoy Community Enterprise, who thanks to funding of half a million pounds, transformed the building into the Boatshed.

The Boatshed, built upon the ruins of a former boatshed/store, was fully renovated and opened in 2015. It is now home to a qualified boatbuilder and group of enthusiastic boatbuilding volunteers who use the purposely designed workshop space, equipped with tools, for community boatbuilding projects and school boatbuilding sessions, ensuring the skills of traditional boatbuilding remain active – come along and see them at work!

www.portsoyboatshed.org

 [PortsoyBoatshed](https://www.facebook.com/PortsoyBoatshed)

 [PortsoyBoatshed](https://www.instagram.com/PortsoyBoatshed)



12 Portsoy Salmon Bothy

Links Road, Portsoy, AB45 2SS



Opening Times:

Saturday 21st 10am - 4pm

Sunday 22nd 10am - 4pm

The Salmon Bothy was a working Salmon Bothy until the 1990s. It was renovated and opened in 2009 as a small museum and a community space called 'Upstairs at the Bothy'. Each of the three ice chambers of the Bothy contain new exhibitions. Chamber 1 is devoted to the salmon fishing industry telling its story and exhibiting the artefacts. It has a new children's area and an area for viewing pictures of a bygone era. Chamber 2 tells the story of Portsoy with its famous 17th century harbour and the associated industries which developed because of the trading nature of the town. Chamber 3, housing the most recent exhibits displaying the flora and fauna of the area and the unique geology found in Portsoy



including the famous Portsoy marble. Come see for yourself on Doors Open Days

www.salmonbothy.org

 [PortsoySalmonBothy](https://www.facebook.com/PortsoySalmonBothy)



13 Sandhaven Meal Mill

Main Street, Sandhaven, AB43 7EB



Opening Times:

Saturday 21st 10am - 5pm

Sunday 22nd 10am - 5pm

Sandhaven Meal Mill is a fine example of an early 19th century rectangular mill and kiln. The mill is unique in that all the machinery survives including the electric motor that powered the mill in its last years. It also has a built-in hinged top desk that was used by the miller.

Visitors will be treated to an exhibition of farming and fishing lives over the years, including guided tours by the mill curator. This is a fascinating way to learn how oatmeal used to be ground in this typical Scottish meal mill. Guided tours will be provided, there is also a seating area where a DVD of the mill will be shown for those who are unable to access all 3 floors.

This is a Doors Open Days experience not to be missed!



14 The Granary, Portsoy

Shorehead, Portsoy, AB45 2PB



Opening Times:

Saturday 21st 12pm - 4pm

Sunday 22nd 12pm - 4pm

The North East Scotland Preservation Trust (NESPT) has been left six historic, listed buildings at Portsoy Harbour in the will of the late Tom Burnett-Stuart. The category B listed Granary will be open together with the Portsoy Marble Shop, which is located within the category A listed Marble Warehouse designed by John Adam.

The category B listed Granary will contain a small exhibition about Tom Burnett-Stewart, the legacy, the work of the NESPT and proposals for bringing the buildings back into productive use. It will be possible to view the category B listed Marble Workshop, the category C listed Rag Warehouse and the category B listed houses at 6/7 Shorehead from the outside.



15 Vanilla Ink The Smiddy

Old Market Place, Banff, AB45 1GE



Opening Times:

Saturday 21st 10am - 4pm

Sunday 22nd 10am - 4pm

The Smiddy was converted into a blacksmith in 1902 and is a part of Banff's rich history. It was restored as part of the Conservation Area Regeneration Scheme (CARS) to become a centre of excellence for silversmithing and jewellery.

The Smiddy is now the second social enterprise jewellery school in Scotland. The lovely and fully kitted Smiddy workshop was established to provide more opportunities for people to learn jewellery making and silversmithing. The owners are very proud to continue to support and encourage local craft, heritage and skills in the beautiful town of Banff.

For Doors Open Days, Vanilla Ink The Smiddy is delighted to welcome visitors to come along and look around the workshop, find out how they operate and the experiences that they offer. Guests can drop in and look around the gallery and into the workshops to see jewellery and objects being made.

Staff will be more than happy to talk through what they are working on and give insights into the world of working and making with metal.

www.vanillainkthesmiddy.co.uk

 [vanillainkthesmiddy](https://www.facebook.com/vanillainkthesmiddy)

 [vanillainkthesmiddy](https://www.instagram.com/vanillainkthesmiddy)



BUCHAN

16 Aberdeenshire Museums Service Discovery Centre

Station Road, Mintlaw, AB42 5EE



Opening Times:

Saturday 21st 11am - 4.30pm

Sunday 22nd CLOSED

(pre-booked tours only)

Aberdeenshire Museums Service, part of Live Life Aberdeenshire, cares for and manages the historic and artistic collections owned by Aberdeenshire Council. The Service currently operates two museums in Aberdeenshire, Banchory Museum and the Aberdeenshire Farming Museum at Aden Country Park. The collections which are not currently on display at these venues are kept at this state-of-the-art museum storage facility.

The building also houses the conservation labs, walk-in freezer, photo studio, and staff offices. The Museum Service currently looks after more than 250,000 objects ranging from social history, natural history, archaeology, photographic collections and more. Our Doors Open Day tour will showcase this facility and give visitors a behind-the-scenes look at the work we do and the wonderful artefacts in our care.



Aberdeenshire Museums Service is currently working on developing a new museum of Aberdeenshire in Peterhead, opening 2027. Part of the successful “Cultural Tides” Levelling Up bid to UK government, the new museum will feature treasures from across Aberdeenshire and thematically tie together our area through the idea of Cultural Connections, both within Aberdeenshire and through Aberdeenshire’s connections to other parts of the world such as the Baltic, North America, and Africa.

Visits by pre-booked guided tour only. Museum staff will take visitors on a behind-the-scenes tour of the facility. Please note all personal belongings and jackets must be left in our secure storage area before beginning the tour. Please leave valuables at home/in your vehicle.

Tours last 60 minutes starting every half hour.
Tour times: 11am, 11:30am, 12pm, 12:30pm, 1pm, 1:30pm, 2pm, 2:30pm, 3pm, 3:30pm

To book email: museums@aberdeenshire.gov.uk or phone 01467 536544.

www.livelifeberdeenshire.org.uk/museums

 [AberdeenshireMuseumsService](https://www.facebook.com/AberdeenshireMuseumsService)



17 Deer Parish Church

Kirkgate, Old Deer, Peterhead, AB42 5LJ



Opening Times:

Saturday 21st 10am - 4pm

Sunday 22nd 10.30am - 4pm

(Sunday Service 10.30am - 11.30am)

The church is the parish church of Deer. The present building was constructed in the 18th century on top of the ruins of a previous medieval building, the remains of which (choir part) are located immediately behind the church. The church, along with the nearby Deer Abbey is associated with the 10th century illustrated Gospel manuscript, the Book of Deer (presently held in Cambridge University Library and exhibited lately in Aberdeen Art Gallery).

There will be an exhibition by local heritage groups, namely The Book of Deer Project, the Buchan Heritage Society, the Buchan Field Club, the local churches, Friends of Aden Park and the Friends of New Aberdour Pilgrimage and Heritage initiative. These groups are coming together to form the Deer Heritage Initiative, a project to re-purpose the church into a heritage centre.



18 Longside Parish Church

Inn Brae, Longside, AB42 4XN



Opening Times:

Saturday 21st 2pm - 4pm

Sunday 22nd 2pm - 1pm

Longside Parish Church enjoys an elevated location within the village and can be seen from many directions. It dominates the village skyline with its impressive rectangular silhouette designed by John Smith and built in 1835/36. The west gable is capped by a bellcote. The adjoining old parish church, a roofless ruin, dates from 1620 and is accessed through a lychgate of 1705. Some notable monuments are in the surrounding graveyard.

Over the weekend guides will be on hand to provide information, tours of the graveyard, in addition to displays of Communion ware and photographs of Longside Parish past and present. Refreshments and music will also be provided, a great venue to take a break in your day's adventures!

www.longsidekirk.org.uk

 [Longsidekirk](https://www.facebook.com/Longsidekirk)



19 The Old Manse, Stuartfield

4 Windhill Street, Stuartfield, AB42 5DR



Opening Times:

Saturday 21st 10am - 4pm

Sunday 22nd 10am - 4pm

(pre-booked tours only)

Stop off at the Old Manse where a warm welcome awaits visitors who are interested to find out more about the history of the 215-year-old Manse. Visitors will be greeted within the Manse, which is now a private residence, by the owner and will be enthralled by his traditional storytelling. The tales will include images, illustrations and video covering the origin of the church and manse and the lives of some of the ministers, concentrating particularly on the first minister, James Robertson and his children, who later in life achieved tremendous success! You will also delve into the lives of the many occupants of The Old Manse, where odd coincidences exist between the first inhabitant and the existing one! The storytelling will take place in one of the rooms of the house, which can cater for a maximum of 6 people at a time.



A Doors Open Days must, as cited by previous visitors:

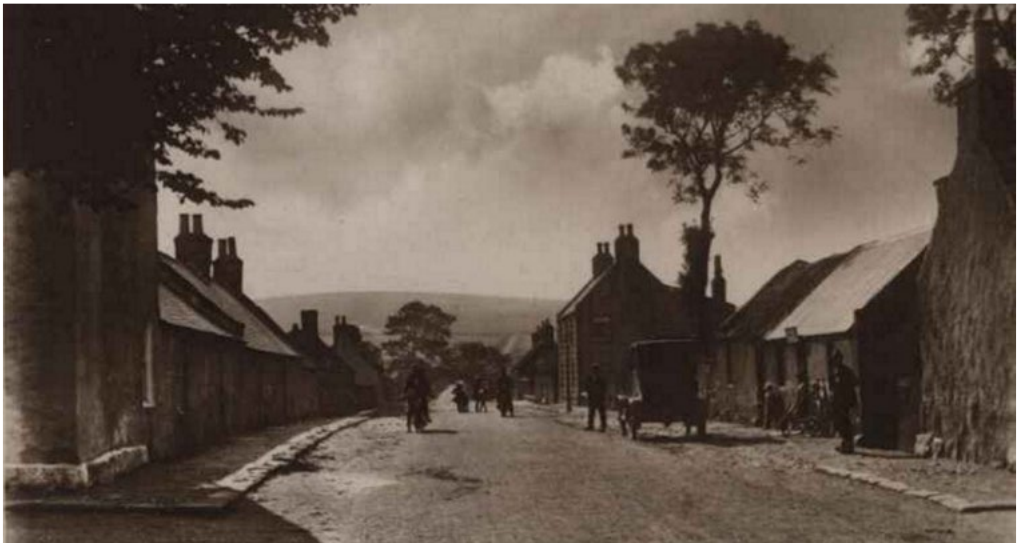
"It was the best hour we have spent in a long while."

"A fabulous insight into some fascinating local history, brought to life brilliantly."

"The effort put into the research was evidently visible in the slides. We loved it!

Booking required. The talk is approx. 45 minutes long and should be booked in advance by either phoning 01771624412 or 07855537824 or by email – ablo.home@gmail.com

Tour times: 10am, 11.30am, 1pm, 2.30pm



FORMARTINE

20 Aberdeenshire Libraries Headquarters

Meldrum Meg Way, Oldmeldrum, AB51 0GN



Opening Times:

Saturday 21st 10am - 4pm

Sunday 22nd CLOSED

Live Life Aberdeenshire Libraries facility is a purpose-built headquarters with the local public library on site. The building is the central distribution point for the circulation of books and resources to the 32 libraries across Aberdeenshire. This working warehouse is the hub of the service, also providing resources to primary and academy schools, HMP Grampian, Care Homes, and to our Doorstep Delivery customers.

Headquarters is also home to Live Life Aberdeenshire's Local Studies centre which has a wealth of resources available to those with an interest in exploring their local and community heritage, including a collection of local themed books, newspapers, photographs, maps, and many resources to support genealogy research.

Over the weekend an excellent opportunity will

be made available to purchase stock withdrawn from the catalogue, both non-fiction and fiction. There will be print books, audio book and CDs, so come along and grab a bargain. Drop-in anytime between 10am and 4pm.

In addition to the book sale, library headquarters will also be offering the following activities:

Bookbug Sessions: This activity is for Early Years age group. Event times: 10.30am, 11.30am, 1.30pm, 2.30pm (30-minute sessions)

Library Tours: Find out what happens behind the scenes at library headquarters and how we distribute our books across Aberdeenshire. Event times: 10.30am, 11.30am, 1.30pm, 2.30pm (45-minute sessions)

Booking required – book online at
www.livelifeaberdeenshire.org.uk/libraries

Digital Library Demonstrations and Local Studies drop-ins: Drop-ins will be running throughout the day

www.livelifeaberdeenshire.org.uk/libraries

 [AberdeenshireLibraries](https://www.facebook.com/AberdeenshireLibraries)

 [onceuponashire](https://twitter.com/onceuponashire)



21 Delgatie Castle

Delgatie, Turriff, AB53 5TD



Opening Times:

Saturday 21st 10am - 4pm

Sunday 22nd 10am - 4pm

A worthwhile visit, Delgatie Castle dates from 1030 and until 1997 was the home of the late Captain Hay of Delgatie. The Castle has mostly been in Hay hands since it was taken from the Earl of Buchan after the Battle of Bannockburn in 1314. There is a wonderful connection to Mary Queen of Scots as she resided here for three days after the Battle of Corrichie in 1562.

The turnpike staircase, composed of a series of steps followed by one or more 90-degree turns, is reputed to be the widest in Scotland. Delgatie Castle is also home to some of the finest painted ceilings in Scotland dating from 1592 and 1597 and they are believed to depict the people who lived in the Castle at the time.

Visitors to the castle will also have the opportunity in Scotland to view the monument to the Animals of War here at Delgatie Castle.

During the event visitors will be permitted Self-guided tours throughout the castle with information boards provided in the rooms.

delgatiecastle.com

 [DelgatieCastle](https://www.facebook.com/DelgatieCastle)



22 Fyvie Parish Church

Beech Row, Fyvie, AB53 8PB



Opening Times:

Saturday 21st 1pm - 4pm

Sunday 22nd CLOSED

There has been a worshipping community in the village of Fyvie for over 1000 years. The Church is thought to have been founded by monks who evangelised Aberdeenshire in the 10th century. The Priory of Fyvie (now marked by a Cross) was a sub-Priory of the Abbey of Arbroath and monks took Services in the Church until the Reformation. Evidence of a Pre-Reformation Church may be seen in the graveyard. Part of the congregation 'went out' at the Disruption and formed a Free Church at Woodhead which closed in 1960 when the Churches reunited.

The present Church was built in 1808 and in 1902 the Chancel was added together with the 'Laird's Laft', the organ, the Vestry and the Session Room. The crowning glory of the Chancel is our unique East Window by Louis Comfort Tiffany and depicts the Archangel Michael on the Wheel of Time. The Church including galleries has seating for 1000.

Knowledgeable guides will be on hand to show visitors around and answer any questions.

 [Friends-of-Fyvie-Church-1038552509550934/](https://www.facebook.com/Friends-of-Fyvie-Church-1038552509550934/)



23 Tarves Heritage Centre

1 The Square, Tarves, AB41 7GX



Opening Times:

Saturday 21st 10am - 4pm

Sunday 22nd 10am - 1pm

The Tarves Heritage Centre has made its home in an old Victorian school house in the heart of the Aberdeenshire conservation area of Tarves village. Within the heritage centre visitors will have the opportunity to experience what a Victorian schoolroom would have look liked as a replica of the room as it was in 1881 when it first opened to both boys and girls, has been created.

Within the Tarves Heritage Centre you will also find the Corbert Room which contains extensive memorabilia and displays from bygone days reflecting local, rural life and social history.

Over the weekend volunteer guides will be on hand to inform your visit. There will also be the chance to dress up in period clothing and



play with children's toys from the Victorian era, writing with slates and pencils and pen and ink exercises. All perfect photo opportunities!

www.tarvesheritage.org.uk

 [Tarves-Heritage-Project-148012528226901](https://www.facebook.com/Tarves-Heritage-Project-148012528226901)

 [tarvesheritageproject](https://www.instagram.com/tarvesheritageproject)



24 The National Decommissioning Centre

Main Street, Newburgh, AB41 6AA



Opening Times:

Saturday 21st 10am - 4pm

Sunday 22nd CLOSED

(pre-booked tours only)

The National Decommissioning Centre (NDC) is a multimillion-pound research and development complex located in Newburgh Aberdeenshire. The centre works in partnership with industry, regulators, and other key stakeholders to transform the decommissioning of energy assets and support the sector's transition to net zero emissions.

The NDC's project portfolio is multi-disciplinary and covers engineering, environmental, economic, and regulatory aspects. The NDC is home to a unique state-of-the-art simulator – a walk-in 9m diameter, 300-degree visual immersive environment with 4 control stations providing real-time and real-physics simulations. Other advanced facilities at the centre include a high-power laser, indoor water immersion tank, hydrostatic pressure chamber and several large capacity environmental chambers.

On the day visitors will receive a brief introduction/presentation to the NDC, followed by a guided tour and demonstration of the walk-in marine simulator – attendees will have the opportunity to operate the control stations and a simulated activity – and other facilities including the indoor immersion tank, hyperbaric testing, and environmental chambers.

There will be displays and films highlighting research/projects at NDC.

Activities for children, e.g. simulator, pressure test, kitchen science, drawing and colouring, will run throughout the day on a drop-in basis.

Introductory presentation followed by tours of simulator and facilities (90min)

Tour times: 10.30am, 12.30pm, 2.30pm

Booking required, please email NDC Administrator Fiona Barr to book:

f.i.barr@abdn.ac.uk

www.ukndc.com



[decomcentre](#)



[showcase/thendc](#)



GARIOCH

25 Bennachie Visitor Centre

Pitcaple, Inverurie, AB51 5HY



Opening Times:

Saturday 21st 10am - 4.30pm

Sunday 22nd 10am - 4.30pm

The result of a design competition, the circular building of the Visitor Centre reflects the historic hill fort on the dominant peak of Mither Tap. The south-facing high windows allow natural light and solar warmth into the building. The building uses natural materials to reflect the woodland setting and the drystane dyking heritage of the area.

The Visitor Centre is managed and maintained by the Bennachie Centre Trust, a voluntary organisation and registered charity. The Centre, which is open daily April-October, provides a focus for visitors to discover Bennachie and increase their understanding and enjoyment of the social, cultural and natural history of the area. We provide exhibition space, educational materials, multi-media interpretation, and act as a focus for public events and activities as well as community initiatives. Entry is fully accessible and free, as are most events and activities. Our facilities include toilets (open all year round), a community room, refreshments, and a gift shop.

www.bennachievisitorcentre.org.uk

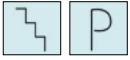
 [bennachievisitorcentre](https://www.facebook.com/bennachievisitorcentre)

 [bennachie_visitor_centre](https://www.instagram.com/bennachie_visitor_centre)



26 Elyza Fraser Mausoleum

Old Cluny Kirkyard, Cluny, Sauchen, AB51 7RS



Opening Times:

Saturday 21st 2pm - 4pm

Sunday 22nd 2pm - 4pm

The Mausoleum was built in 1808 for Miss Elyza Fraser, the owner of Castle Fraser (now a National Trust for Scotland property). It was designed by her friend the architect James Byers of Tonley, a noted Scottish architect of the 18th Century, founder member of the Royal Society of Edinburgh and a prominent Jacobite.

Miss Elyza Fraser died in 1814 and is buried in her Mausoleum along with several generations of her family, the last interment being in 1946.

Now more than 200 years old, the Elyza Fraser Mausoleum sits within Cluny Kirkyard is a category A listed building. The North East Scotland Preservation Trust (NESPT) own the Mausoleum and are developing a future restoration project in partnership with the Friends of the Elyza Fraser Mausoleum.

On the day Members of the Friends of the Elyza Fraser Mausoleum will be on hand to talk about the building and answer any questions you may have, a valuable opportunity to find out more about the work the group undertake.

This building is about to undergo restoration. Please check the website for the latest information.

www.nespt.org/portfolio/elyza-fraser-mausoleum



27 Garioch Heritage Centre

Loco Works Road, Inverurie, AB51 4FY



Opening Times:

Saturday 21st 10am - 4pm

Sunday 22nd 10am - 4pm



The Garioch Heritage Centre sits in the renovated Carriage and Wagon Workshop, part of the former Inverurie Locomotive Works. Closed in 1969, it now has a new lease of life as home for the Garioch Heritage collections.

The Centre tells the story of life in the Garioch from the early 20th century to the present day, shedding light on the domestic and working lives of local people. The building in which our collection is housed is a product of the national rail network developed throughout the second half of the 19th century. It facilitated the extension of people's social and economic horizons.

On site there is also a gift shop, café and activities to amuse younger visitors. Visitors can research local history and browse the Society's extensive collection of photographs and archive material in the library.

For Doors Open Days visitors can enjoy a guided tour with experienced volunteers and hear about growing up in the Garioch. Tour times: 11am, 2pm

Booking required. Book online at

gariochheritage.co.uk/events

 [GariochHeritage](https://www.facebook.com/GariochHeritage)

 [GariochHertiCen](https://twitter.com/GariochHertiCen)

28 Garlogie Mill Beam Engine and Turbine House

Garlogie, Skene, AB32 6SA



Opening Times:

Saturday 21st 10am - 4pm

Sunday 22nd 10am - 4pm

Garlogie is the site of a 1799 wool spinning mill which contains the oldest steam engine in Scotland still in its original location. The engine dates from the 1830's but incorporates an 1805 Boulton and Watt cast iron beam. A 1923 72kW hydroelectric power station is also to be seen. The surviving mill buildings are Category A listed. You will be able to see around the beam engine, turbine and mill site. Guides from the Garlogie Beam Engine Trust will be on hand to explain the operation of the equipment and the mill's plans for the future.

This venue never fails to please. An exhibition in the Garlogie Village Hall will explain the history of the site and how waterpower drove the Mill over several centuries. A short and pleasant walk up the track adjacent to the Leuchar Burn to see the recently demolished dam and the site of the past mill lades is also available.

Teas and light refreshments will be served.

<https://garlogie-engine.org.uk>

 [garlogie.engine/](https://www.facebook.com/garlogie.engine/)



29 Leslie Castle

Leslie, Insch, AB52 6NX



Opening Times:

Saturday 21st CLOSED

Sunday 22nd 10.30am - 3.45pm

(pre-booked tours only)

Leslie Castle was one of the last great Baronial castles to be built in Aberdeenshire in 1661, incorporating the original home of the Leslie Clan, a wooden motte and bailey, later replaced by a stronger stone building.

Falling into disrepair in the 19th century; the roof was lost, gradually becoming more of a ruin until it was purchased by architect David Leslie in 1979. He spent 10 years restoring the castle and ran it as a boutique hotel for a decade before it became a private residence. In 2018 the castle changed hands again and now welcomes overnight guests.

The Gadie Burn runs parallel to the approach to Leslie Castle and would have been diverted to form a moat around the castle during its early period and contributes to its strategic position in relation to the hills, rivers, and routes of Aberdeenshire to the extent it is celebrated in traditional song. The Back O'Bennachie (also known as Where Gadie Rins) is a poem which has been put to song and rearranged very many times. The original author is unknown but is believed to date back to the early 1600s and despite its snappy rhythm it tells a sad story of a lass who was twice married but both husbands met untimely deaths.

Teas/coffees/home-bakes/souvenirs available at a cost.

Over the weekend 40min Guided Tours of the castle by the Baroness of Leslie, including both ancient and modern history of the building.

Booking required. Tours last 40min, maximum of 12 people in each group.

Tour times: 10.30am, 11.30am, 1pm, 2pm, 3pm

Booking link: www.eventbrite.co.uk/e/972350936827

www.leslie-castle.com

[f leslie.castle.guesthouse](#)

[@lesliecastle1](#)



30 The Lodge of St Anthony, Inverurie

22 High Street, Inverurie, AB51 3XQ



Opening Times:

Saturday 21st 10am - 4pm

Sunday 22nd 10am - 4pm

The Masonic Lodge of St Anthony can be dated back to one of the oldest buildings in Inverurie, with its Membership and Minutes of meetings being recorded as far back as 1790. This Lodge has a particularly strong community presence and a continually active membership.

Within the Lodge walls are housed many treasures not often seen by members of the public, including many murals, pictures and Regalia Displays.

During the Doors Open Days event, lodge guides will be available to answer questions on the picture gallery of Masonic Events and Exhibition of Masonic Regalia on display. Refreshments will be available.

www.stanthony154.co.uk



KINCARDINE & MEARN'S

31 Beannachar Camphill Community

Banchory-Devenick, AB12 5YL



Opening Times:

Saturday 21st 10am - 4pm

Sunday 22nd CLOSED

Beannachar (formerly Banchory House) is a large mansion house on the South Deeside Road, designed by John Smith, renowned Aberdeen architect, and completed in 1839. It is now home to a thriving Camphill community for young adults with additional support needs, offering both residential and day services.

Beannachar is located near the northern foot of the ancient route linking Aberdeen to the south: Causey Mounth. At the time that the mansion was built, the owners were deeply connected to leading figures and major current themes in society: the reforms of the kirk; the growth of scientific research and the interest in anthropology and archaeology.

Since 1979 the main link and connection has been with the Camphill communities, both local and worldwide, and through its daily life and work with countless local individuals and organisations.

In 1996 one of the residential houses won an Aberdeenshire architectural award.

Tours of the grounds and beautiful walled garden, and the different workshops will be open to visitors, with products and produce available for sale.

An experience not to be missed including a café, BBQ, live music, children's activities, tombola, and video of current community life.

www.beannachar.co.uk

www.facebook.com/p/Beannachar-Camphill-Community-100082857541672



32 Benholm and Johnshaven Heritage Museum

The Lifeboat House, Fore Street, Johnshaven, DD10 0EU



Opening Times:

Saturday 21st 10am - 4pm

Sunday 22nd 10am - 4pm

Benholm and Johnshaven Heritage Hub Museum is located in the centre of the historic fishing village of Johnshaven within the Old Lifeboat House which was established in 1891. Run by a dedicated group of volunteers who are passionate about preserving the history and heritage of our local area, the museum offers visitors a fantastic hands-on visitor experience telling the story and history of Benholm and Johnshaven.

Johnshaven has an interesting history and was recently featured in an episode of BBC's Villages by the Sea. This year our exhibition tells the stories of the bravery of the crews of the Johnshaven lifeboats, the Coastguard, and the Rocket Life-Saving Brigade.

Johnshaven's past is intrinsically linked to the sea. In the early days of the 18th century Johnshaven was one of the largest and busiest harbours in Scotland. In 1722 Johnshaven had 26 working fishing boats supporting the families of the parish and boats were coming in from Europe to trade. In the past, the people of the village often witnessed the power of the sea and saw ships being wrecked on a regular basis. The dangers of this stretch of rocky coastline were recognised and by 1891 the first Johnshaven lifeboat, 'Meanwell of Glenbervie', was housed in the Lifeboat House – which is now Johnshaven Heritage Museum.

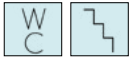
Benholm and Johnshaven Heritage Society received funding from Aberdeenshire Council's Coastal Communities Fund to help curate our latest exhibition. 2024 marks the 200th anniversary of the RNLI and as part of our exhibition we tell some of the stories of the four Johnshaven lifeboats alongside information about the Coast Guard and Rocket Life-Saving Brigade. Benholm and Johnshaven Heritage Museum will be open longer during Doors Open Days to allow visitors to view our exhibition, entry is free and our friendly volunteers will be there to answer any questions. We also have a dedicated children's area with child friendly information, activities and a scavenger hunt to help keep children entertained.

www.facebook.com/Johnshavenheritagehubmuseum



33 Hallgreen Castle

King David Drive, Inverbervie, DD10 0PE



Opening Times:

Saturday 21st 10am - 5pm

Sunday 22nd 10am - 5pm

Situated in the Burgh of Inverbervie overlooking the Bay is Hallgreen Castle. The castle dates from the 14th century and has also received various extensions and modifications over the years, but the core building survives mostly intact. The castle is set in 4 acres of grounds and is 3 storeys high. Old gun loops are visible in the walls.

Doors Open Days 2023 will offer the unique opportunity for visitors to catch a glimpse within the walls of this modified 14th century castle currently occupied as a private residence. An art exhibition will be held in the Great Hall and the Knights of Monymusk will be holding demonstrations of medieval combat technique and traditional equipment and weaponry within the castle gardens.

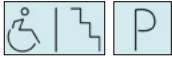
Unfortunately, the castle is not suitable for wheelchair access due to stairs on all levels. Minimal parking is available at the venue and visitors are requested to park at the beach carpark and enjoy the short walk up to the castle.

www.facebook.com/HallgreenCastle



34 Kinneff Old Church

Kinneff, DD10 0TJ



Opening Times:

Saturday 21st 10am - 4pm

Sunday 22nd 10am - 4pm

Kinneff Old Church, founded in the 13th century, holds a very important story in the history of Scotland. In 1652 Oliver Cromwell's forces ran rampant over Scotland, Cromwell's intent being to capture and destroy the Scottish Crown Jewels – The Honours of Scotland – by that time housed in Dunnottar Castle. The minister of Kinneff Church, James Grainger and his wife, hatched a plan to smuggle the jewels out of the castle and take them to the Church where they kept them safely hidden for 9 years, until Charles II returned to the throne.

Come and visit this beautiful building over the weekend, the Trustees will be on site to give detailed accounts of the history of the Old Church and the graveyard and to answer any questions.

www.kinneffoldchurch.co.uk



35 Maryculter Trinity Church

Kirkton of Maryculter, AB12 5FS



Opening Times:

Saturday 21st 10am - 4pm

Sunday 22nd 10am - 4pm

(Sunday Service 10.30am - 11.30am)

Taking part for the first time in Doors Open Days, Maryculter Trinity Church, formerly Maryculter Parish Church, was renamed following the coming together of Banchory-Devenick, Cookney and Maryculter parishes. The history is extensive in relation to this fine category B listed church with the earliest parish being created in 1163 and Maryculter parish having reported links to the Knights Templar.

The current church building was built in 1786-87, the dates cast on the old bell. Throughout its life the church has been much altered by several extensions in 1882, 1959/60 and 2006 with work carried out through 2016/17 to modernise the existing building yet still respecting the history, character and integrity of the original place of worship.

Over the weekend members of the congregation will be on hand to talk about the history and renovations done in the Church to allow the building to function successfully within its community. Visitors can read about the history and view a display of interviews with people who hold roles within the Church, see the fine stained-glass windows and find out what goes on here at Maryculter Trinity Church.

Refreshments will be made available.

www.marycultertrinitychurch.org.uk

 [Maryculter Trinity Church](https://www.facebook.com/MaryculterTrinityChurch)



36 Mill of Benholm

Benholm, Montrose, DD10 0HT



Opening Times:

Saturday 21st CLOSED

Sunday 22nd 12pm - 4pm

This is a category A Listed waterwheel meal mill museum recently taken into the ownership by the community organisation, Mill of Benholm Enterprise.

Mill of Benholm was central to the rural network, being a gathering place for farmers, crofters and locals. It sits at the junction of the coastal paths and the old coach road on the Benholm Conservation Hamlet.

During Doors Open Day, visitors can explore the grounds surrounding the mill and discover how water from the burn is directed into the mill



pond, from where it turns the mill wheel, which works each of the machines required to process the oatmeal. An experience not to be missed, a truly wonderful and educational venue.

<http://millofbenholm.scot/>

 [benholmmill](#)

 [millofbenholm](#)

 [millofbenholm](#)



37 St Cyrus National Nature Reserve

The Old Lifeboat Station, Nether Warburton, St Cyrus, DD10 0AQ

From Montrose, head north on the A92 coastal road. St Cyrus NNR is signposted on the right, immediately after the Northwater Bridge over the Esk. Follow the single-track road for 1.5 miles to the car park and visitor centre.



Opening Times:

Saturday 21st 10am - 4pm

Sunday 22nd 10am - 4pm

The windswept, storm-battered dunes of St Cyrus National Nature Reserve (NNR) might seem a little inhospitable. Winter storms and salty winds wreak havoc along the coastline, but natural barriers of inland cliffs and a seaward ridge of sand dunes protect the St Cyrus grasslands from the ravages of the weather. The result is a small strip of warmth nestled on the north-east coast.

This is one of the richest and most diverse reserves in Britain. In summer it is awash with wildflowers and a haven for insects. There are

many species of breeding birds, including meadow pipit, stonechat and skylark. In winter, large numbers of waders, ducks, geese and swans visit the estuary.

Whether your interest is birds, botany or butterflies and moths, you'll find plenty of interest at any time of year. Or just come for a walk and enjoy the sea views. One of the best ways to see the reserve is to explore the paths or walk along the extensive sandy beach.

Over the weekend visitors will be able to 'meet the ranger' and visit the information stall. On Sunday there will also be a fantastic Storyteller.

 [stcyrusnnr](https://www.facebook.com/stcyrusnnr)

 [stcyrusnnr](https://www.instagram.com/stcyrusnnr)

www.nature.scot/enjoying-outdoors/visit-our-nature-reserves/st-cyrus-national-nature-reserve



38 St James Episcopal Church, Stonehaven

Arbuthnott Street, Stonehaven, AB39 2JB



Opening Times:

Saturday 21st 10am - 4pm

Sunday 22nd 10am - 4pm

St James Episcopal Church is a quality example of a Grade A listed building. Although the church's website provides a comprehensive collection of images, videos and information about the building, nothing can come close to the majestic of scale, detailing, beauty and peace that visitors will experience as they step through the grand church doors. A memory that will stay with you forever and a perfect example of how our built heritage can affect our emotions.

The church is home to the 'Priests and Pipes' showcasing many unique historical artefacts, explaining the history of the Episcopal Church and of John Wardle, the noted organ builder who was choirmaster here for 58 years. The exhibition includes interactive displays, and a demonstrator organ, which anyone can sit down and play!



On the Saturday there will be a coffee and cake morning in the church hall from 10am to 12.30pm. There will be tea/coffee available in the church throughout the weekend.

www.stjames-stonehaven.org.uk

[f StJamesStonehaven](#)



39 St Ternan's Scottish Episcopal Church

Muchalls, AB39 3PP

St Ternan's is located on the Causey Mounth Road to the west of the A92. Turn off the A92 opposite Muchalls village on the road signposted to Cookney. The church is approx. 500 yards along this road.



Opening Times:

Saturday 21st 10am - 3pm

Sunday 22nd 1pm - 3pm

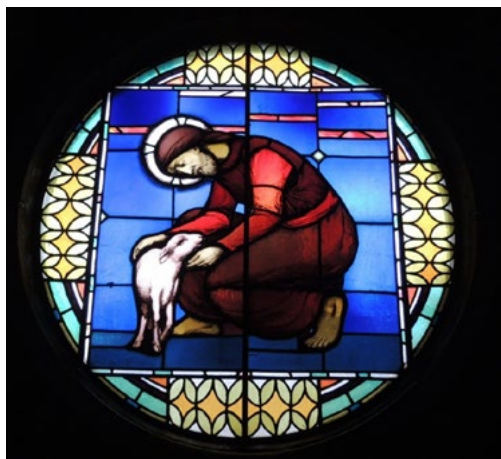
(Sunday Service 10.30am)

St Ternan's is the oldest church in the Diocese of Brechin. The centre section was built in 1829/31 replacing older buildings that were located in the grounds of Muchalls Castle. Later additions were made, including a gallery (since removed) and the lengthening of the nave to accommodate larger congregations. The last major change in 1865 came with the building of the chancel.

At this time "The Episcopal Chapel at Muchalls" (note Muchalls Castle/estate not Muchalls village)

as it had always been known adopted a new constitution and became St Ternan's Scottish Episcopal Church. St Ternan's is a lovely church, most of the original pews are still in place from the days it could seat 250 of a congregation.

A delicate stained-glass window can be appreciated in the East wall above the altar depicting Jesus as the Good Shepherd. The font has a unique history; found by Bishop Alexander Penrose Forbes (Diocese of Brechin 1847-1875) surviving as a trough on a farm adjacent to Inverbervie, it has skilful stone carvings around its circumference.



Sadly, the fishing villages of North Kincardineshire went into decline and their populations moved to urban areas to seek alternative forms of employment, resulting in a drop of congregational numbers. In 1885 St Ternan's had a congregation of 200 people; by 1910 their number had decreased to 15 as the population of the fishing villages of Skateraw, Stranathro, Findon and Portlethen declined.

During the event visitors will be able to view an exhibition of historical documents and a display of chalices and other and other religious paraphernalia currently still used during our services.

www.stternans.co.uk

 [SaintTernans](https://www.facebook.com/SaintTernans)

40 Stonehaven Clock Tower

The Cross, Stonehaven, AB39 2JT



Opening Times:

Saturday 21st 10am - 4pm

Sunday 22nd 10am - 4pm

The Stonehaven Clock Tower stands tall and proud at the Cross and can be seen from around the town. The costs of the original 1790 build were met from the Common Good Fund and the sole purpose of the building was to contain the Town Clock for the local community. In 1894 the tower was heightened, and the clock was raised to its present position at the top of the square sandstone tower. Above the doorway is a large barometer, dated 1852, which was of immense benefit and used regularly by the local fishermen. In addition, the Clock Tower was also the site of one of the many public water supplies in the 19th century. Sadly, the Tower fell into disrepair but a major refurbishment in 2015, which gained the annual Conservation Award from the Aberdeen Society of Architects, has led its re-opening as a tourist attraction.

Please note that the Clock Tower will not be staffed on Doors Open Days.



41 Stonehaven Community Fire Station

Mill Of Forest Lane, Stonehaven, AB39 2LN



Opening Times:

Saturday 21st 10am - 4pm

Sunday 22nd CLOSED

The community fire station, purpose-built and opened in 1980, provides a base for fire service personnel to respond to emergencies, train and engage with the community. It is currently home to 18 on-call firefighters. A further appliance bay was added in the late 1990's which now accommodates two emergency fire engines and a water carrier, 1 of just 4 located in the whole of Scotland! The crew based in Stonehaven are often called to a wide range of incidents, such as road traffic incidents, domestic and commercial fires, flooding, and water rescue to name but a few!

The visit is suitable for all ages and will give a great insight into what we do – visitors can use the hose, wear some of the gear and chat with our local crews. Guided tours of the station will take place every hour. Safety advice and free Home Fire Safety visits will also be offered.

Come visit us and get the full experience of what it takes to become a firefighter.



42 Stonehaven Lifeboat Station

Old Pier, The Harbour, Stonehaven, AB39 2JU



Opening Times:

Saturday 21st CLOSED
Sunday 22nd 10am - 1pm

RNLI Stonehaven Lifeboat Station includes both the station crew shed and the boat shed. The boat shed sits adjacent to the harbour and is as old as the harbour itself.

On the day visitors will be welcomed into the station crew shed and can view the kit and crew room. The lifeboat crew will be on hand to tell you about their job and all that it entails. Visitors can then wander round the historic harbour of Stonehaven to the boat shed and experience the scale of the working lifeboat, a fantastic opportunity for children.

*Please note that the crew will be on call that day and so may need to attend emergencies.

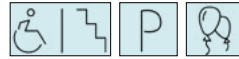
<https://rnli.org/find-my-nearest/lifeboat-stations/stonehaven-lifeboat-station>

 [RNLIStonehaven](#)



43 Tolbooth Museum

Old Pier, Stonehaven Harbour, AB39 2JU



Opening Times:

Saturday 21st 10am - 4pm
Sunday 22nd 10am - 4pm

The Tolbooth is the oldest building in Stonehaven, dating from the late 16th century and is category A listed. The original use of the stone building was that of courthouse and prison. Today the ground floor contains a museum that showcases the building's turbulent past and Stonehaven's rich history. Visitors can examine the model of the Earth's earliest known air breathing animal found at nearby Cowie, reminisce over past domestic and rural life, read informative panels on notable past individuals and events, view old photographs of the town or study the local geology. This year our resident mannequin is dressed to celebrate the 200th anniversary of the RNLI.

www.stonehaventolbooth.co.uk

 [stonehaventolbooth](#)

*Please note – the 1st floor contains the Tolbooth Restaurant which is not part of Doors Open Days.



MARR

44 Alford Heritage Museum

3 Mart Road, Alford, AB33 8BZ



Opening Times:

Saturday 21st 10am - 4pm

Sunday 22nd 10am - 4pm

The Alford Heritage Museum, a popular attraction in the town, is housed in the A Listed cattle auction market building in the centre of Alford. First opened in 1905, the building has operated as a museum since 1991 following the mart's closure in 1986.

Through exhibits and displays, the Museum aims to preserve local heritage and educate people regarding the traditional and historic way of life in rural Donside. A wealth of social and agricultural history is contained within the collection.

The museum is entirely operated by the time and commitment of volunteers. Historic Environment Scotland describe it as "an exceptionally rare example of a largely intact livestock mart of timber construction in Scotland."

Over the weekend visitors will be welcomed into the museum for free!

www.alfordheritagemuseum.com

 [AlfordHeritageMuseum](https://www.facebook.com/AlfordHeritageMuseum)



45 Alford Valley Community Railway

Main Street, Alford, AB33 8AD



Opening Times:

Saturday 21st 10am - 4pm

Sunday 22nd 10am - 4pm

Alford Valley Community Railway (AVCR) is a narrow-gauge railway and a much-loved community attraction that runs from the centre of Alford Village to Haughton Country Park and back. Alford Valley Charitable Community Benefit Society (AVCCBS) was formed to get this attraction back up and running and received significant funding to do so. We are a community railway operated by the community for the community. We will be delighted to welcome the public along to see how we have spent our funding.

There will be displays within the Station Building, behind the scenes tour of the Engine Shed and an opportunity to have a ride on the train from the village centre to Haughton Country Park and back. A Doors Open Days experience not to be missed!

Train times: 11am, 12pm, 1pm, 2pm, 3pm

www.avcr.org.uk

 [AlfordValleyRailway](https://www.facebook.com/AlfordValleyRailway)



46 Ballater Masonic Lodge

19-21 Queens Road, Ballater, AB35 5NJ



Opening Times:

Saturday 21st 11am - 4pm

Sunday 22nd CLOSED

The building, category C listed and located within its own grounds in the Braemar conservation area and was purpose-built for a Masonic Lodge. The building is a fine example of pink and grey granite with distinctive Aberdeen bonding. Visitors will be able to experience the original Masonic rooms essentially unchanged by entering the main hall, view photographs and browse through membership records and minute books all going back over 100 years. An exciting glimpse beyond the doors of this historic society where 200-year-old manuals and Minute books will be on display for Doors Open Days.

Lodge members will be on hand to welcome visitors over the weekend.



47 Braemar Castle

Braemar, AB35 5XR



Opening Times:

Saturday 21st 10am - 4pm

Sunday 22nd 10am - 4pm

(last entry 3.30pm)

The jewel in Braemar's crown, Braemar Castle is a stunning example of a traditionally built 17th century stronghold, a demonstration of a clan's wealth and standing. Now in the hands of the local community, who work tirelessly to ensure the Castle is safeguarded for future generations, the Castle is a shining beacon of pride for everyone in Braemar.

Explore the rooms as they were left in the 1950's when the last inhabitants vacated this amazing building. A most unique and utterly charming piece of history. We look forward to welcoming you!



Audio tour, self-guided leaflet and open-guiding tours will be available over the weekend.

www.braemarcastle.co.uk

 [braemarcastle](https://www.facebook.com/braemarcastle)

 [braemar.castle](https://www.instagram.com/braemar.castle)



48 Cairngorm Bothies

Logie Coldstone, Aboyne, AB34 5PZ



Opening Times:

Saturday 21st CLOSED

Sunday 22nd 12.30pm - 4pm

Cairngorm Bothies, holders of a Green Tourism's GOLD AWARD, offer woodland retreats within a 100-year-old Scots pine forest to eco-conscious guests seeking self-catering dog-friendly holidays. Each of the 12 bothies is completely off-grid, powered entirely by renewable energy. The accommodation is ideal for adventure seekers, natural advocates and guests who share environmental awareness.

On Doors Open Days, visitors will be treated to a behind-the-scenes adventure at Cairngorm Bothies. Learn the sustainable journey and the human powered routes that are old and new of the area. Geocaching for families and family fun activities.

Tour Time: 1pm

Booking Link for Tour and Geocaching: www.ticketsource.co.uk/cairngorm-excursions

www.cairngormbothies.co.uk

 [CairngormBothies](https://www.facebook.com/CairngormBothies)

 [cairngormbothies](https://www.instagram.com/cairngormbothies)

 [cairngormlodge1](https://twitter.com/cairngormlodge1)



49 Chapel of Saint Lesmo

Glen Tanar, Aboyne, AB34 5EU



Opening Times:

Saturday 21st CLOSED

Sunday 22nd 11am - 3pm

Enjoy the quiet serenity of the Chapel, with its rustic charm and many original features still in existence including highland style ceiling rafters and decorative stained glass. Converted in the 19th century from a drovers' inn, many of the stained-glass windows have been recently renovated by local craftsmen.

On the day guided tours will be provided, relating the building to the history of Glen Tanar from the 18th century to the present.

Toilets and car parking are available at the Glen Tanar Visitor Centre, where visitors must park, from which a 10min walk will be required to access the site of the Chapel.

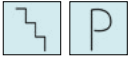
Tour times: 11am, 12noon, 1pm, 2pm, 3pm

www.glentannarcharitabletrust.org/chapel.htm



50 Finzean Bucket Mill

Finzean, AB31 6NE



Opening Times:

Saturday 21st 10.30am - 3.30pm

Sunday 22nd 10.30am - 3.30pm

(Pre-booked tours only)

The water powered Finzean Bucket Mill is a unique Grade A listed historic site not only locally but nationally. It was built by Peter Brown in the 1850's to make wooden buckets, or pails, using timber from the Forest of Birse.

The bucket mill demonstrates part of the deep connection of the community in Finzean to its industrial past in the Forest of Birse, felling trees as part of the community's inherited rights on the Commonty and working the sawmills and Bucket Mill.

The Bucket Mill has been operated by three generations of the Brown family. The current miller, Stan Moyes, took over the running of the mill in the 1970's. In 1999, Birse Community Trust became the owner of the mill and Stan Moyes continues in his stewardship role.

The Bucket Mill will not be operating during Doors Open Days, but the skills are very much alive in the miller Stan Moyes, who is semi-retired. He learned how to operate a water-powered mill from David Duncan at the Finzean Sawmill and Turning Mill, a mile east along the river Feugh.

Doors Open Days offers a rare opportunity to access the mill for a guided behind the scenes tour and view first hand all the wheels, belts, and water-powered machinery still in place to this day.

Tour times: 10.30am, 11.45am, 1pm

Booking required. Book online at:

www.ticketebo.co.uk/bct/doors-open-finzean-bucket-mill

www.birsecommunitytrust.org.uk

 [BirseCommunityTrust](https://www.facebook.com/BirseCommunityTrust)



51 Forgue Old Kirk

Church Terrace, Forgue, AB54 6BY



Opening Times:

Saturday 21st 10am - 4pm

Sunday 22nd 10am - 4pm

Joining the event for 2024 is Forgue Old Kirk, a category B listed property designed by the well-respected northeast architect Archibald Simpson. The building stands raised up on a hill overlooking the graveyard and site of the earlier St Margeret's Church, the dedication taking place prior to the 16th century Scottish Reformation. The Kirk was once the centre of the very large Parish of Forgue but is now a community building opened in 1997.

The medieval kirk was demolished in 1819 and rebuilt to the imposing rectangular design of Archibald Simpson and retains a fine presence with its massing and quality stonework. In addition, some fine interior detailing remains including 1819 painted plastered ceiling and remnants of acanthus design stencilling. In 1875 the interior was redecorated, and a new organ was installed. In 1926 the pews and the dais were renewed; the gallery was simplified, and the organ moved from its original central position to the southeast corner.

Today the Old Kirk continues to remain at the heart of the local community hosts events every month including three organ recitals and the Forgue community carol service.

Over the weekend guides will be on hand to show you round the church and its exhibition, there will also be organ music being played both days between 3pm-4pm.

www.friendsforguekirk.org.uk

 [FriendsofForgueKirk](https://www.facebook.com/FriendsofForgueKirk)

52 Leith Hall

Kennethmont, AB54 4NQ



Opening Times:

Saturday 21st 11am + 2pm

Sunday 22nd 11am + 2pm

(Pre-booked tours only)

Leith Hall was originally built as a traditional Scottish tower house. It has been added to by successive generations of the Leith-Hay family with the last additions being completed in 1906. It has been in the care of the National Trust for Scotland since 1945.

Leith Hall is offering a special architectural tour for Doors Open Days (booking required). The Doors Open Days Tour will complement the normal NTS guided tour, highlighting the architectural history of Leith Hall. The tour will focus on Leith Hall's transport links from the 18th century onwards, and how these affected the design and layout of the property, in connection to this year's European Heritage theme, 'Heritage of Routes, Networks and Connections'.

The Hall and tearoom are open as usual from 10.30am to 3.30pm.

Tour times: 11am and 2pm

Booking required. Book online at:

www.eventbrite.co.uk/e/leith-hall-doors-open-day-2024-tickets-959335306727

www.nts.org.uk/visit/places/leith-hall

 [LeithHallGardensEstate](https://www.facebook.com/LeithHallGardensEstate)



53 Number 30, The Square, Huntly

The Square, Huntly, AB54 8BR



Opening Times:

Saturday 21st 10am - 4pm

Sunday 22nd CLOSED

Number 30 is a unique, multipurpose venue situated in the heart of Huntly's picturesque town centre square. Opening in the summer of 2024 following an ambitious re-development project to transform a former department store into a venue which now has a cinema, café, retail and event space as well as co-working and hotdesking facilities, and a learning and training space. Number 30 also has a changing place and is a fully accessible building with a lift.

On Doors Open Day visitors will be offered tours of Number 30 with the story of how the building was transformed from a department store into a multipurpose venue, a fascinating opportunity not to be missed.

Tour times: 10am, 10.30am, 11am, 11.30am, 12pm, 12.30pm, 1pm, 1.30pm, 2pm, 2.30pm, 3pm, 3.30pm

To book, call 07380893121 or email hdt@huntly.net

www.number30.org

 [number30huntly](https://www.facebook.com/number30huntly)

 [number30huntly](https://www.instagram.com/number30huntly)



54 St Margaret's Church, Huntly

30 Chapel Street, Huntly, AB54 8BS



Opening Times:

Saturday 21st 10am - 4pm

Sunday 22nd 10am - 4pm

The Parishioners of St Margaret's Church invite you to visit this beautiful A-listed church. It was built in 1834 with the support of the influential Gordon family of Wardhouse and renovated in 1905. Located on a prominent corner site, its unusual Spanish Baroque tower and spire is presented to best advantage. The colourful interior gives a warm and uplifting welcome as your eyes will be drawn to the stencilling, large oil paintings, the intricate altar detail and magnificent ceiling.

This magnificent church was built in a Spanish style, highly unusual in northeast Scotland, due to the connections of the Gordon Family to Jerez in Spain, where some of the family had fled after Culloden. There the Gordon family established a successful Sherry business, which in part eventually helped fund the Church in Huntly. Come for a visit on Doors Open Days and hear more about the interesting history and links to Jerez-Gordon Sherry.

Refreshments will be available in the adjacent hall.

 [St-Margarets-RC-Church-Huntly](https://www.facebook.com/St-Margarets-RC-Church-Huntly)



55 The Bus Collection at Alford

Grampian Transport Museum, Montgarrie Road, Alford, AB33 8AE



Opening Times:

Saturday 21st 10am - 4pm

Sunday 22nd 10am - 4pm

The Bus Collection at Alford is the home to a fascinating fleet of vehicles that have spent their lives being used as public transport across the vast road networks of Aberdeen City and Shire. The collection is maintained by The Aberdeen & District Transport Preservation Trust, which was created in 2006 and as much as possible, vehicles in the Trust's care are returned to running condition and during events are presented to the public.

The collection aims to promote the education of the public by bringing together, holding, adequately housing, maintaining, preserving, and conserving a fleet of buses, coaches, trams and many other vehicles, along with any related equipment.

During the weekend visitors will receive a guided tour around the bus collection. Have your cameras at the ready as plenty of photo opportunities will exist as visitors will be permitted access to many of the vehicles on display. Weather permitting there will be an external display of vehicles with the possible of experiencing a "wee hurl" around the track, an adventure for all ages to enjoy!

The Bus Collection at Alford is a short walk to the left of the main entrance to the Grampian Transport Museum. It can also be accessed from the rear entrance to the site from Stewart Road.

<http://thebuscollectionatalford.co.uk>

 [thebuscollectionatalford](https://www.facebook.com/thebuscollectionatalford)

 [thebuscollectionatalford](https://www.instagram.com/thebuscollectionatalford)



56 The Victoria and Albert Halls, Ballater

Station Square, Ballater, AB35 5QB



Opening Times:

Saturday 21st 10am - 4pm
Sunday 22nd 10am - 4pm

The Albert Memorial Hall, a category C listed building, was officially opened on 29th September 1875 as a community meeting place for Ballater residents and incorporating on the ground floor an area for use as a Post Office. The hall was originally a very important civic building for the town of Ballater situated directly opposite Ballater station. Queen Victoria would alight here during her frequent visits to balmoral. The placing of the Halls in this location emphasised their civic importance.

The Albert Hall is on the first floor, today accessible by lift, and is used currently for various community activities. An area now designated as the Mike Sheridan Room, was added 20 years later as part of the Victoria Hall and Gordon Institute when the community needed greater space than was then available in the Albert Hall.

Visitors will be treated to an array of pictures, documents and artifacts located within the fine hall. A vast amount of local history for the inquisitive mind!

www.victoriaandalberthalls.co.uk

[VictoriaandAlbertHalls.Ballater](https://www.facebook.com/VictoriaandAlbertHalls.Ballater)

[va_halls_ballater](https://www.instagram.com/va_halls_ballater)



57 Walled Garden, Ballogie

Ballogie, Aboyne, AB34 5DT



Opening Times:

Saturday 21st CLOSED
Sunday 22nd 10am - 4pm

The Walled Garden at Ballogie is looked after by The Seed Box, a social enterprise charity, which provides horticultural training and outdoor therapy to adults with additional support needs. Gardening activities are carried out within the walled garden, supporting workers to develop employability skills, confidence, and independence.

The Walled Garden is located within the policies of Ballogie and is listed category B. The garden is double terraced with coursed granite rubble walls and a sundial located to the northern end which is listed category C. The garden is laid out with a 50m long herbaceous border, fruit trees and bushes, vegetable and cut flower beds.

A first for Doors Open Days, visitors can tour the garden and will have the opportunity to cut your own bunch of flowers, see all that is happening in the garden and take part in a children's activity.

www.theseedbox.org.uk

[theseedboxltd](https://www.facebook.com/theseedboxltd)

[seedboxorg](https://www.instagram.com/seedboxorg)



58 'Prehistory in the Garioch' at Monymusk Hall

Monymusk Hall, The Square, Monymusk, AB51 7HJ



Opening Times:

Saturday 21st 2pm - 4.30pm

Sunday 22nd CLOSED

Mid-Grampian Mesolithic's Doors Open event features an exhibition of our family friendly community archaeology group's exploration of local evidence for early prehistory in the Mid-Don valley. There will be an exhibition about life here approximately 10,000 years ago, along with the evidence we have found for it. There is a hands-on Mesolithic map game and Playmobil landscape for children to build and explore. There will also be a slideshow of photographs and afternoon teas available.

Mid-Grampian Mesolithic is a group of volunteers looking for evidence of how ancient people used the landscape and moved around it. Evidence of stone tools from local sites and elsewhere in Britain and Doggerland, the now submerged area of the North Sea, provide a greater understanding of the 'connectedness' of what was likely quite a small population of hunter-gatherers venturing northwards as the last ice sheet retreated.

Monymusk Church will also be open for self-guided leaflet tours. Items of interest include a Class 2 Pictish Stone with a sanctuary symbol, one of only 6 in Scotland, two 7th century grave markers, a joug for punishment by the local court, and an early reformation bible. There will also be a display of historic Monymusk Estate Maps from the local area. The church's roots lie in a nearby site mentioned in the Book of Ulster as being in use from 623AD. The 1929 restoration by A. Marshall Mackenzie includes the very beautiful stained-glass window recording the early church history by Alexander Strachan, the lesser known brother of William Strachan of Aberdeen.

The neighbouring Monymusk Village Hall has a carpark and large well equipped children's playground. Monymusk village square is a rare example of a planned estate village, with interesting and distinctive architecture. A free leaflet is available for a self-guided local walk looking at the local history around Monymusk (duration 45 minutes to 1 hour, sensible shoes required, unfortunately not wheelchair friendly).

www.midgrampianmesolithic.org

www.facebook.com/groups/598503318530217



Further Information & Updates

Every effort has been made to ensure the information in this leaflet is correct at time of print. For up-to-date information on our venue listings and for any changes to the programme, updates, amendments and additions, please look at the national website and on our Facebook page at the addresses below:

www.doorsopendays.org.uk

www.aberdeenshire.gov.uk/doorsopendays

 <https://www.facebook.com/AberdeenshireArchitectureHeritageDesign>

If you would like any further information about the event or have any queries, please email the Aberdeenshire event coordinators at: doorsopen@aberdeenshire.gov.uk

Please note that visitors entering buildings do so at their own risk. Children must be accompanied. None of the participating buildings or organisations are responsible for any accidents or damage that might be incurred. The owners/custodians of the buildings retain the right to refuse access.

Share your experience of Doors Open Days Aberdeenshire

We would love to hear from you about the event, the buildings you visited and your feedback. Please send us your photos of your favourite buildings and share your experiences of the day by posting them to our Facebook site.

 <https://www.facebook.com/AberdeenshireArchitectureHeritageDesign/>

Doors Open Day 2025 and beyond

If you are involved with a property that you think would make a good addition to Doors Open Days in the future, please get in touch. We look forward to hearing from you!

Clare Tierney, Aberdeenshire Doors Open Days Coordinator

With so many buildings to visit across Aberdeenshire
on Doors Open weekend, there's something for
everyone – what better excuse to explore the region!

www.doorsopendays.org.uk

DOORS
OPEN
DAYS

