

Lynda Blackadder Inshore Fisheries Advisor

marine scotland
science



lynda.blackadder@scotland.gsi.gov.uk



Coastal and Offshore Fisheries Network

Fisheries Assessment and Advice Programme

- Stock Assessment and Modelling Group
- Fisheries Advice Group

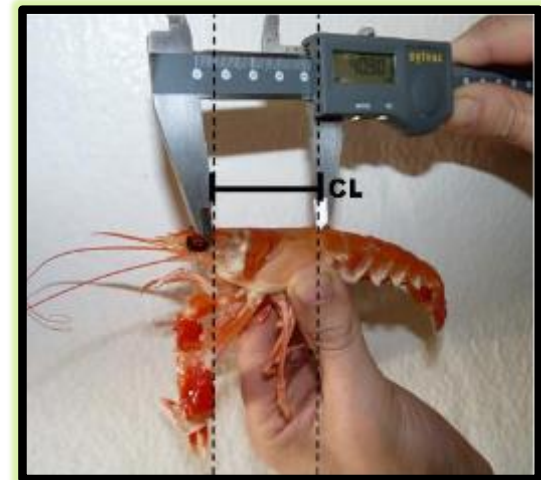
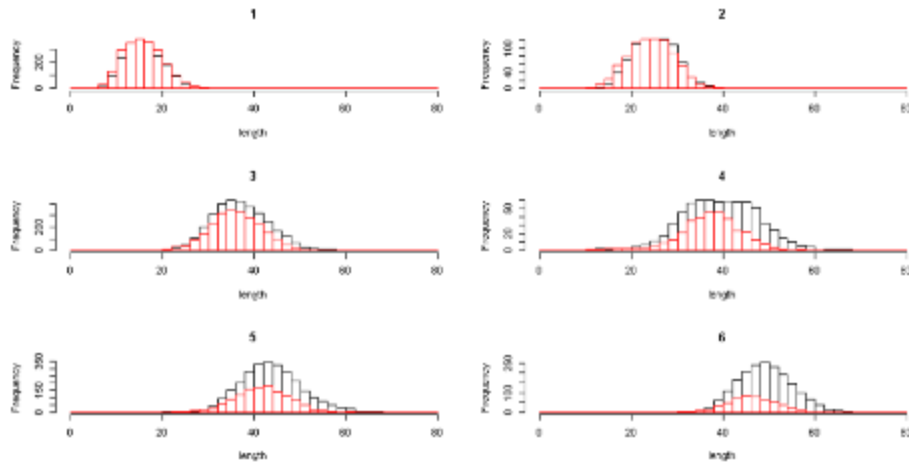
Fisheries Data Programme

- Fisheries Statistics Group
- Data Collection Group
- Fishing Technology Group



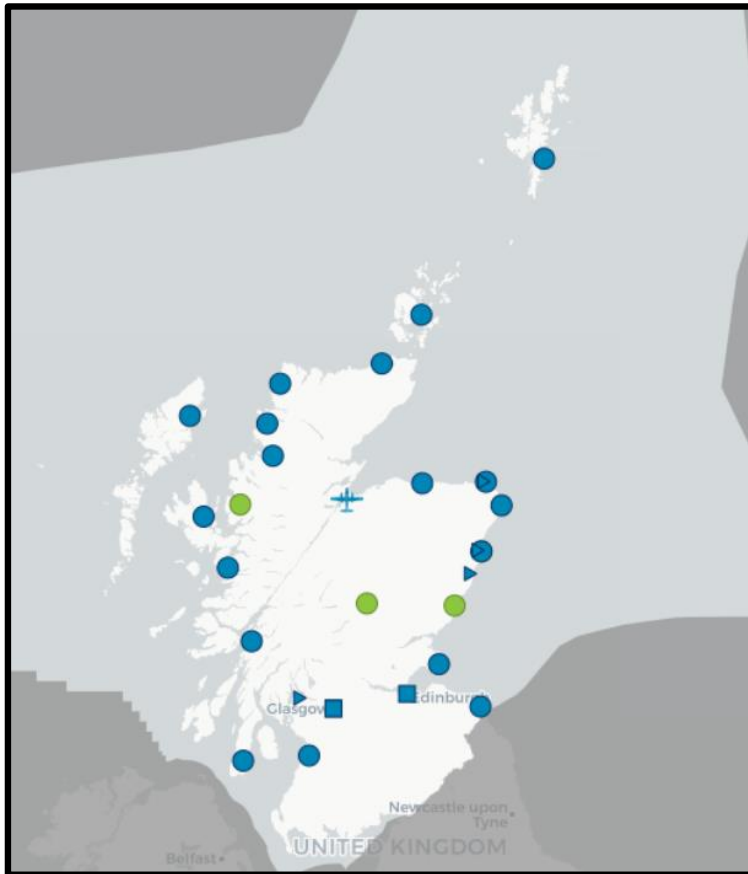
Provide scientific support and advice on inshore fisheries management to policy colleagues in the Scottish Government, to the Scottish Regional Inshore Fisheries Groups (RIFGs) and other marine stakeholders.

Fisheries Data Programme

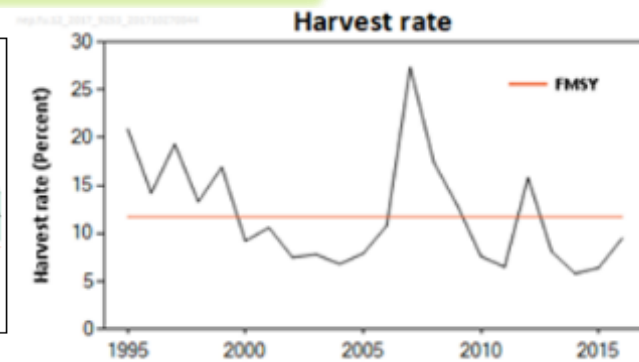
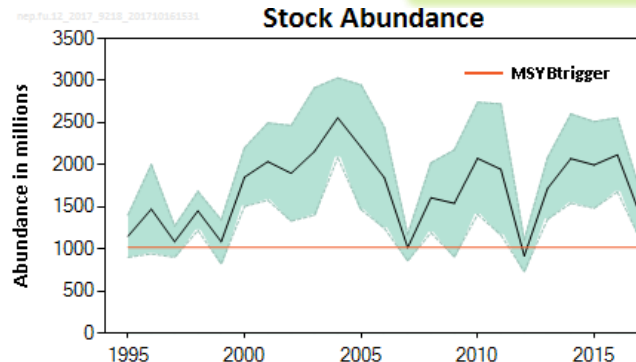
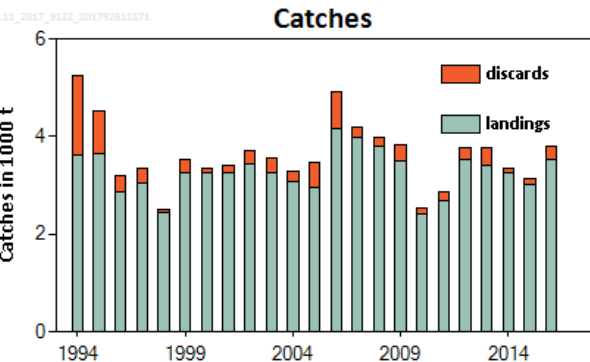


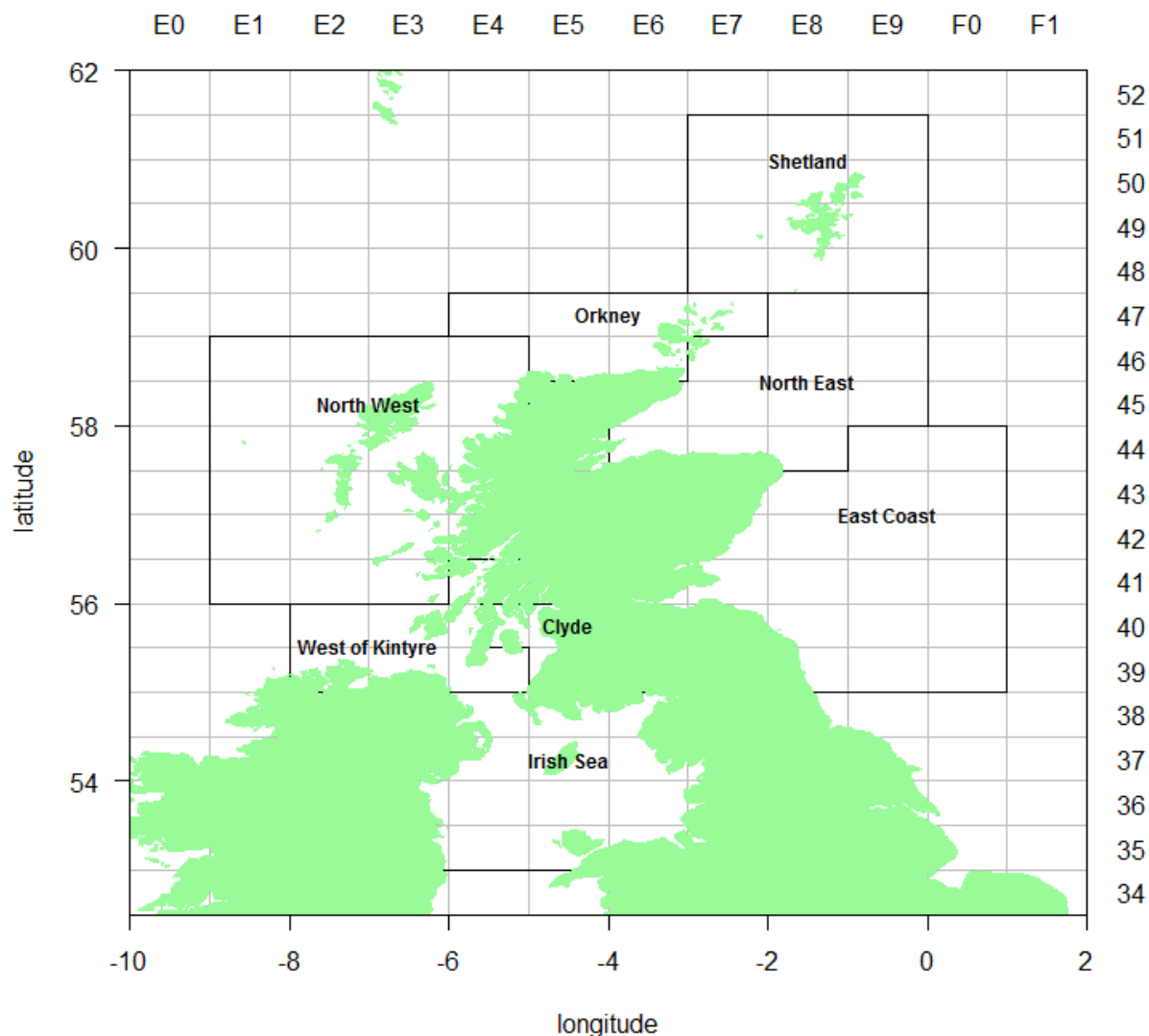


- Three annual TV surveys for *Nephrops*
- Three annual dredge surveys for scallops
- Monthly port sampling at all ports in Scotland
- No dedicated surveys for crab and lobster
- No observer programmes which cover scallop dredge or creel vessels



Fisheries Assessment and Advice Programme



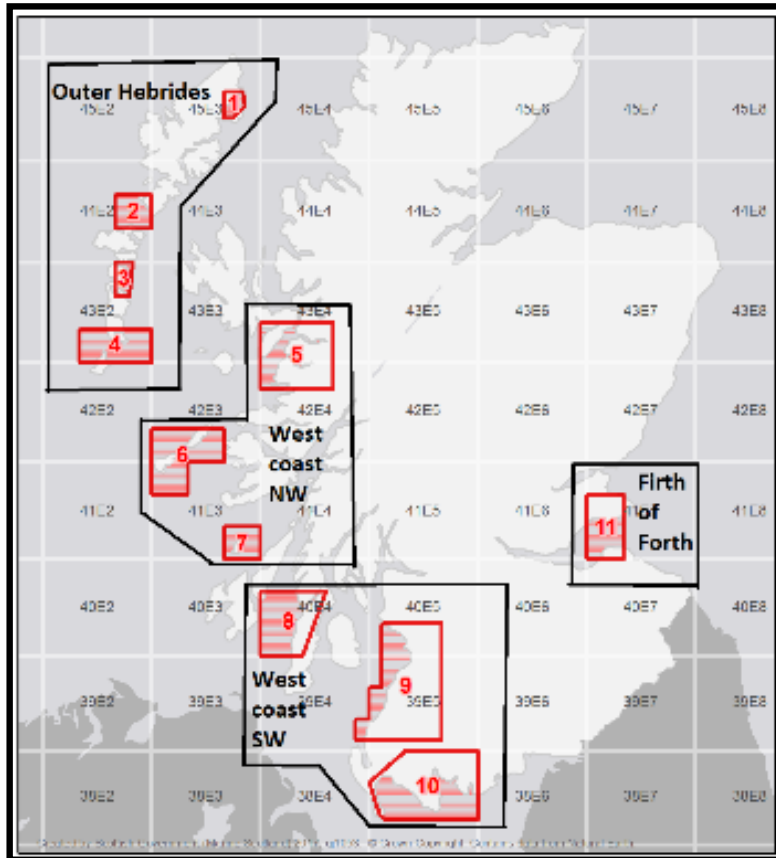


Stock assessment areas for king scallops. Note only five areas are assessed by analytical assessments.



Razor clam trial

- Started in 2018
- 28 vessels
- MSS will report this year



Biological information

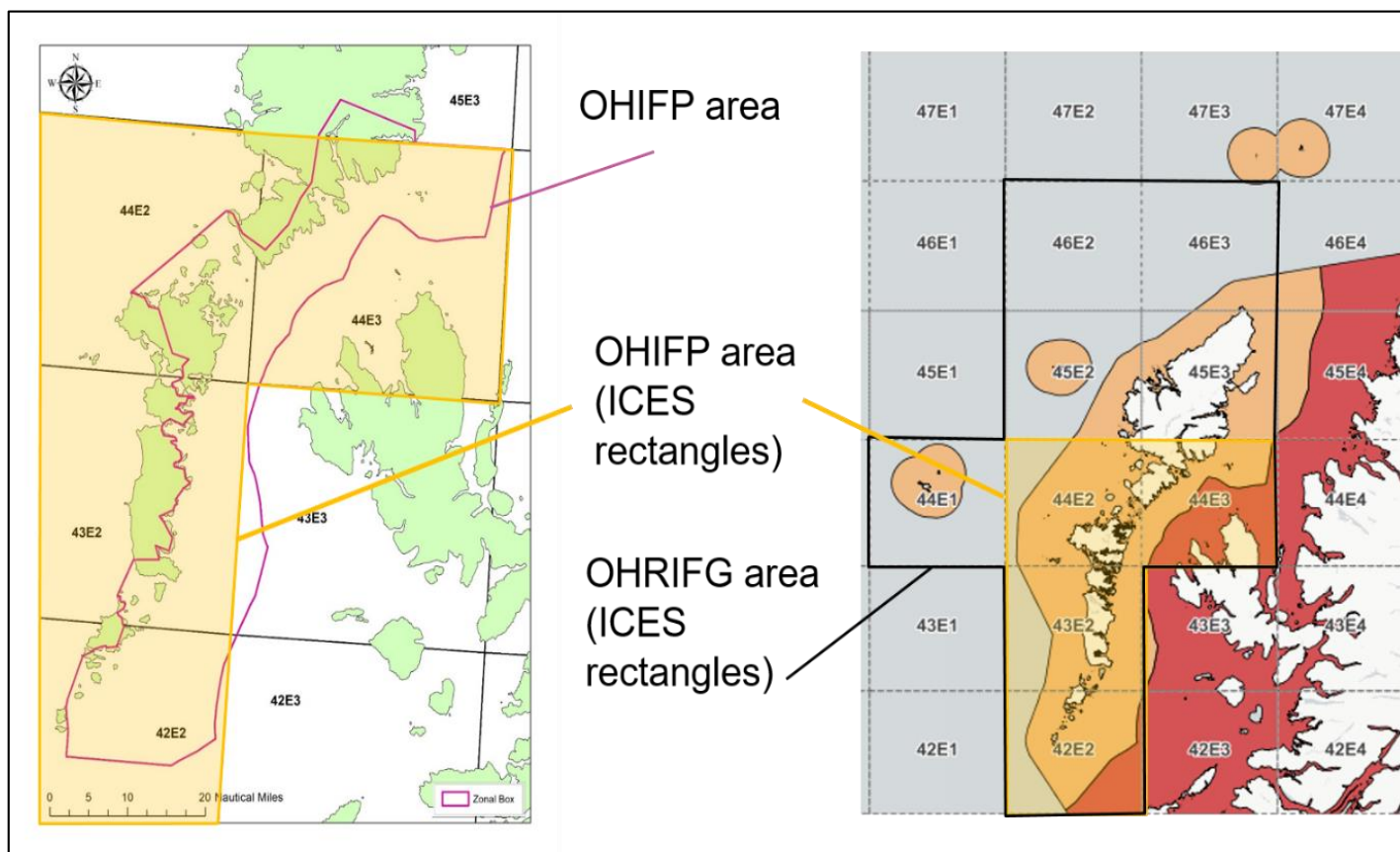
- Live samples
- Self sampling
- Surveys
- PhD projects

Fisheries data

- Remote electronic monitoring
- Landings and effort
- Spatial analysis
- Fishery footprint

Outer Hebrides Inshore Fisheries Pilot (OHIFP)

- MSS provide scientific support for the OHIFP
- As a first step, the 'baseline' fisheries data have been investigated, including landings and effort data for the years 2017 - 2021
- Report will be available this year



Seal Deterrent Project

- Collaboration between fisher's, NECRIFG, MSS, MS, academics and private sector
- Targeted acoustic startle technology (TAST)



- Achieved primary objective of keeping seals away from the vessel.
- No effect on fish shoals
- Increased fishing stop duration.
- Indication of higher catch weight per stop but not clear (needs more data)



ICES WGSCALLOP – Scallop Assessment Working Group



Members of the Scallop Assessment Working Group (WGScallop) discuss the key issues surrounding scallop species and are working towards the improvement and further development of appropriate stock assessment methods.

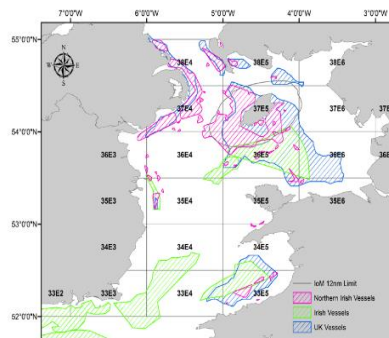
Table 7.13.2: Species list and respective FAO codes.

Common name	Scientific name	FAO code
Great Atlantic scallop (King scallop)	<i>Pecten maximus</i>	SCE
Queen scallop	<i>Aequipecten opercularis</i>	QSC
Iceland scallop	<i>Chlamys islandica</i>	ISC
American sea scallop	<i>Placopecten magellanicus</i>	SCA
Scallops nei	<i>Pectinidae</i>	SCX

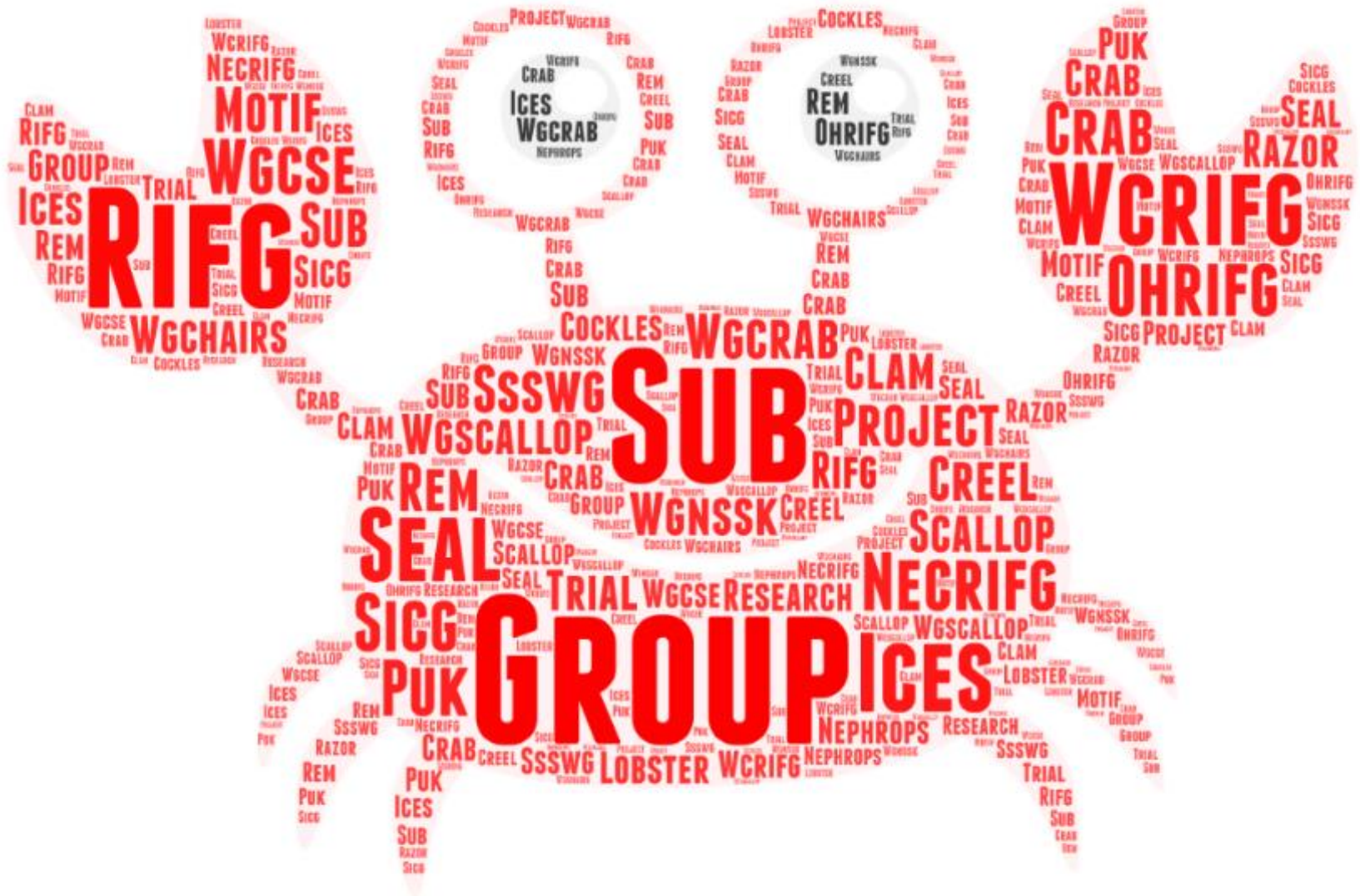
Data types

Table 7.13.3: Aggregation levels by data type.

Type of data	Temporal aggregation level	Metier level 5	Geographical Reporting level
Landings Quantity	Monthly	see table 7.13.5	ICES Statistical Rectangle
Effort	Monthly	see table 7.13.5	ICES Statistical Rectangle



Meetings



Thank you

Questions?

Lynda Blackadder

lynda.blackadder@scotland.gsi.gov.uk

Photographs used with permissions (and thanks!)
to Clive Fox, David Leadbetter, Carlos Mequita,
David Whyte, Thomas Gotz, Gerry McAlister and
Ade Weetman