

**Statutory Consultation
Secondary Catchment Anomaly Rezoning at Lumphanan
Online Survey Summary Report
5 September 2023 – 3 November 2023**

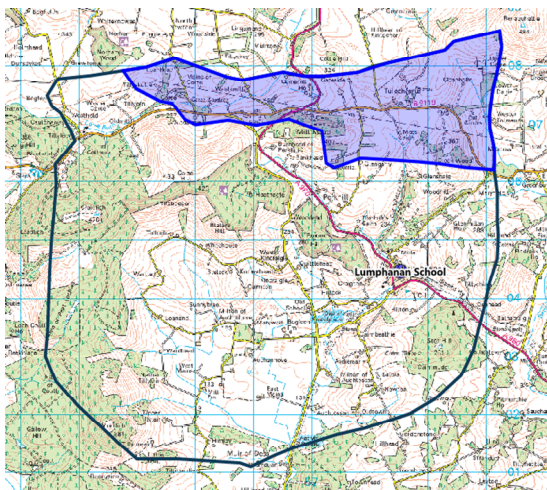
Introduction

The statutory consultation on the secondary catchment anomaly rezoning at Lumphanan ran between 5 September and 3 November 2023. During the consultation period parents/carers, community members and stakeholders were invited to participate in an online survey to express their opinion on the proposal.

The survey provided a summary of the proposal with associated maps and was open for all stakeholders to complete for the duration of the consultation period. The proposal is to rezone Aboyne Academy catchment to include the area in the Lumphanan School catchment currently zoned to Alford Academy.

Map 1 below shows the catchment area for Lumphanan School, with the anomaly area (highlighted in blue) is currently zoned to Alford Academy.

Map 1 – Lumphanan School catchment area



A letter containing the link to the survey was sent to the following;

- Parent Councils of Aboyne Academy, Alford Academy and Lumphanan School
- Parent/Carers of pupils attending Aboyne Academy, Alford Academy and zoned to Lumphanan School.
- Pupils and Staff at Aboyne Academy, Alford Academy, Lumphanan School
- Trade union representatives of staff at Aboyne Academy, Alford Academy and Lumphanan School
- Lumphanan, Torphins, Donside and Cromar Community Councils
- Residents residing within the anomaly area of the Lumphanan School catchment area

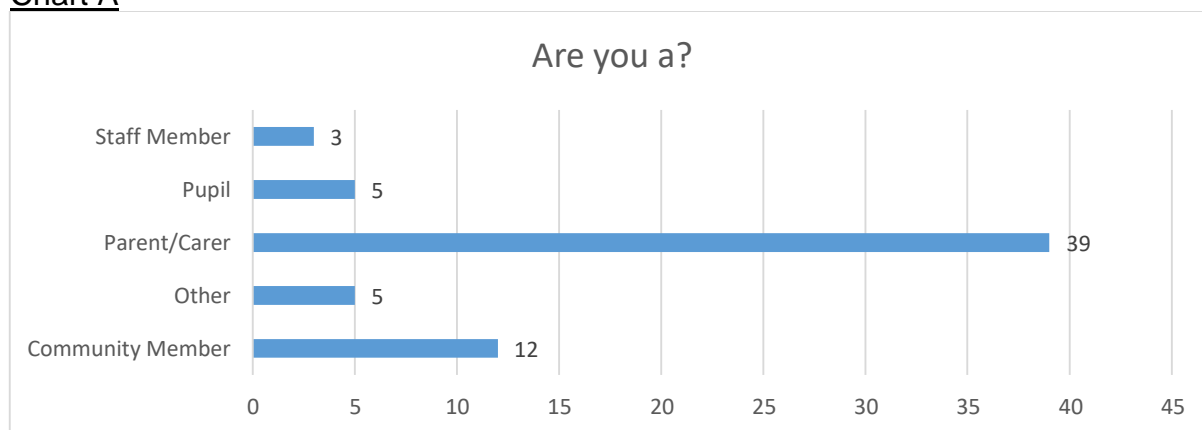
The survey was also available on the Aberdeenshire Council website and the Learning estates contact details were given if a paper copy of the survey was required.

A total of 64 participants completed the survey, the responses have been analysed and are summarised below.

Q. Are you a?

Chart A below shows that the majority of participants are parents/carers with 39 (60.9%) selecting this option, 12 (18.8%) are community members, five (7.8%) are pupils, five (7.8%) selected Other and there were three (4.7%) staff members.

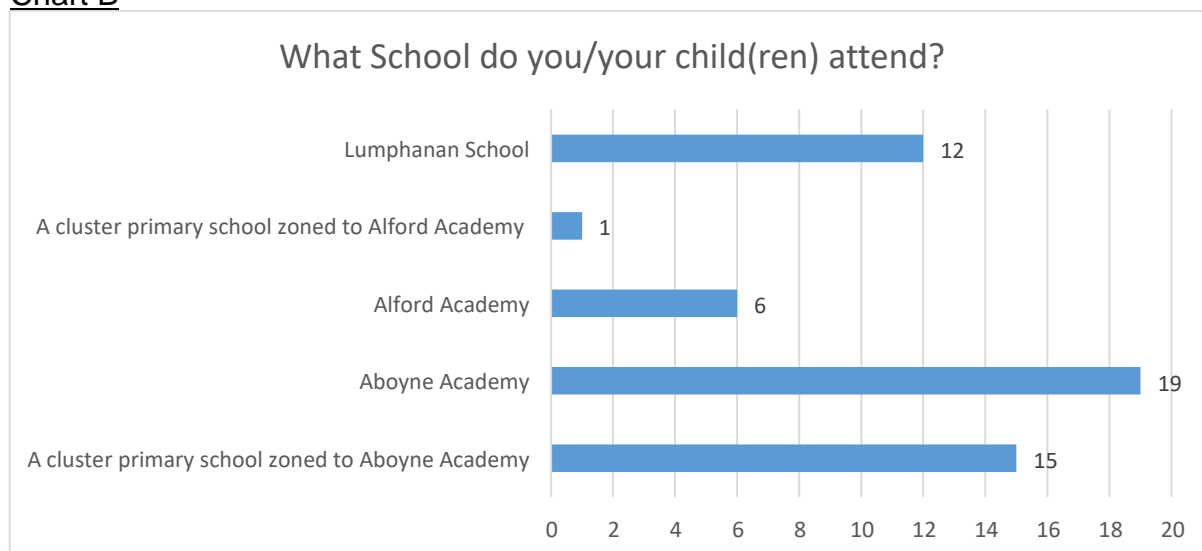
Chart A



Q. What school does your child(ren) attend?

Participants who selected they were either a Parent/Carer, Pupil or Staff were asked what school they or their child(ren) attend. There were 47 participants who responded with some selecting more than one option. Chart B below shows that the majority, 19 (35.8%) indicated they attend Aboyne Academy, 15 (28.3%) attend a primary school within the Aboyne Academy cluster, 12 (22.6%) attend Lumphanan School, six (11.3%) attend Alford Academy and one (2%) attend a primary school within the Alford Academy cluster. All pupils who took part in the survey either attend Aboyne or Alford Academy.

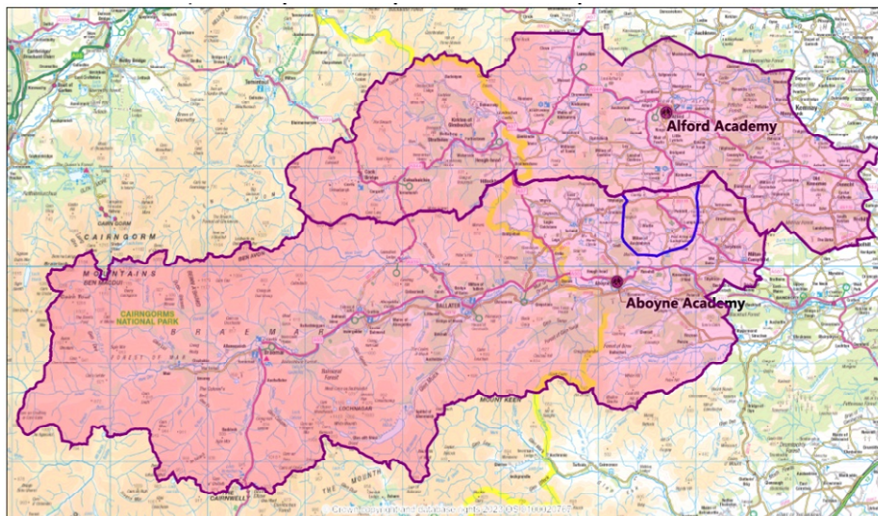
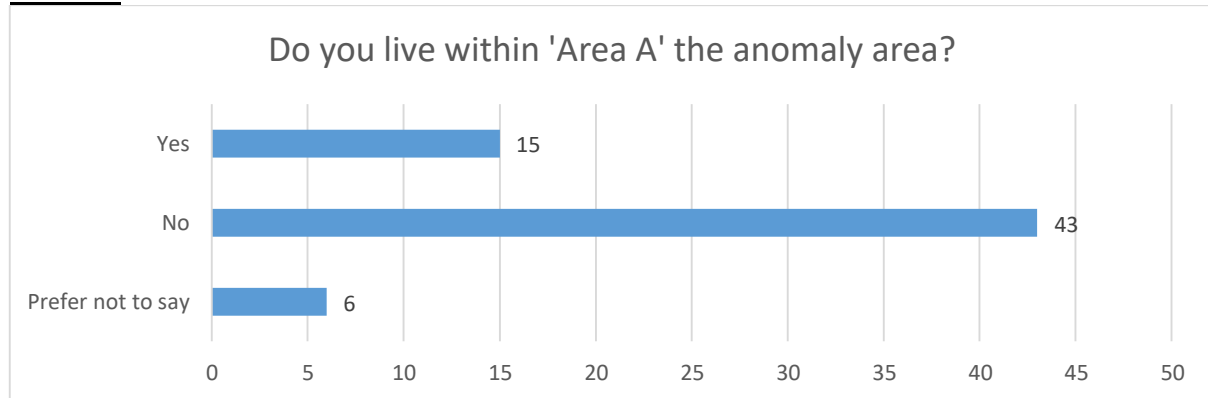
Chart B



Q. Do you live within the anomaly area?

Chart C below shows that there were 15 (23.4%) participants who reside within the anomaly area who took part in the survey, this was a variety of stakeholders; community members, parents/carers, pupils and staff members. There were 43 (67.2%) participants who stated they do not live in the anomaly area and six (9.4%) which stated they preferred not to say.

Chart C



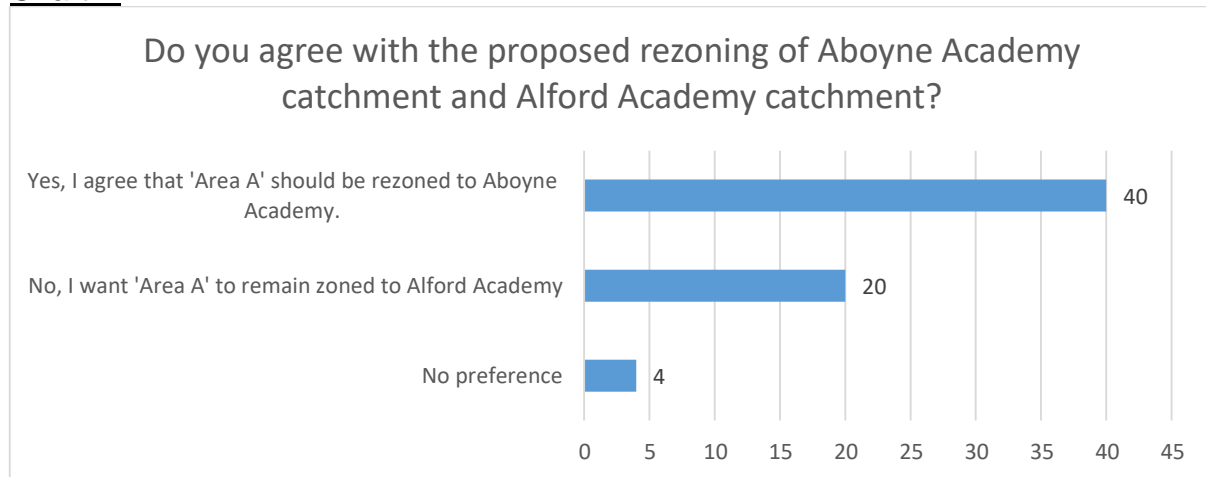
Q. The map above shows the proposed catchment area for Aboyne Academy including Area A within its catchment and Alford Academy catchment area removing the Area A. The blue line is the catchment area for Lumphanan showing all of its catchment within the catchment area for Aboyne Academy. Do you agree with the proposed rezoning of Aboyne Academy catchment and Alford Academy catchment?

Chart D below shows that the majority, 40 (62.4%) participants agree that the anomaly area should be rezoned to Aboyne Academy. There were 20 (31.3%) participants who want Area A to remain zoned to Alford Academy and four (6.3%) participants who had no preference. The participants who agreed to the anomaly being rezoned were from a variety stakeholders and the majority of stakeholders were parent/carers.

Of the 15 participants who live within the anomaly area, the majority, 10 (66.6%) participants agreed that the anomaly area should be rezoned to Aboyne Academy with

the others stating no, they would prefer for the anomaly area to remain zoned to Alford Academy and no preference.

Chart D



Views and Comments

Participants were asked to give their views and comments. A total of 36 comments were received from a variety of stakeholders, seven of which live within the anomaly area these are listed below:

- My concern would be how much uplift in funding and staffing Aboyne academy would get to accommodate extra pupils. I also wonder how close to physical capacity Aboyne academy is.
- Will allow pupils to attend secondary school with the pupils they went to primary school with.
- Aboyne academy is bursting at the seams and hugely needs refurbishing as it is.
- Roads are hazardous in the winter, it makes sense to stay on the lower lying route and bus route.
- As primary they go to Lumphanan so should continue to the main academy for that primary.
- Too many kids in Aboyne Academy as it is.
- My son has settled into school life very well at Lumphanan primary and I don't want him to feel scared, worried about starting a new school not knowing anyone and being removed from his friends that he would have spent his last 7 years with. This would involve a huge change for him and would affect him socially and mentally. It would be a huge setback for him starting secondary, having to make friends all over again who would already have their own friend groups and he would feel like an outsider as he is quite a shy little boy. It just doesn't make sense that we live in the Lumphanan catchment area and have built up strong friendships but for all that to be ruined because of where we live. I am 100% in favour for Aboyne being our catchment school for secondary school.
- These students will be totally alienated and separated from the school peers.
- The children in the zone who attend Lumphanan should be able to go to secondary with their current classmates.
- It ensures that all those Lumphanan primary school children do not lose their social groups by going to separate secondary schools.

- I agree with the proposal and think it is much better for children in area A to follow peers at Lumphanan primary to Aboyne for secondary education.
- We are a small local Community education charity and we run the coding club effort at Aboyne. The school is already substantially overcrowded and recently I gather it also has RAAC issues. The overcrowding is amazingly bad. We have tried running in the school computer room, but that is badly designed for teaching and also often in use right up to when we want to use it, leaving us with little time for setting up. We have moved to the library where there is an upper room, but that is used every day as overspill space for the youngsters to study in, and also there is no proper wheelchair access to it. The librarian has been most helpful and allowed us to use part of the library but that requires her and the janitors relaying it out. The problems of space are obvious. When we assisted the consultants hired by the Council to do a couple of morning coding workshops for the Council, they had to share with another class the only place they could find for the first session. Then they had to move to a totally different room for the other sessions. It cannot make sense to increase their overcrowding.
- Aboyne is our local village. For the shops, doctors and likes.
- Lumphanan is a feeder school for Aboyne and area a is Lumphanan catchment. Makes perfect sense. Also kids with their peers etc.
- Closer, plus it's Deeside, not Donside. Alford Academy is so full only getting worse due to the continued development of houses.
- Aboyne Academy has too many pupils and a very large catchment area already. The school is struggling to perform well. A larger catchment area will make the school perform worse.
- I feel that the zone should be rezoned to Aboyne academy as my child will have made relationships with peers to then be put to a different academy which is a huge change from primary and to go from having a close group of friends to knowing no one.
- Ongoing development in Aboyne will bring more children to an already overcrowded school.
- It is cruel to force children within this zone to go to a different school to their peers. It also doesn't make financial sense to divert Alford buses when Aboyne buses are already passing this stretch of road.
- The Aboyne Academy is nearing capacity with increased homes been built in the area already and I presume it is the same as the Alford catchment area.
- Children shouldn't be separated from their peers, currently there is no good reason for them to be separated and the boundary therefor is prohibitive to children's well-being.
- If area A is currently zoned for Alford Academy perhaps it would be better to look at the primary school catchment area i.e. rezone Area A to the appropriate Alford Academy feeder primary school.
- We believe this would reduce stress on Alford academy's pupil roll and allow for more space in classrooms.
- I have no views and/or comments
- "1. Do you think that changing the catchment area to include all of the Lumphanan school zone into the Aboyne Academy catchment is a good idea? (yes, no and reason) Yes, because we have enough pupils, any more would be overkill.
2. Is there anything about this change that worries you? We could run out of classroom space if they remain at Alford academy.
3. Is there anything about this change that interests or excites you? No"

- Alford Academy is already oversubscribed so if Aboyne has the capacity it should be used.
- Aboyne Academy is already overcrowded and in desperate need of expansion and modernisation.
- It makes more sense for all the children zoned to a primary school to attend the same zoned academy.
- Aboyne Academy is overcrowded as it is and Alford Academy has been updated with funds. Aboyne Academy has not. When you make the Aboyne Academy bigger then and only then should rezoning should be considered.
- Aboyne Academy is already crowded enough. Alford got a brand-new building to be able to deal with an increase of numbers.
- It seems fairer for Lumphanan primary pupils to move to academy with their primary school peer group rather than making the change to Alford at what can be a challenging time.
- Since Aboyne primary/secondary have been assigned as 'hub schools' for most of Aberdeenshire, it has had absolutely none of the funding put into it in the same way Alford Academy has. As a result, the primary school is struggling with increasing numbers, especially the number of pupils with behavioural or additional need, as they have none of the funding into the building or staffing to cope well with it. This pressure is then placed onto the academy as pupils transition onto secondary. To take a zone away from Alford Academy which has had a whole new fit for purpose campus built and is far better equipped and staffed and place another zone onto Aboyne who lack the funding and struggle with the level of need required from pupils and general numbers, is in my opinion a terrible idea which will negatively impact Aboyne Academy.
- Children should go to Aboyne because it is much easier to get to especially in winter. Much safer.
- It is very distressing to pupils, who have gone through primary school with a group of peers and friends, to not be able to then transition to the same academy.
- Aboyne Academy does not have the capacity to take more students. Alford has a brand-new campus that more pupils deserve to make use of.
- Aboyne Academy is already too small for the amount of children within the catchment area.

There was also a section to gather the views and comments of children within the household. There were 11 comments received, five of which live within the anomaly area. The comments can be seen below:

- As a pupil in the Academy, there is not enough space, teaching staff or facilities to cover the amount of students in the school currently. Adding many more students would send the school into disrepair and make the jobs of teachers, support carers and all staff much harder than it currently is.
- Please leave it as it is and don't change it.
- I spoke to him and he instantly had a worried look and said " I would be so sad as I wouldn't be with my friends. Don't make me go to a different school from my friends please "
- (Name of child redacted) is very happy she went to school with kids from the same primary and was worried she couldn't from Alford.

- (Name of child redacted) would like to be able to catch the school bus to the Academy with other pupils and for Corse to become part of the Aboyne Academy catchment area.
- Happy that they will move to academy with their peers and friends under the new proposals.
- There are too many people. It's so crowded and noisy. Teachers don't have time to help us.
- Aboyne Academy doesn't need a larger catchment area.
- I have no views and/or comments.
- My daughter does not think more children should be added to an already overcrowded school.
- It would be good to have more local friends come to the Academy.

Conclusion

In summary, the majority of participants agree that the anomaly area should be rezoned to Aboyne Academy. More than half of the comments were in favour of the proposal stating that it has social and mental health benefits for pupils to attend the same academy as their primary school peers. Others commented on the capacity, funding and staffing of Aboyne Academy as well as the capacity of Alford Academy.

Of the 15 participants who took part in the survey from the anomaly area, the majority agree to rezone the area to Aboyne Academy. In the comment sections, nine chose to leave their views, seven of which were positive comments towards the proposal.

Learning Estates Team
December 2023